

Wireless Mobile Utility (iOS) User's Manual

Install the Wireless Mobile Utility on your iOS device (iPhone, iPad, or iPod touch) to download pictures from a camera or take pictures remotely.

The Wireless Mobile Utility supports the following cameras. See the section for your camera for more information on using the Wireless Mobile Utility.

A *D750, D610, D600, D7200, D7100, D5500, D5300, D5200, D3300, Df*

 [2-27](#)

B *D3200, COOLPIX A*

 [28-52](#)

C *Nikon 1 Cameras*

 [53-75](#)

D *Other COOLPIX Cameras **

 [76-103](#)

* Available only with models that feature built-in Wi-Fi or support the optional wireless mobile adapter. For information on supported COOLPIX cameras with built-in Wi-Fi, visit:

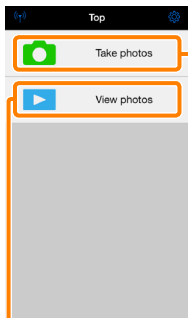
<https://itunes.apple.com/en/app/wireless-mobile-utility/id554157010>

D750, D610, D600, D7200, D7100, D5500, D5300, D5200, D3300, Df

This section describes the options available when the Wireless Mobile Utility is used to connect to D750, D610, D600, D7200, D7100, D5500, D5300, D5200, D3300, and Df cameras.

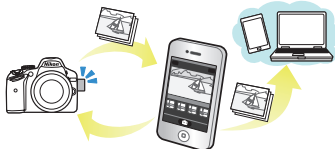
Features

Use the Wireless Mobile Utility to:



Take pictures remotely (📖 10): Tap the shutter icon in the Wireless Mobile Utility to take pictures and download them to the iOS device.

Download pictures as they are taken (📖 13): Take pictures with the camera and save them to the iOS device.



View pictures (📖 15): View the pictures stored on the iOS device or the camera memory card.

Download pictures (📖 18): Download existing pictures from the camera memory card.

Share pictures (📖 23): Share pictures via e-mail or upload pictures to photo-sharing sites.

For information on establishing a connection, see page [4](#).

Notices

- No part of this manual may be reproduced, transmitted, transcribed, stored in a retrieval system, or translated into any language in any form without Nikon's prior written permission.
- Nikon reserves the right to change the specifications of the hardware and software described in this manual at any time and without prior notice. Nikon will not be held liable for damages that may result from any mistakes that this manual may contain.

System Requirements

Before installing the Wireless Mobile Utility, confirm that your iOS device meets the following system requirements:

OS	iOS 8.4 or later
Wireless LAN	11b/g/n

Using This Application for the First Time

Read the terms of use ( [27](#)) before connecting.

Wi-Fi Security

Password protection and other Wi-Fi security features are not automatically enabled. Be sure to enable Wi-Fi security on the iOS device after connecting for the first time.

The Wireless Mobile Adapter

While the adapter is inserted, the camera exposure meters will not turn off; monitor the camera battery level to ensure that the camera does not power off unexpectedly. In addition, some camera menu items may be grayed out and unavailable and the camera can not be used for playback or live view. Movie recording can not be used.

Installing the App

- 1 Locate the app on the App Store.**

Connect to the App Store on the iOS device and search for “Wireless Mobile Utility”.
- 2 Install the app.**

Install the Wireless Mobile Utility.

Establishing a Wireless Connection

The following applies only to cameras without built-in Wi-Fi. For information on cameras with built-in Wi-Fi, see the manual provided with the camera.

- 1 Connect the wireless mobile adapter.**

Attach the wireless mobile adapter to the camera and turn the camera on. See the manual supplied with the wireless mobile adapter for details.
- 2 Enable Wi-Fi on the iOS device.**



If Wi-Fi is off, turn it on.
- 3 Select the appropriate SSID.**

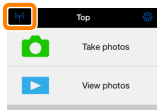
The default SSID begins with “Nikon”. iOS-compliant devices can not be connected using WPS.
- 4 Launch the Wireless Mobile Utility.**

After selecting **On** for **Privacy > Photos > WMU**, launch the Wireless Mobile Utility. When a connection is established, the LED on the wireless mobile adapter will glow green and the main dialog for the Wireless Mobile Utility will be displayed on the iOS device. For information on enabling wireless security, see page [6](#). For information on taking pictures, see page [10](#). For information on viewing pictures, see page [15](#).

Connection Status

Connection status is shown by an icon in the home display:

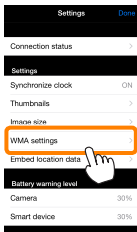
- : Connection established.
- : No connection. Tap the icon to open the iOS device settings menu and check Wi-Fi settings.



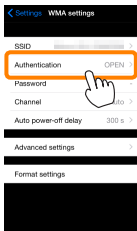
Wi-Fi Security

Wi-Fi security will not be enabled the first time you connect. Security can be enabled by opening the Wireless Mobile Utility settings menu (📖 [25](#)) and following the steps below.

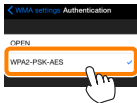
1 Tap WMA settings.



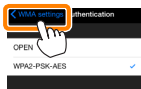
2 Tap Authentication.



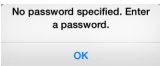
3 Select WPA2-PSK-AES. Tap WPA2-PSK-AES.



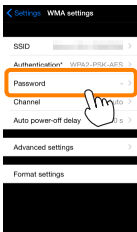
Tap **WMA settings** to return to the WMA settings menu.



If you are prompted to enter a password, tap **OK**.



4 Tap Password.



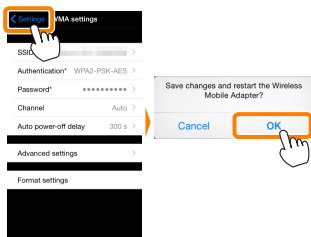
5 Enter a password.

Enter a password and tap **WMA settings** (📖 26). Passwords may be from 8 to 63 characters long.



6 Enable wireless security.

Tap **Settings**. A confirmation dialog will be displayed; tap **OK**.



The iOS device may prompt you for this password the next time you connect to the camera via Wi-Fi.

☑ Security

Although one of the benefits of a wireless-enabled device is that it allows others to freely connect for the wireless exchange of data anywhere within its range, the following may occur if security is not enabled:

- **Data theft:** Malicious third-parties may intercept wireless transmissions to steal user IDs, passwords, and other personal information.
- **Unauthorized access:** Unauthorized users may gain access to the network and alter data or perform other malicious actions. Note that due to the design of wireless networks, specialized attacks may allow unauthorized access even when security is enabled.

Taking Photos

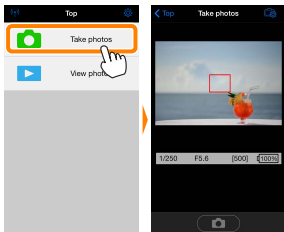
Take pictures remotely from the iOS device, or take pictures with the camera and save them to the iOS device.

Remote Photography

Follow the steps below to take photos from the iOS device.

1 Tap **Take photos**.

The camera viewfinder will go dark and the iOS device will display the view through the camera lens.

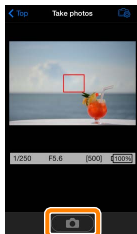


2 Focus.

In normal- and wide-area AF AF-area modes, tap the subject in the display to focus (if subject-tracking AF is selected, the camera will focus using wide-area AF).

3 Tap the shutter icon.

The shutter will be released after you remove your finger from the icon; the resulting photo is first saved to the camera memory card and then downloaded to the iOS device. There is no need to point the iOS device at the camera.



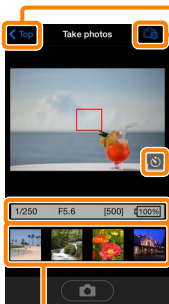
Remote Photography

Remote photography ends automatically when the battery in the camera or iOS device runs low. Note that using remote photography for an extended period may cause the camera's internal temperature to rise; if necessary, remote photography will end automatically to minimize damage to camera circuits.


The iOS device can not be used to adjust camera settings; use camera controls to adjust settings before starting Step 1. Regardless of the release mode selected with the camera, only one picture will be taken each time you tap the shutter icon. Note that the display may not update smoothly depending on the device and network conditions, and that panoramas can not be recorded using the easy panorama feature for the D3300.

A shutter speed of "Time" is available in mode **M**. Choose a shutter speed of **bulb** on the camera and select **Shoot > WMU** on the iOS device (page [12](#)), then tap the shutter icon to open the shutter. Shooting ends when the icon is tapped again. Note that the iOS device will not display the view through the camera lens at a shutter speed of "Bulb", and that the iOS device can not be used in shooting mode when "Time" is selected.

The Remote Photography Display



Top: Return to the top display.

: Display the following photography-related options.

- **Shoot:** Choose whether to take pictures using the iOS device (**WMU**) or the camera (**Camera**).
- **Live view:** Turn the live view display on or off.
- **Download after shooting:** Choose whether pictures are automatically downloaded to the iOS device. Available only when **WMU** is selected for **Shoot**.
- **Self-timer:** If **On** is selected, the camera shutter will be released 2 s after you tap the shutter icon. The timer turns off automatically after the shutter is released.

Self-timer icon: Displayed when the self-timer is on.

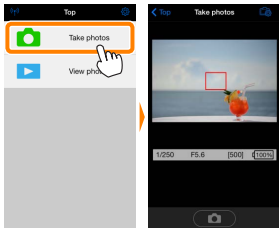
Camera settings: Shutter speed, aperture, etc. Not displayed when device is in landscape orientation.

Thumbnail area: Downloaded pictures.

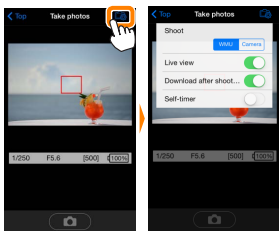
Downloading Photos as They Are Taken

Take photos with the camera and save them to the iOS device.

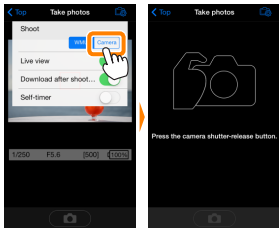
1 Tap Take photos.



2 Tap .

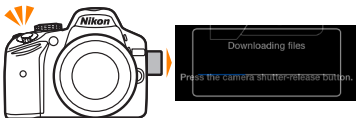


3 Tap Camera.



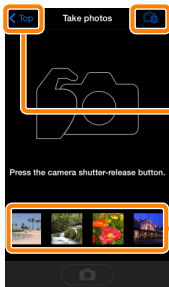
4 Take photos.


Frame photos in the camera viewfinder and shoot. Photos are downloaded to the iOS device after being saved to the camera memory card.



The Photo Capture Display

The photo capture display is shown below.



: Display **Shoot** options and choose whether to take pictures using the iOS device (**WMU**) or the camera (**Camera**).

Top: Return to the top display.

Thumbnail area: Downloaded pictures.

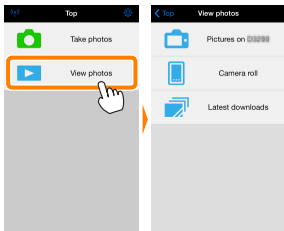
Viewing Photos

Tap **View photos** to view the pictures stored on the iOS device. You can also view the pictures on the camera memory card and download selected images to the iOS device.

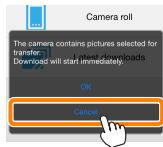
Viewing Pictures

View the pictures in camera memory or on the iOS device.

1 Tap **View photos**.

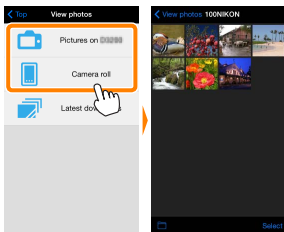


If the camera has an option that can be used to select pictures for transfer, a confirmation will be displayed if any images are currently selected. Tap **Cancel** to view pictures.



2 Choose a device.

Tap **Pictures on camera** to view the pictures on the camera memory card, **Camera roll** to view the pictures stored in the camera roll on the iOS device. The pictures will be displayed as small “thumbnail” images.



3 View pictures.

Tap a thumbnail to display the picture full frame. You can then swipe left or right to view additional pictures, or tap **i** to view information about the current image.




✓ Movies

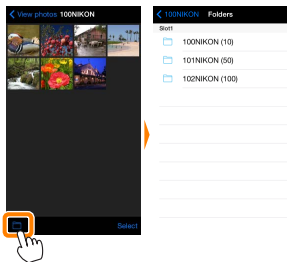
The Wireless Mobile Utility can not be used to view or download movies.

✓ Deleting Pictures

Pictures can not be deleted using the Wireless Mobile Utility, but pictures can be deleted from the camera roll on the iOS device.

✎ Choosing a Folder

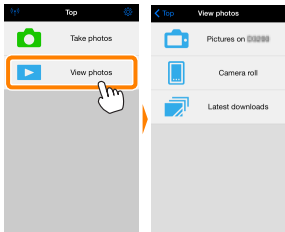
The iOS device will either show a folder list or display the pictures on the camera memory card as small “thumbnail” images. When thumbnails are displayed, the folders can be viewed by tapping the  icon, while folders are displayed, you can tap a folder to view its contents in a thumbnail list.



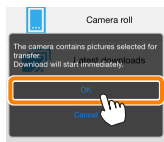
Downloading Existing Pictures

Download pictures to the camera roll on the iOS device.

1 Tap View photos.

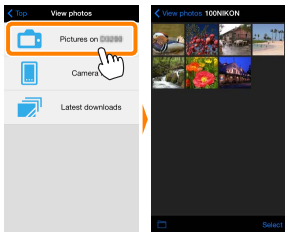


If the camera has an option that can be used to select pictures for transfer, a confirmation will be displayed if any images are currently selected. Tap **OK** to begin download.



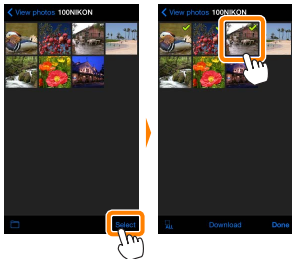
2 Tap Pictures on camera.

Tap **Pictures on camera** to view the pictures on the camera.

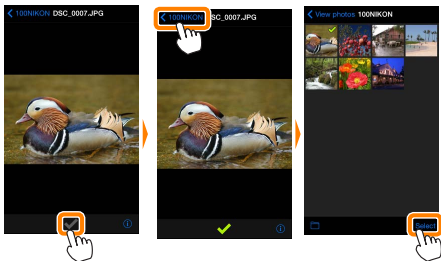


3 Select pictures for download.

Tap **Select** and then thumbnails to select or deselect (to deselect all pictures, tap **ALL**). Selected pictures are indicated by a check mark.



Alternatively, you can select pictures by tapping a picture in the thumbnail list to display it full frame and then tapping the check mark to select or deselect. Swipe left or right to view additional pictures. After selecting the desired pictures, tap the folder name to return to the thumbnail list and then tap **Select**.



❑ Dropped Connections

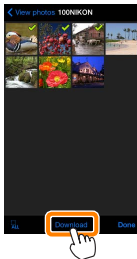
If the wireless connection is lost while a picture is being downloaded, the picture will not be saved to the iOS device (connection loss may occur if, for example, the camera turns off during download). Any pictures downloaded before the connection was interrupted are unaffected.

❑ Downloading Existing Pictures

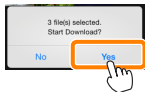
NEF (RAW) images are converted to JPEG format; if the images were recorded using an NEF (RAW) + JPEG option, only the JPEG copy will be downloaded. Exif data will be adapted to iOS specifications.

4 Tap Download.

Tap **Download** to download the selected pictures to the camera roll on the iOS device.



If multiple pictures are selected, a confirmation dialog will be displayed; tap **Yes** to download the pictures at the size selected for **Image size** in the **Settings** menu (page [25](#)).



If only one picture is selected, you will be prompted to choose the size at which the picture will be copied to the iOS device. Choose a size (page [25](#)) and then tap **Download** to download the picture.

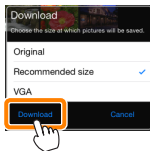
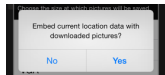


Image Size

Regardless of the size selected, pictures may sometimes be downloaded at their original size.

Location Data

The options shown at right will be displayed if **Settings > Embed location data > Take photos** is enabled (page [26](#)).



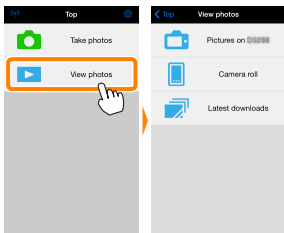
Latest Downloads

Tap **Latest downloads** to view the 12 most recently downloaded pictures at their original size and in their original format. Location data are not included with the files in "Latest downloads", regardless of the option selected for **Settings > Embed location data**.

Sharing Pictures

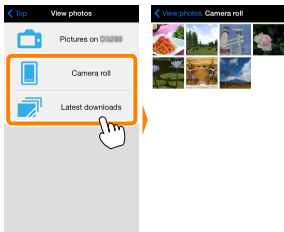
Connect to the Internet before sharing pictures via third-party apps or social networking sites or other services. If you are currently connected to the camera via Wi-Fi, end the connection and connect to a network with Internet access.

1 Tap **View photos**.



2 Choose **Camera roll** or **Latest downloads**.

Tap **Camera roll** to view the pictures already downloaded to the iOS camera roll.




3 View pictures.

Tap a thumbnail to view the picture full frame.




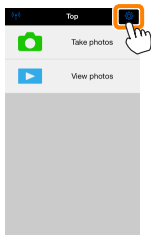
4 Tap .

After displaying a picture you want to share, tap  and choose from a list of picture-sharing apps and functions (the specific contents of the list vary from device to device).



Wireless Mobile Utility Options

The options listed below can be accessed by tapping the  icon in the Wireless Mobile Utility top display.



Connection Status

Option	Description
Camera	The model name and battery level for the camera currently connected.
Wireless Mobile Adapter	View the wireless mobile adapter product name and firmware version. Not available with cameras that feature built-in Wi-Fi.

Settings

Option	Description
Synchronize clock	Synchronize the camera clock with the iOS device.
Set camera clock	Synchronize the camera clock with the iOS device.
Set automatically	If On is selected, the camera clock will automatically be synchronized with the iOS device when a connection is established.
Thumbnails	Choose the size of the thumbnails in the playback display.
Image size	When downloading multiple images, select Recommended size or VGA to copy images at sizes approximately equivalent to 1920 × 1080 or 640 × 480, respectively.

Option	Description
WMA settings (Wireless Mobile Adapter settings)	Adjust network settings for the wireless mobile adapter.
SSID	Choose an SSID for the wireless mobile adapter. The iOS device displays the SSID when you connect to the network manually.
Authentication	Choose the authentication method used for connection to the network.
Password	Enter a password. The password type is selected using Advanced settings > Password entry : choose ASCII for an 8- to 63-character alphanumeric password, HEX for a 64-digit hexadecimal password.
Channel	Choose the wireless channel used by the network.
Auto power-off delay	Choose the delay before the wireless mobile adapter enters sleep when there is no wireless connection. Not available with cameras that feature built-in Wi-Fi.
Advanced settings	<ul style="list-style-type: none"> • Password entry: Choose the password type. • Sub-net mask: Enter a subnet mask. • DHCP server IP address: Enter the wireless mobile adapter IP address. • DHCP client IP address: Enter the iOS device IP address.
Format settings	Restore default settings.
Embed location data	Choose whether to embed iOS location data in pictures not already containing location data provided by the camera. Note that devices not equipped with GPS or comparable location data functions may fail to supply the correct location.

Battery Warning Level

Remote photography will end automatically when the camera or iOS device battery reaches the selected level.

Help

Option	Description
Instructions	View instructions for using the Wireless Mobile Utility.
Support websites	Access the support site for the Wireless Mobile Utility.
App version	View Wireless Mobile Utility version information.

Terms of Use

View the Wireless Mobile Utility terms of use.

B D3200, COOLPIX A

This section describes the options available when the Wireless Mobile Utility and an optional wireless mobile adapter are used to connect to D3200 and COOLPIX A cameras.

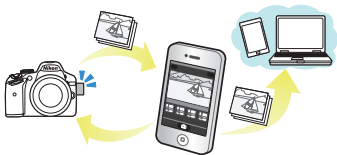
Features

Use the Wireless Mobile Utility to:



Take pictures remotely (📖 36): Tap the shutter icon in the Wireless Mobile Utility to take pictures and download them to the iOS device.

Download pictures as they are taken (📖 39): Take pictures with the camera and save them to the iOS device.



View pictures (📖 41): View the pictures stored on the iOS device or the camera memory card.

Download pictures (📖 44): Download existing pictures from the camera memory card.

Share pictures (📖 48): Share pictures via e-mail or upload pictures to photo-sharing sites.

For information on inserting the adapter, see page [30](#).

Notices

- No part of this manual may be reproduced, transmitted, transcribed, stored in a retrieval system, or translated into any language in any form without Nikon's prior written permission.
- Nikon reserves the right to change the specifications of the hardware and software described in this manual at any time and without prior notice. Nikon will not be held liable for damages that may result from any mistakes that this manual may contain.

System Requirements

Before installing the Wireless Mobile Utility, confirm that your iOS device meets the following system requirements:

OS	iOS 8.4 or later
Wireless LAN	11b/g/n

Using This Application for the First Time

Read the terms of use (page [52](#)) before connecting.

Wi-Fi Security

Password protection and other Wi-Fi security features are not automatically enabled. Be sure to enable Wi-Fi security on the iOS device after connecting for the first time.

The Wireless Mobile Adapter

While the adapter is inserted, the camera exposure meters will not turn off; monitor the camera battery level to ensure that the camera does not power off unexpectedly. In addition, some camera menu items may be grayed out and unavailable and the camera can not be used for playback or live view. Movie recording can not be used.

Installing the App



- 1 Locate the app on the App Store.**
Connect to the App Store on the iOS device and search for “Wireless Mobile Utility”.
- 2 Install the app.**
Install the Wireless Mobile Utility.

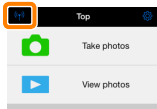
Establishing a Wireless Connection

- 1 Connect the wireless mobile adapter.**
Attach the wireless mobile adapter to the camera and turn the camera on. See the manual supplied with the wireless mobile adapter for details.
- 2 Enable Wi-Fi on the iOS device.**
If Wi-Fi is off, turn it on.
- 3 Select the appropriate SSID.**
The default SSID begins with “Nikon”. iOS-compliant devices can not be connected using WPS.
- 4 Launch the Wireless Mobile Utility.**
After selecting **On** for **Privacy > Photos > WMU**, launch the Wireless Mobile Utility. When a connection is established, the LED on the wireless mobile adapter will glow green and the main dialog for the Wireless Mobile Utility will be displayed on the iOS device. For information on enabling wireless security, see page [32](#). For information on taking pictures, see page [36](#). For information on viewing pictures, see page [41](#).


Connection Status

Connection status is shown by an icon in the home display:

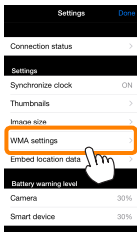
- : Connection established.
- : No connection. Tap the icon to open the iOS device settings menu and check Wi-Fi settings.



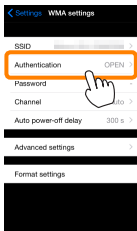
Wi-Fi Security

Wi-Fi security will not be enabled the first time you connect. Security can be enabled by opening the Wireless Mobile Utility settings menu ( [50](#)) and following the steps below.

1 Tap WMA settings.

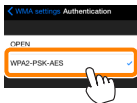


2 Tap Authentication.



3 Select WPA2-PSK-AES.

Tap WPA2-PSK-AES.



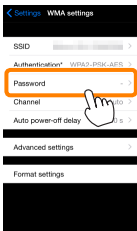
Tap **WMA settings** to return to the WMA settings menu.



If you are prompted to enter a password, tap **OK**.

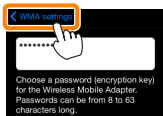


4 Tap Password.



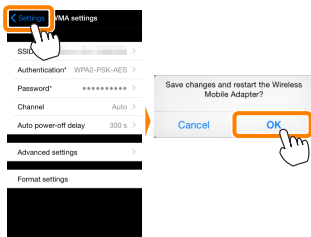
5 Enter a password.

Enter a password and tap **WMA settings** (📖 51). Passwords may be from 8 to 63 characters long.



6 Enable wireless security.

Tap **Settings**. A confirmation dialog will be displayed; tap **OK**.



The iOS device may prompt you for this password the next time you connect to the camera via Wi-Fi.

☑ Security

Although one of the benefits of a wireless-enabled device is that it allows others to freely connect for the wireless exchange of data anywhere within its range, the following may occur if security is not enabled:

- **Data theft:** Malicious third-parties may intercept wireless transmissions to steal user IDs, passwords, and other personal information.
- **Unauthorized access:** Unauthorized users may gain access to the network and alter data or perform other malicious actions. Note that due to the design of wireless networks, specialized attacks may allow unauthorized access even when security is enabled.

Taking Photos

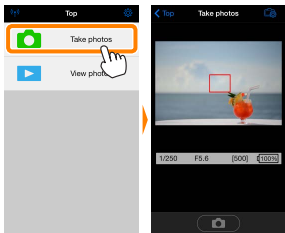
Take pictures remotely from the iOS device, or take pictures with the camera and save them to the iOS device.

Remote Photography

Follow the steps below to take photos from the iOS device.

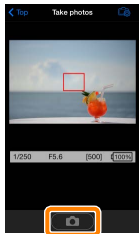
1 Tap Take photos.

The camera viewfinder will go dark and the iOS device will display the view through the camera lens.



2 Tap the shutter icon.

Tap the shutter. If the camera is able to focus, the shutter will be released after you remove your finger from the icon; the resulting photo is first saved to the camera memory card and then downloaded to the iOS device. There is no need to point the iOS device at the wireless mobile adapter.



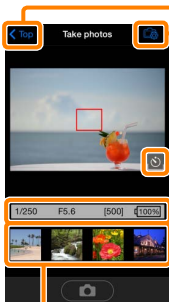
Remote Photography

Remote photography ends automatically when the battery in the camera or iOS device runs low. Note that using remote photography for an extended period may cause the camera's internal temperature to rise; if necessary, remote photography will end automatically to minimize damage to camera circuits.


The iOS device can not be used to adjust camera settings; use camera controls to adjust settings before starting Step 1. Regardless of the release mode selected with the camera, only one picture will be taken each time you tap the shutter icon. Note that the display may not update smoothly depending on the device and network conditions.

In normal- and wide-area AF AF-area modes, the camera will focus on the subject in the focus area selected with the camera; if subject-tracking AF is selected, the camera will focus using wide-area AF.

The Remote Photography Display



Top: Return to the top display.

: Display the following photography-related options.

- **Shoot (D3200 only):** Choose whether to take pictures using the iOS device (**WMU**) or the camera (**Camera**).
- **Download after shooting:** Choose whether pictures are automatically downloaded to the iOS device. Available only when **WMU** is selected for **Shoot**.
- **Self-timer:** If **On** is selected, the camera shutter will be released 2 s after you tap the shutter icon. The timer turns off automatically after the shutter is released.

Self-timer icon: Displayed when the self-timer is on.

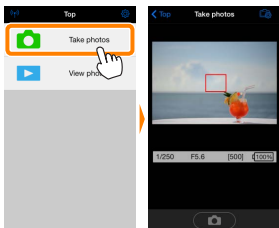
Camera settings: Shutter speed, aperture, etc. Not displayed when device is in landscape orientation.

Thumbnail area: Downloaded pictures.

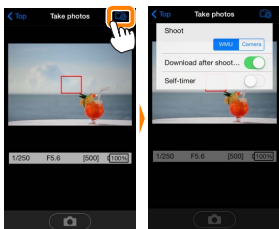
Downloading Photos as They Are Taken (D3200 only)

Take photos with the camera and save them to the iOS device.

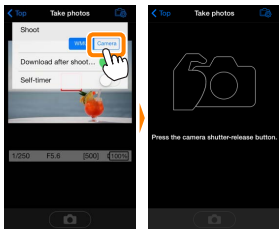
1 Tap Take photos.



2 Tap .

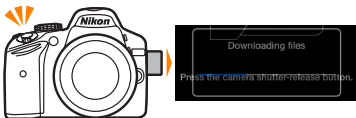


3 Tap Camera.



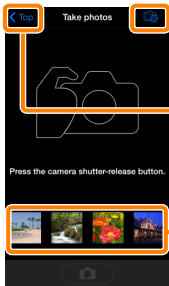
4 Take photos.


Frame photos in the camera viewfinder and shoot. Photos are downloaded to the iOS device after being saved to the camera memory card.



The Photo Capture Display

The photo capture display is shown below.



: Display **Shoot** options and choose whether to take pictures using the iOS device (**WMU**) or the camera (**Camera**).

Top: Return to the top display.

Thumbnail area: Downloaded pictures.

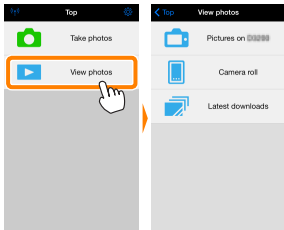
Viewing Photos

Tap **View photos** to view the pictures stored on the iOS device. You can also view the pictures on the camera memory card and download selected images to the iOS device.

Viewing Pictures

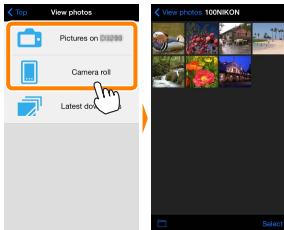
View the pictures in camera memory or on the iOS device.

1 Tap **View photos**.



2 Choose a device.

Tap **Pictures on camera** to view the pictures on the camera memory card, **Camera roll** to view the pictures stored in the camera roll on the iOS device. The pictures will be displayed as small “thumbnail” images.



3 View pictures.

Tap a thumbnail to display the picture full frame. You can then swipe left or right to view additional pictures, or tap **i** to view information about the current image.




✓ Movies

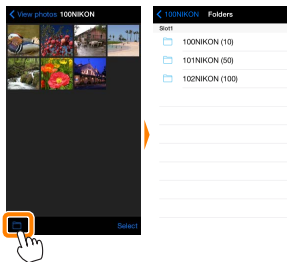
The Wireless Mobile Utility can not be used to view or download movies.

✓ Deleting Pictures

Pictures can not be deleted using the Wireless Mobile Utility, but pictures can be deleted from the camera roll on the iOS device.

✗ Choosing a Folder

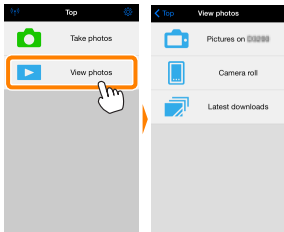
The iOS device will either show a folder list or display the pictures on the camera memory card as small “thumbnail” images. When thumbnails are displayed, the folders can be viewed by tapping the  icon, while folders are displayed, you can tap a folder to view its contents in a thumbnail list.



Downloading Existing Pictures

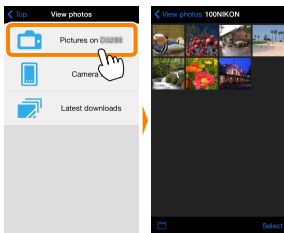
Download pictures to the camera roll on the iOS device.

1 Tap View photos.



2 Tap Pictures on camera.

Tap Pictures on camera to view the pictures on the camera.

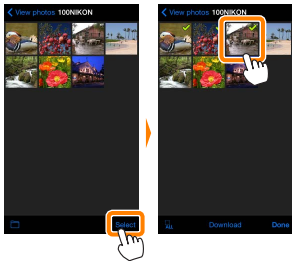


Dropped Connections

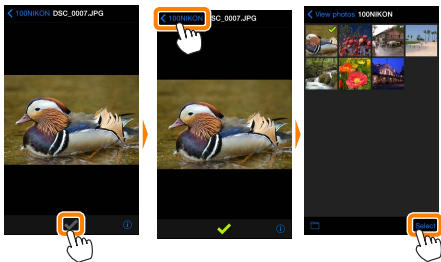
If the wireless connection is lost while a picture is being downloaded, the picture will not be saved to the iOS device (connection loss may occur if, for example, the camera turns off during download). Any pictures downloaded before the connection was interrupted are unaffected.

3 Select pictures for download.

Tap **Select** and then thumbnails to select or deselect (to deselect all pictures, tap **All**). Selected pictures are indicated by a check mark.



Alternatively, you can select pictures by tapping a picture in the thumbnail list to display it full frame and then tapping the check mark to select or deselect. Swipe left or right to view additional pictures. After selecting the desired pictures, tap the folder name to return to the thumbnail list and then tap **Select**.

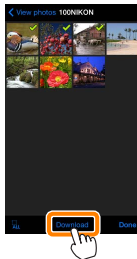


☑ Downloading Existing Pictures

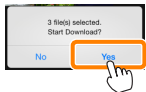
NEF (RAW) images are converted to JPEG format; if the images were recorded using an NEF (RAW) + JPEG option, only the JPEG copy will be downloaded. Exif data will be adapted to iOS specifications.

4 Tap Download.

Tap **Download** to download the selected pictures to the camera roll on the iOS device.



If multiple pictures are selected, a confirmation dialog will be displayed; tap **Yes** to download the pictures at the size selected for **Image size** in the **Settings** menu (page [50](#)).



If only one picture is selected, you will be prompted to choose the size at which the picture will be copied to the iOS device. Choose a size (page [50](#)) and then tap **Download** to download the picture.

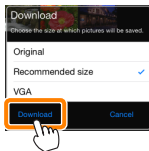
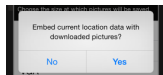


Image Size

Regardless of the size selected, pictures may sometimes be downloaded at their original size.

Location Data

The options shown at right will be displayed if **Settings > Embed location data > Take photos** is enabled (page [51](#)).



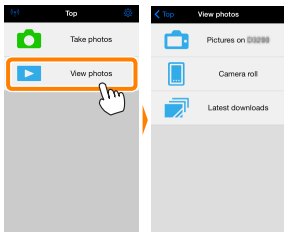
Latest Downloads

Tap **Latest downloads** to view the 12 most recently downloaded pictures at their original size and in their original format. Location data are not included with the files in "Latest downloads", regardless of the option selected for **Settings > Embed location data**.

Sharing Pictures

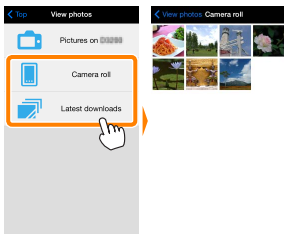
Connect to the Internet before sharing pictures via third-party apps or social networking sites or other services. If you are currently connected to the camera via Wi-Fi, end the connection and connect to a network with Internet access.

1 Tap View photos.



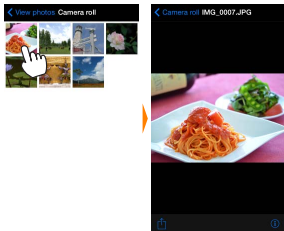
3 Choose Camera roll or Latest downloads.

Tap **Camera roll** to view the pictures already downloaded to the iOS camera roll.




3 View pictures.

Tap a thumbnail to view the picture full frame.




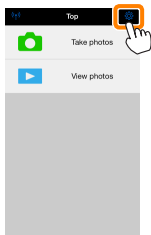
4 Tap .

After displaying a picture you want to share, tap  and choose from a list of picture-sharing apps and functions (the specific contents of the list vary from device to device).



Wireless Mobile Utility Options

The options listed below can be accessed by tapping the  icon in the Wireless Mobile Utility top display.



Connection Status

Option	Description
Camera	The model name and battery level for the camera currently connected.
Wireless Mobile Adapter	View the wireless mobile adapter product name and firmware version.

Settings

Option	Description
Synchronize clock	Synchronize the camera clock with the iOS device.
Set camera clock	Synchronize the camera clock with the iOS device.
Set automatically	If On is selected, the camera clock will automatically be synchronized with the iOS device when a connection is established.
Thumbnails	Choose the size of the thumbnails in the playback display.
Image size	When downloading multiple images, select Recommended size or VGA to copy images at sizes approximately equivalent to 1920 × 1080 or 640 × 480, respectively.

Option	Description
WMA settings (Wireless Mobile Adapter settings)	Adjust network settings for the wireless mobile adapter.
SSID	Choose an SSID for the wireless mobile adapter. The iOS device displays the SSID when you connect to the network manually.
Authentication	Choose the authentication method used for connection to the network.
Password	Enter a password. The password type is selected using Advanced settings > Password entry : choose ASCII for an 8- to 63-character alphanumeric password, HEX for a 64-digit hexadecimal password.
Channel	Choose the wireless channel used by the network.
Auto power-off delay	Choose the delay before the wireless mobile adapter enters sleep when there is no wireless connection.
Advanced settings	<ul style="list-style-type: none"> • Password entry: Choose the password type. • Sub-net mask: Enter a subnet mask. • DHCP server IP address: Enter the wireless mobile adapter IP address. • DHCP client IP address: Enter the iOS device IP address.
Format settings	Restore default settings.
Embed location data	Choose whether to embed iOS location data in pictures not already containing location data provided by the camera. Note that devices not equipped with GPS or comparable location data functions may fail to supply the correct location.

Battery Warning Level

Remote photography will end automatically when the camera or iOS device battery reaches the selected level.

Help

Option	Description
Instructions	View instructions for using the Wireless Mobile Utility.
Support websites	Access the support site for the Wireless Mobile Utility.
App version	View Wireless Mobile Utility version information.

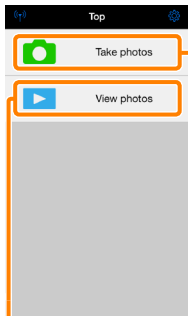
Terms of Use

View the Wireless Mobile Utility terms of use.

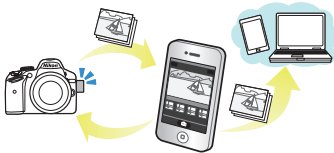
This section describes the options available when the Wireless Mobile Utility is used with Nikon 1 cameras that offer built-in Wi-Fi or support the optional wireless mobile adapter.

Features

Use the Wireless Mobile Utility to:



Take pictures remotely (📖 [60](#)): Tap the shutter icon in the Wireless Mobile Utility to take pictures and download them to the iOS device.



View pictures (📖 [63](#)): View the pictures stored on the iOS device or the camera memory card.

Download pictures (📖 [66](#)): Download existing pictures from the camera memory card.

Share pictures (📖 [71](#)): Share pictures via e-mail or upload pictures to photo-sharing sites.

For information on establishing a connection, see page [55](#).

Notices

- No part of this manual may be reproduced, transmitted, transcribed, stored in a retrieval system, or translated into any language in any form without Nikon's prior written permission.
- Nikon reserves the right to change the specifications of the hardware and software described in this manual at any time and without prior notice. Nikon will not be held liable for damages that may result from any mistakes that this manual may contain.

System Requirements

Before installing the Wireless Mobile Utility, confirm that your iOS device meets the following system requirements:

OS	iOS 8.4 or later
Wireless LAN	11b/g/n

Using This Application for the First Time

Read the terms of use (page [75](#)) before connecting.

Wi-Fi Security

Password protection and other Wi-Fi security features are not automatically enabled. Be sure to enable Wi-Fi security on the iOS device after connecting for the first time. If you are using a Nikon 1 J5, enable security on the camera before connecting.

The Wireless Mobile Adapter

While the adapter is inserted, the camera exposure meters will not turn off; monitor the camera battery level to ensure that the camera does not power off unexpectedly. In addition, some camera menu items may be grayed out and unavailable and the camera can not be used for playback or live view. Movie recording can not be used.

Installing the App

- 1 Locate the app on the App Store.**
Connect to the App Store on the iOS device and search for “Wireless Mobile Utility”.
- 2 Install the app.**
Install the Wireless Mobile Utility.

Establishing a Wireless Connection

The procedure varies with the type of camera.

Cameras with Built-in Wireless LAN



See the camera manual.

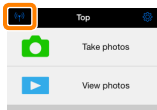
Cameras Without Built-in Wireless LAN

- 1 Connect the wireless mobile adapter.**
Attach the wireless mobile adapter to the camera and turn the camera on. See the manual supplied with the wireless mobile adapter for details.
- 2 Enable Wi-Fi on the iOS device.**
If Wi-Fi is off, turn it on.
- 3 Select the appropriate SSID.**
The default SSID begins with “Nikon”. iOS-compliant devices can not be connected using WPS.
- 4 Launch the Wireless Mobile Utility.**
After selecting **On** for **Privacy > Photos > WMU**, launch the Wireless Mobile Utility. When a connection is established, the LED on the wireless mobile adapter will glow green and the main dialog for the Wireless Mobile Utility will be displayed on the iOS device. For information on enabling wireless security, see page [57](#). For information on taking pictures, see page [60](#). For information on viewing pictures, see page [63](#).

Connection Status

Connection status is shown by an icon in the home display:

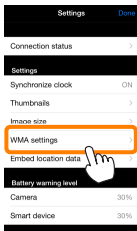
- : Connection established.
- : No connection. Tap the icon to open the iOS device settings menu and check Wi-Fi settings.



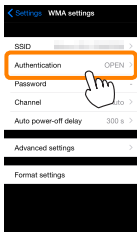
Wi-Fi Security

Wi-Fi security will not be enabled the first time you connect. Users of the Nikon 1 V3 or J4 or the wireless mobile adapter can enable security by opening the Wireless Mobile Utility settings menu (📖 73) and following the steps below. Users of the Nikon 1 J5 should instead enable security on the camera before connecting.

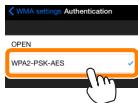
1 Tap WMA settings.



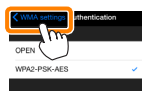
2 Tap Authentication.



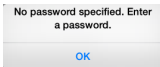
3 Select **WPA2-PSK-AES**.
Tap **WPA2-PSK-AES**.



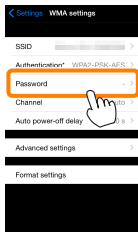
Tap **WMA settings** to return to the WMA settings menu.



If you are prompted to enter a password, tap **OK**.

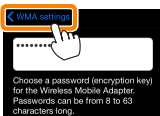


4 Tap **Password**.



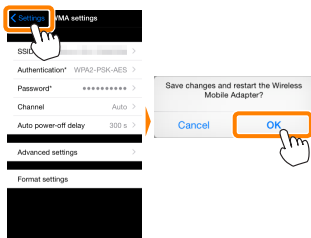
5 Enter a password.

Enter a password and tap **WMA settings** (📖 74). Passwords may be from 8 to 63 characters long.



6 Enable wireless security.

Tap **Settings**. A confirmation dialog will be displayed; tap **OK**.



The iOS device may prompt you for this password the next time you connect to the camera via Wi-Fi.

Security

Although one of the benefits of a wireless-enabled device is that it allows others to freely connect for the wireless exchange of data anywhere within its range, the following may occur if security is not enabled:

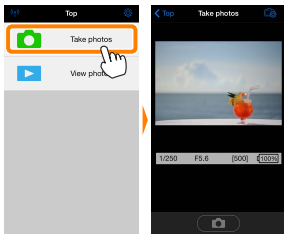
- **Data theft:** Malicious third-parties may intercept wireless transmissions to steal user IDs, passwords, and other personal information.
- **Unauthorized access:** Unauthorized users may gain access to the network and alter data or perform other malicious actions. Note that due to the design of wireless networks, specialized attacks may allow unauthorized access even when security is enabled.

Taking Photos

Follow the steps below to take photos from the iOS device.

1 Tap Take photos.

The camera viewfinder will go dark and the iOS device will display the view through the camera lens.



2 Tap the shutter icon.

The shutter will be released after you remove your finger from the icon and the camera focuses (note that no photo will be taken if the camera is unable to focus); the resulting photo is first saved to the camera memory card and then downloaded to the iOS device. There is no need to point the iOS device at the wireless mobile adapter.



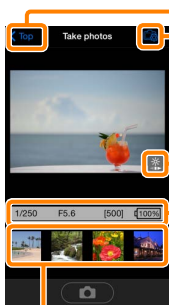
✔ Remote Photography

Remote photography ends automatically when the battery in the camera or iOS device runs low. Note that using remote photography for an extended period may cause the camera's internal temperature to rise; if necessary, remote photography will end automatically to minimize damage to camera circuits.


The iOS device can not be used to adjust camera settings; use camera controls to adjust settings before starting Step 1. Regardless of the release mode selected with the camera, only one picture will be taken each time you tap the shutter icon. Note that the display may not update smoothly depending on the device and network conditions.


Regardless of the settings selected with the camera, pictures will be taken in mode **P** (programmed auto) using single-servo autofocus (AF-S) and auto-area AF. **Face-priority AF** is disabled and the focus point is not displayed.


The Remote Photography Display

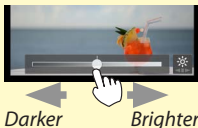


Top: Return to the top display.

: Display the following photography-related options.

- **Download after shooting:** Choose whether pictures are automatically downloaded to the iOS device.
- **Self-timer:** If **On** is selected, a  icon will be displayed and the camera shutter will be released 2 s after you tap the shutter icon. The timer turns off automatically after the shutter is released.

Brightness (Nikon 1 J5 only): Tapping  displays a slider that lets you adjust image brightness using the camera's exposure compensation control.



Camera settings: Shutter speed, aperture, etc. Not displayed when device is in landscape orientation.

Thumbnail area: Downloaded pictures.

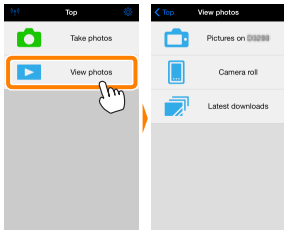
Viewing Photos

Tap **View photos** to view the pictures stored on the iOS device. You can also view the pictures on the camera memory card and download selected images to the iOS device.

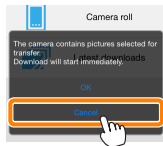
Viewing Pictures

View the pictures in camera memory or on the iOS device.

1 Tap **View photos**.

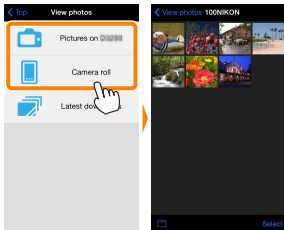


If the camera has an option that can be used to select pictures for transfer, a confirmation will be displayed if any images are currently selected. Tap **Cancel** to view pictures.



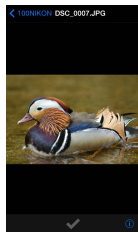
2 Choose a device.

Tap **Pictures on camera** to view the pictures on the camera memory card, **Camera roll** to view the pictures stored in the camera roll on the iOS device. The pictures will be displayed as small “thumbnail” images.



3 View pictures.

Tap a thumbnail to display the picture full frame. You can then swipe left or right to view additional pictures, or tap **i** to view information about the current image.




✓ Movies

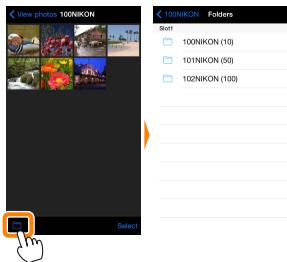
The Wireless Mobile Utility can not be used to view or download movies.

✓ Deleting Pictures

Pictures can not be deleted using the Wireless Mobile Utility, but pictures can be deleted from the camera roll on the iOS device.

✗ Choosing a Folder

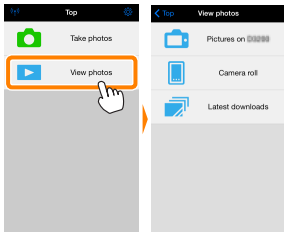
The iOS device will either show a folder list or display the pictures on the camera memory card as small “thumbnail” images. When thumbnails are displayed, the folders can be viewed by tapping the  icon, while folders are displayed, you can tap a folder to view its contents in a thumbnail list.



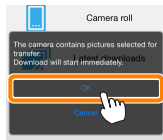
Downloading Existing Pictures

Download pictures to the camera roll on the iOS device.

1 Tap View photos.

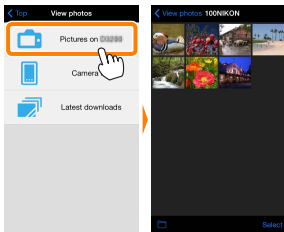


If the camera has an option that can be used to select pictures for transfer, a confirmation will be displayed if any images are currently selected. Tap **OK** to begin download.



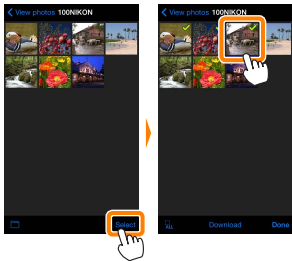
2 Tap Pictures on camera.

Tap **Pictures on camera** to view the pictures on the camera.

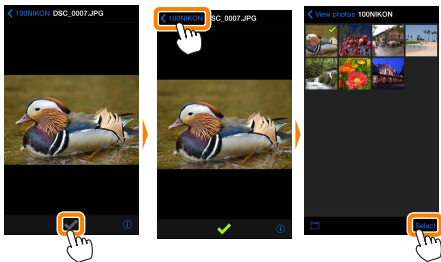


3 Select pictures for download.

Tap **Select** and then thumbnails to select or deselect (to deselect all pictures, tap **All**). Selected pictures are indicated by a check mark.



Alternatively, you can select pictures by tapping a picture in the thumbnail list to display it full frame and then tapping the check mark to select or deselect. Swipe left or right to view additional pictures. After selecting the desired pictures, tap the folder name to return to the thumbnail list and then tap **Select**.



❑ Dropped Connections

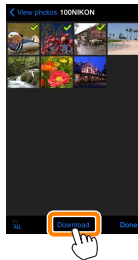
If the wireless connection is lost while a picture is being downloaded, the picture will not be saved to the iOS device (connection loss may occur if, for example, the camera turns off during download). Any pictures downloaded before the connection was interrupted are unaffected.

❑ Downloading Existing Picture

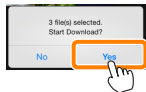
NEF (RAW) images are converted to JPEG format; if the images were recorded using an NEF (RAW) + JPEG option, only the JPEG copy will be downloaded. Exif data will be adapted to iOS specifications.

4 Tap Download.

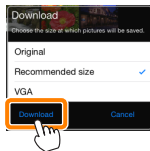
Tap **Download** to download the selected pictures to the camera roll on the iOS device.



If multiple pictures are selected, a confirmation dialog will be displayed; tap **Yes** to download the pictures at the size selected for **Image size** in the **Settings** menu (page [73](#)).



If only one picture is selected, you will be prompted to choose the size at which the picture will be copied to the iOS device. Choose a size (page [73](#)) and then tap **Download** to download the picture.

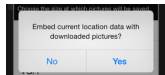


✍ Image Size

Regardless of the size selected, pictures may sometimes be downloaded at their original size.

✍ Location Data

The options shown at right will be displayed if **Settings > Embed location data > Take photos** is enabled (page [74](#)).



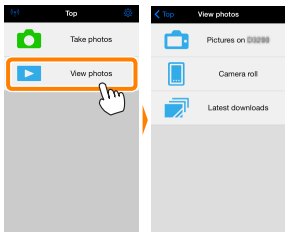
✍ Latest Downloads

Tap **Latest downloads** to view the 12 most recently downloaded pictures at their original size and in their original format. Location data are not included with the files in "Latest downloads", regardless of the option selected for **Settings > Embed location data**.

Sharing Pictures

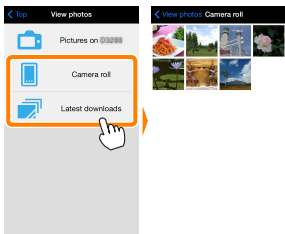
Connect to the Internet before sharing pictures via third-party apps or social networking sites or other services. If you are currently connected to the camera via Wi-Fi, end the connection and connect to a network with Internet access.

1 Tap View photos.



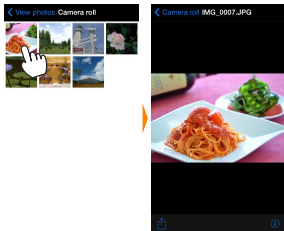
2 Choose Camera roll or Latest downloads.

Tap **Camera roll** to view the pictures already downloaded to the iOS camera roll.




3 View pictures.

Tap a thumbnail to view the picture full frame.




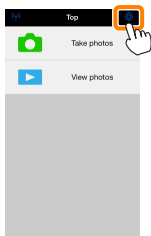
4 Tap .

After displaying a picture you want to share, tap  and choose from a list of picture-sharing apps and functions (the specific contents of the list vary from device to device).



Wireless Mobile Utility Options

The options listed below can be accessed by tapping the  icon in the Wireless Mobile Utility top display.



Connection Status

Option	Description
Camera	The model name and battery level for the camera currently connected.
Wireless Mobile Adapter	View the wireless mobile adapter product name and firmware version.

Settings

Option	Description
Synchronize clock	Synchronize the camera clock with the iOS device.
Set camera clock	Synchronize the camera clock with the iOS device.
Set automatically	If On is selected, the camera clock will automatically be synchronized with the iOS device when a connection is established.
Thumbnails	Choose the size of the thumbnails in the playback display.
Image size	When downloading multiple images, select Recommended size or VGA to copy images at sizes approximately equivalent to 1920 × 1080 or 640 × 480, respectively.

Option	Description
WMA settings (Wireless Mobile Adapter settings)	Adjust network settings for the wireless mobile adapter. Not available with the Nikon 1 J5.
SSID	Choose an SSID for the wireless mobile adapter. The iOS device displays the SSID when you connect to the network manually.
Authentication	Choose the authentication method used for connection to the network.
Password	Enter a password. The password type is selected using Advanced settings > Password entry : choose ASCII for an 8- to 63-character alphanumeric password, HEX for a 64-digit hexadecimal password.
Channel	Choose the wireless channel used by the network.
Auto power-off delay	Choose the delay before the wireless mobile adapter enters sleep when there is no wireless connection.
Advanced settings	<ul style="list-style-type: none"> • Password entry: Choose the password type. • Sub-net mask: Enter a subnet mask. • DHCP server IP address: Enter the wireless mobile adapter IP address. • DHCP client IP address: Enter the iOS device IP address.
Format settings	Restore default settings.
Embed location data	Choose whether to embed iOS location data in pictures not already containing location data provided by the camera. Note that devices not equipped with GPS or comparable location data functions may fail to supply the correct location.

Battery Warning Level

Remote photography will end automatically when the camera or iOS device battery reaches the selected level.

Help

Option	Description
Instructions	View instructions for using the Wireless Mobile Utility.
Support websites	Access the support site for the Wireless Mobile Utility.
App version	View Wireless Mobile Utility version information.

Terms of Use

View the Wireless Mobile Utility terms of use.

D Other COOLPIX Cameras

This section describes the options available when the Wireless Mobile Utility is used with COOLPIX cameras that offer built-in Wi-Fi or support the optional wireless mobile adapter.

Features

Use the Wireless Mobile Utility to:



Take pictures remotely (📖 [86](#)): Tap the shutter icon in the Wireless Mobile Utility to take pictures and download them to the iOS device.

Download pictures as they are taken (📖 [89](#)): Take pictures with a compatible camera and save them to the iOS device.



View pictures (📖 [91](#)): View the pictures stored on the iOS device or the camera memory card.

Download pictures (📖 [94](#)): Download existing pictures from the camera memory card.

Share pictures (📖 [99](#)): Share pictures via e-mail or upload pictures to photo-sharing sites.

For information on establishing a connection, see page [78](#).

Notices

- No part of this manual may be reproduced, transmitted, transcribed, stored in a retrieval system, or translated into any language in any form without Nikon's prior written permission.
- Nikon reserves the right to change the specifications of the hardware and software described in this manual at any time and without prior notice. Nikon will not be held liable for damages that may result from any mistakes that this manual may contain.

System Requirements


Before installing the Wireless Mobile Utility, confirm that your iOS device meets the following system requirements:

OS	iOS 8.4 or later
Wireless LAN	11b/g/n

Using This Application for the First Time

Read the terms of use (page [103](#)) before connecting.

Wi-Fi Security

Password protection and other Wi-Fi security features are not automatically enabled. If you are using a wireless mobile adapter, be sure to enable Wi-Fi security on the iOS device after connecting for the first time. If you are using a camera with built-in Wi-Fi, enable security on the camera before connecting ( [83](#)).

Wi-Fi


The camera Wi-Fi function is available only when a memory card is inserted and no USB or HDMI cables are connected.

Installing the App

- 1 Locate the app on the App Store.**
Connect to the App Store on the iOS device and search for “Wireless Mobile Utility”.
- 2 Install the app.**
Install the Wireless Mobile Utility.

Establishing a Wireless Connection

The following applies only to cameras without built-in Wi-Fi. For information on cameras with built-in Wi-Fi, see the manual provided with the camera.



- 1 Connect the wireless mobile adapter.**
Attach the wireless mobile adapter to the camera and turn the camera on. See the manual supplied with the wireless mobile adapter for details.
- 2 Enable Wi-Fi on the iOS device.**
If Wi-Fi is off, turn it on.
- 3 Select the appropriate SSID.**
The default SSID begins with “Nikon”. iOS-compliant devices can not be connected using WPS.
- 4 Launch the Wireless Mobile Utility.**
After selecting **On** for **Privacy > Photos > WMU**, launch the Wireless Mobile Utility. When a connection is established, the LED on the wireless mobile adapter will glow green and the main dialog for the Wireless Mobile Utility will be displayed on the iOS device. After enabling wireless security ( [80](#)), take and view pictures as described on pages [86](#) and [91](#), respectively.

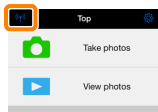
❑ The Wireless Mobile Adapter (for Cameras Without Built-in Wi-Fi)

While the adapter is inserted, the camera exposure meters will not turn off; monitor the camera battery level to ensure that the camera does not power off unexpectedly. In addition, some camera menu items may be grayed out and unavailable and the camera can not be used for playback or live view. Movie recording can not be used.


🔍 Connection Status

Connection status is shown by an icon in the home display:


- : Connection established.
- : No connection. Tap the icon to open the iOS device settings menu and check Wi-Fi settings.



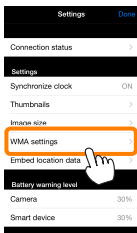
Wi-Fi Security

Wi-Fi security will not be enabled the first time you connect. If you are using a wireless mobile adapter, security can be enabled in the Wireless Mobile Utility settings menu (see below). If you are using a camera with built-in Wi-Fi, enable security on the camera before connecting ( [83](#)).

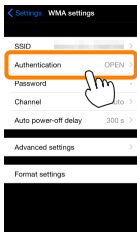
The Wireless Mobile Adapter

To enable wireless security, open the Wireless Mobile Utility settings menu ( [101](#)) and follow the steps below.

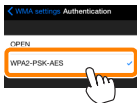
1 Tap WMA settings.



2 Tap Authentication.



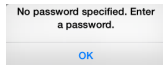
3 Select **WPA2-PSK-AES**.
Tap **WPA2-PSK-AES**.



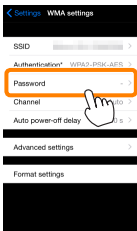
Tap **WMA settings** to return to the WMA settings menu.



If you are prompted to enter a password, tap **OK**.

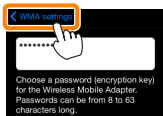


4 Tap **Password**.



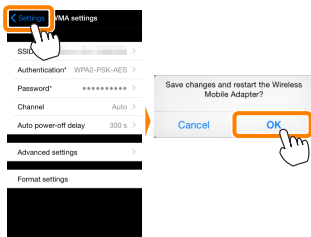
5 Enter a password.

Enter a password and tap **WMA settings** (📖 [102](#)). Passwords may be from 8 to 63 characters long.



6 Enable wireless security.

Tap **Settings**. A confirmation dialog will be displayed; tap **OK**.



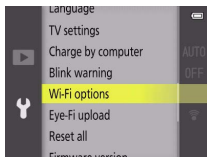
The iOS device may prompt you for this password the next time you connect to the camera via Wi-Fi.

Cameras with Built-in Wi-Fi

Wireless security can be enabled from the camera Wi-Fi options menu or using the Wi-Fi options item in the setup menu. The example below shows the menus for the COOLPIX S5200.

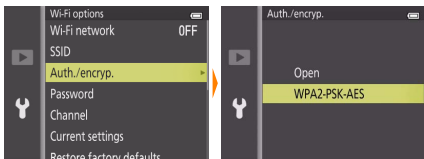
1 Select Wi-Fi options.

Highlight **Wi-Fi options** in the camera setup menu and press **OK**.



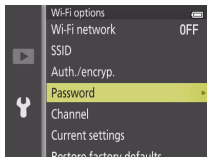
2 Enable encryption.

Select **Auth./encryp.** to display encryption options. Highlight **WPA2-PSK-AES** and press **OK** to return to the Wi-Fi options menu.



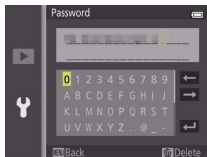
3 Select Password.

Highlight **Password** and press **OK**.



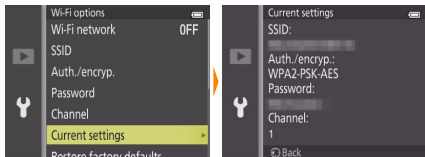
4 Enter a password.

Enter a password and press **Return**. The password may be between 8 and 16 characters long. The iOS device may prompt you to enter the password the next time you connect to the camera.



Viewing Wireless Security Settings

To view the current password and authentication/encryption settings, highlight **Current settings** in the Wi-Fi options menu and press **OK**.



☑ Security

Although one of the benefits of a wireless-enabled device is that it allows others to freely connect for the wireless exchange of data anywhere within its range, the following may occur if security is not enabled:

- **Data theft:** Malicious third-parties may intercept wireless transmissions to steal user IDs, passwords, and other personal information.
- **Unauthorized access:** Unauthorized users may gain access to the network and alter data or perform other malicious actions. Note that due to the design of wireless networks, specialized attacks may allow unauthorized access even when security is enabled.

Taking Photos

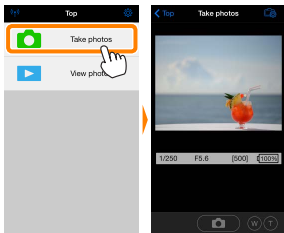
Take pictures remotely from the iOS device, or take pictures with the camera and save them to the iOS device.

Remote Photography

Follow the steps below to take photos from the iOS device.

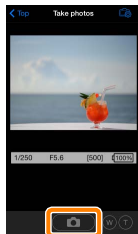
1 Tap Take photos.

The camera viewfinder will go dark and the iOS device will display the view through the camera lens.



2 Tap the shutter icon.


The shutter will be released after you remove your finger from the icon and the camera focuses; the resulting photo is first saved to the camera memory card and then downloaded to the iOS device. There is no need to point the iOS device at the camera.



✔ Remote Photography


Remote photography ends automatically when the battery in the camera or iOS device runs low. Note that using remote photography for an extended period may cause the camera's internal temperature to rise; if necessary, remote photography will end automatically to minimize damage to camera circuits.

The iOS device can not be used to adjust camera settings; use camera controls to adjust settings before starting Step 1. Regardless of the release mode selected with the camera, only one picture will be taken each time you tap the shutter icon. Note that the display may not update smoothly depending on the device and network conditions.

Regardless of the settings selected with the camera, pictures will be taken in  (auto) mode using target finding autofocus. The focus point is not displayed.

The Remote Photography Display

Top: Return to the top display.

: Display the following photography-related options.

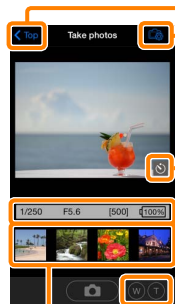
- **Shoot***: Choose whether to take pictures using the iOS device (**WMU**) or the camera (**Camera**).
- **Download after shooting**: Choose whether pictures are automatically downloaded to the iOS device. Available only when **WMU** is selected for **Shoot**.
- **Self-timer**: If **On** is selected, the camera shutter will be released 2 s after you tap the shutter icon. The timer turns off automatically after the shutter is released.

Self-timer icon: Displayed when the self-timer is on.

Camera settings: Shutter speed, aperture, etc. Not displayed when device is in landscape orientation.

Optical zoom: Tap **T** to zoom in, **W** to zoom out.

Thumbnail area: Downloaded pictures.

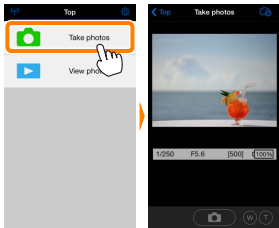


* Compatible cameras only.

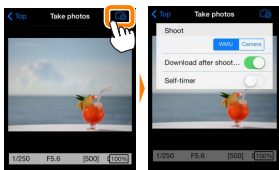
Downloading Photos as They Are Taken (Supported Cameras Only)

If the camera supports photo capture, you have the option of saving new photos to the iOS device.

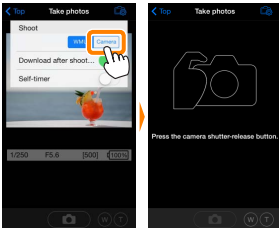
1 Tap Take photos.



2 Tap .



3 Tap Camera.



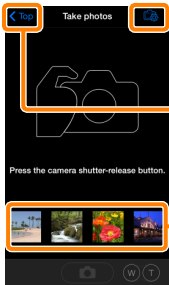
4 Take photos.


Use the camera to frame and shoot photos. Photos are downloaded to the iOS device after being saved to the camera memory card.



The Photo Capture Display

The photo capture display is shown below.



: Display **Shoot** options and choose whether to take pictures using the iOS device (**WMU**) or the camera (**Camera**).

Top: Return to the top display.

Thumbnail area: Downloaded pictures.

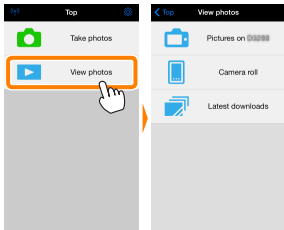
Viewing Photos

Tap **View photos** to view the pictures stored on the iOS device. You can also view the pictures on the camera memory card and download selected images to the iOS device.

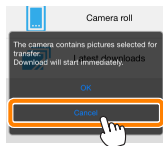
Viewing Pictures

View the pictures in camera memory or on the iOS device.

1 Tap **View photos**.

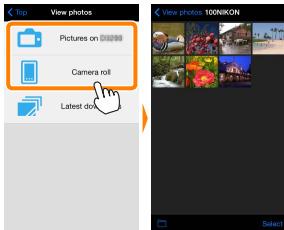


If the camera has an option that can be used to select pictures for transfer, a confirmation will be displayed if any images are currently selected. Tap **Cancel** to view pictures.



2 Choose a device.

Tap **Pictures on camera** to view the pictures on the camera memory card, **Camera roll** to view the pictures stored in the camera roll on the iOS device. The pictures will be displayed as small “thumbnail” images.



3 View pictures.

Tap a thumbnail to display the picture full frame. You can then swipe left or right to view additional pictures, or tap **i** to view information about the current image.




❑ Movies

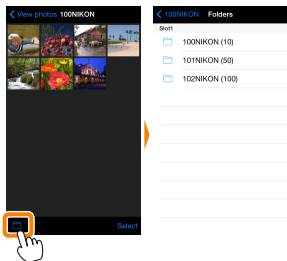
The Wireless Mobile Utility can not be used to view or download movies.

❑ Deleting Pictures

Pictures can not be deleted using the Wireless Mobile Utility, but pictures can be deleted from the camera roll on the iOS device.

❑ Choosing a Folder

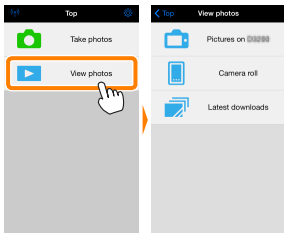
The iOS device will either show a folder list or display the pictures on the camera memory card as small “thumbnail” images. When thumbnails are displayed, the folders can be viewed by tapping the  icon, while folders are displayed, you can tap a folder to view its contents in a thumbnail list.



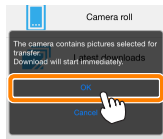
Downloading Existing Pictures

Download pictures to the camera roll on the iOS device.

1 Tap View photos.

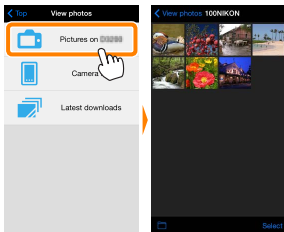


If the camera has an option that can be used to select pictures for transfer, a confirmation will be displayed if any images are currently selected. Tap **OK** to begin download.



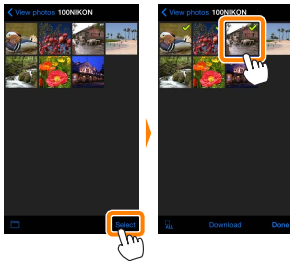
2 Tap Pictures on camera.

Tap **Pictures on camera** to view the pictures on the camera.

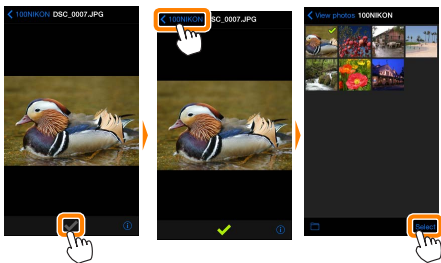


3 Select pictures for download.

Tap **Select** and then thumbnails to select or deselect (to deselect all pictures, tap **All**). Selected pictures are indicated by a check mark.



Alternatively, you can select pictures by tapping a picture in the thumbnail list to display it full frame and then tapping the check mark to select or deselect. Swipe left or right to view additional pictures. After selecting the desired pictures, tap the folder name to return to the thumbnail list and then tap **Select**.



❑ Dropped Connections

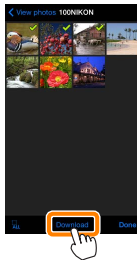
If the wireless connection is lost while a picture is being downloaded, the picture will not be saved to the iOS device (connection loss may occur if, for example, the camera turns off during download). Any pictures downloaded before the connection was interrupted are unaffected.

❑ Downloading Existing Pictures

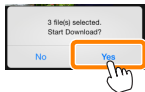
NEF (RAW) images are converted to JPEG format; if the images were recorded using an NEF (RAW) + JPEG option, only the JPEG copy will be downloaded. 3D images are converted to 2D JPEG images. Exif data will be adapted to iOS specifications.

4 Tap Download.

Tap **Download** to download the selected pictures to the camera roll on the iOS device.



If multiple pictures are selected, a confirmation dialog will be displayed; tap **Yes** to download the pictures at the size selected for **Image size** in the **Settings** menu (page [101](#)).



If only one picture is selected, you will be prompted to choose the size at which the picture will be copied to the iOS device. Choose a size (page [101](#)) and then tap **Download** to download the picture.

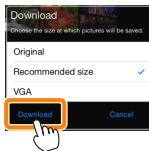
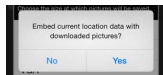


Image Size

Regardless of the size selected, pictures may sometimes be downloaded at their original size.

Location Data

The options shown at right will be displayed if **Settings > Embed location data > Take photos** is enabled (page [102](#)).



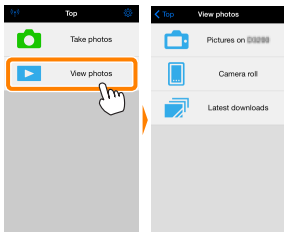
Latest Downloads

Tap **Latest downloads** to view the 12 most recently downloaded pictures at their original size and in their original format (note that 3D images are displayed in JPEG format and not as 3D images). Location data are not included with the files in "Latest downloads", regardless of the option selected for **Settings > Embed location data**.

Sharing Pictures

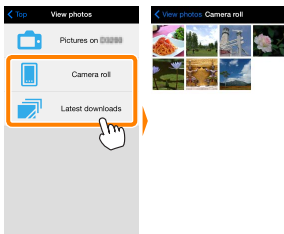
Connect to the Internet before sharing pictures via third-party apps or social networking sites or other services. If you are currently connected to the camera via Wi-Fi, end the connection and connect to a network with Internet access.

1 Tap View photos.



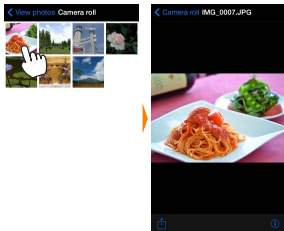
2 Choose Camera roll or Latest downloads.

Tap **Camera roll** to view the pictures already downloaded to the iOS camera roll.




3 View pictures.

Tap a thumbnail to view the picture full frame.




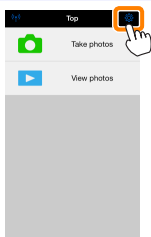
4 Tap .

After displaying a picture you want to share, tap  and choose from a list of picture-sharing apps and functions (the specific contents of the list vary from device to device).



Wireless Mobile Utility Options

The options listed below can be accessed by tapping the  icon in the Wireless Mobile Utility top display.



Connection Status

Option	Description
Camera	The model name and battery level for the camera currently connected.
Wireless Mobile Adapter	View the wireless mobile adapter product name and firmware version. Not available with cameras that feature built-in Wi-Fi.

Settings

Option	Description
Synchronize clock	Synchronize the camera clock with the iOS device.
Set camera clock	Synchronize the camera clock with the iOS device.
Set automatically	If On is selected, the camera clock will automatically be synchronized with the iOS device when a connection is established.
Thumbnails	Choose the size of the thumbnails in the playback display.
Image size	When downloading multiple images, select Recommended size or VGA to copy images at sizes approximately equivalent to 1920 × 1080 or 640 × 480, respectively.

Option	Description
WMA settings (Wireless Mobile Adapter settings)	Adjust network settings for the wireless mobile adapter. Not available with cameras that feature built-in Wi-Fi.
SSID	Choose an SSID for the wireless mobile adapter. The iOS device displays the SSID when you connect to the network manually.
Authentication	Choose the authentication method used for connection to the network.
Password	Enter a password. The password type is selected using Advanced settings > Password entry : choose ASCII for an 8- to 63-character alphanumeric password, HEX for a 64-digit hexadecimal password.
Channel	Choose the wireless channel used by the network.
Auto power-off delay	Choose the delay before the wireless mobile adapter enters sleep when there is no wireless connection.
Advanced settings	<ul style="list-style-type: none"> • Password entry: Choose the password type. • Sub-net mask: Enter a subnet mask. • DHCP server IP address: Enter the wireless mobile adapter IP address. • DHCP client IP address: Enter the iOS device IP address.
Format settings	Restore default settings.
Embed location data	Choose whether to embed iOS location data in pictures not already containing location data provided by the camera. Note that devices not equipped with GPS or comparable location data functions may fail to supply the correct location.

Battery Warning Level

Remote photography will end automatically when the camera or iOS device battery reaches the selected level.

Help

Option	Description
Instructions	View instructions for using the Wireless Mobile Utility.
Support websites	Access the support site for the Wireless Mobile Utility.
App version	View Wireless Mobile Utility version information.

Terms of Use

View the Wireless Mobile Utility terms of use.

Trademark Information

Wi-Fi is a registered trademark of the Wi-Fi Alliance. IOS is a trademark or registered trademark of Cisco in the U.S.A. and other countries and is used under license. All other trade names mentioned in this manual are the trademarks or registered trademarks of their respective holders.