

D3500

User's Manual

- Read this manual thoroughly before using the camera.
- To ensure proper use of the camera, be sure to read "For Your Safety" (overleaf).
- After reading this manual, keep it in a readily accessible place for future reference.

No reproduction in any form of this manual, in whole or in part (except for brief quotation in critical articles or reviews), may be made without written authorization from NIKON CORPORATION.

D3500 Model Name: N1718
Nikon User Support for India and Australia
 Contact a Nikon representative for technical assistance with the operation of your Nikon product or products. For information on the Nikon representatives in your area, visit <https://www.nikon-asia.com/support/>.

NIKON CORPORATION
 © 2018 Nikon Corporation



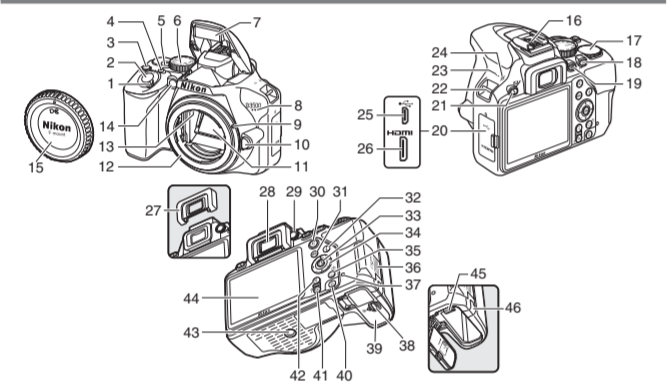
Printed in Thailand
 GMB44211-02 En

Package Contents

- D3500 camera
- AN-DC3 strap
- DK-25 rubber eyecup
- User's Manual (this sheet) (comes attached to camera)
- BF-1B body cap
- Warranty
- EN-EL14a rechargeable Li-ion battery (with terminal cover)
- MH-24 battery charger (plug adapter supplied in countries or regions where required; shape depends on country of sale)

Memory cards are sold separately. Purchasers of lens kits should confirm that the package contains a lens (manuals for the lens may also be provided).

A The Camera Body



- | | |
|--|---|
| 1 Power switch | 24 Focal plane mark (→) |
| 2 Shutter-release button | 25 USB connector |
| 3 button | 26 HDMI connector |
| 4 Movie-record button | 27 Rubber eyecup (comes attached to camera) |
| 5 Live view switch | 28 Viewfinder eyepiece |
| 6 Mode dial | 29 Diopter adjustment control |
| 7 Built-in flash | 30 button |
| 8 Microphone (monaural) | 31 MENU button |
| 9 Mounting mark | 32 button |
| 10 Lens release button | 33 (OK) button |
| 11 Mirror | 34 Multi selector |
| 12 Lens mount | 35 button |
| 13 CPU contacts | 36 Memory card slot cover |
| 14 AF-assist illuminator | 37 Memory card access lamp |
| 15 Self-timer lamp | 38 Battery-chamber cover latch |
| 16 Red-eye reduction lamp | 39 Battery-chamber cover |
| 17 Body cap | 40 button |
| 18 Accessory shoe (for optional flash units) | 41 button |
| 19 Command dial | 42 button |
| 20 button | 43 Tripod socket |
| 21 (information) button | 44 Monitor |
| 22 Connector cover | 45 Battery latch |
| 23 button | 46 Power connector cover for optional power connector |
| 24 Eyelets for camera strap | |
| 25 Speaker | |

The Multi Selector

In this manual, operations using the multi selector are represented by icons.

- : Press the multi selector up
- : Press the multi selector down
- : Press the multi selector left
- : Press the multi selector right
- button: select highlighted item

GUIDE Mode

When the mode dial is rotated to **GUIDE**, you can shoot, view, retouch, and delete photographs and set up the camera using a convenient on-screen guide. See the online camera manual for more information.

Camera Manuals

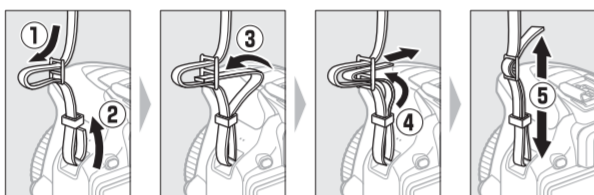
The following manuals are available for your Nikon camera:

- **The User's Manual**
The *User's Manual* (this manual) describes basic shooting and playback.
- **Online Manuals**
More detailed instructions are available on the Nikon website.
 - To download manuals in pdf format, visit the Nikon Download Center.
<https://downloadcenter.nikonimglib.com/en/products/471/D3500.html>
 - To view manuals online in html format, visit:
<https://onlinemanual.nikonimglib.com/d3500/en/>

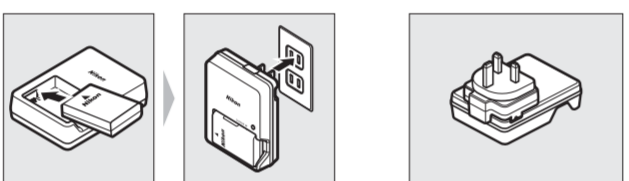
B Quick Start Guide

Attach the Camera Strap

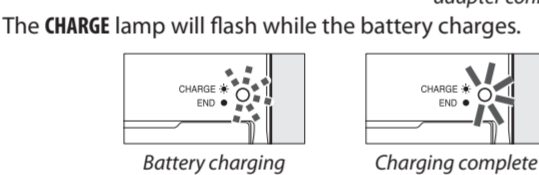
A strap is supplied with the camera; additional straps are available separately. Attach the strap securely to the two camera eyelets.



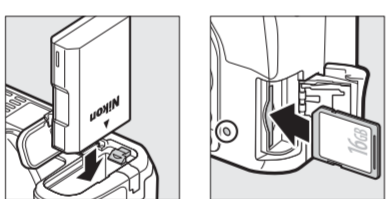
Charge the Battery



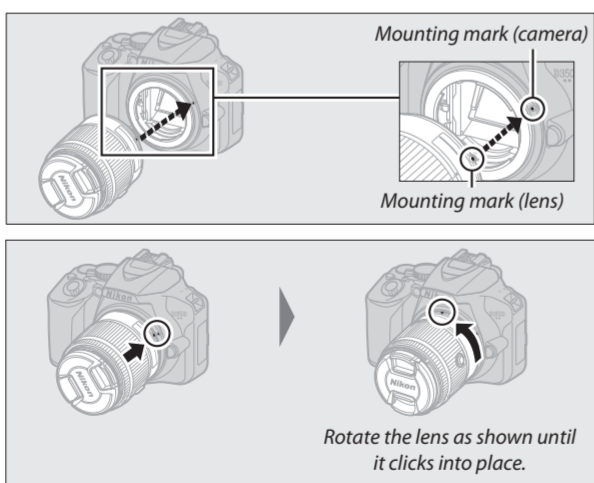
In some countries or regions, charger may be supplied with adapter connected.



Insert the Battery and a Memory Card



Attach a Lens



Lenses with Retractable Lens Barrel Buttons

Before using the camera, unlock and extend the lens. Keeping the retractable lens barrel button pressed (1), rotate the zoom ring as shown (2).

Retractable lens barrel button

Pictures cannot be taken when the lens is retracted; if an error message is displayed as a result of the camera having been turned on with the lens retracted, rotate the zoom ring until the message is no longer displayed.

Removing Lenses

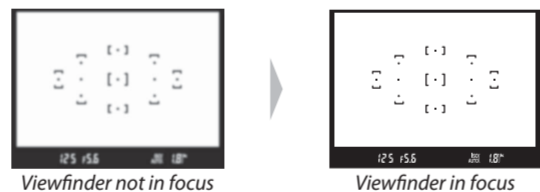
To remove the lens, turn the camera off and press and hold the lens-release button on the front of the camera while rotating the lens in the direction opposite that shown above.

Camera Setup

- 1 Turn the camera on.
A language-selection dialog will be displayed; press and to highlight a language and press to select. The languages available vary with the country or region of sale.
- 2 Set the camera clock.
After setting time zone, date format, and daylight saving time options, use the multi selector and button to set the camera clock.

Focus the Viewfinder

After removing the lens cap, rotate the diopter adjustment control until the focus points are in sharp focus. When operating the control with your eye to the viewfinder, be careful not to put your fingers or fingernails in your eye.



C "Point-and-Shoot" Modes (AUTO and)

- 1 Rotate the mode dial to **AUTO** or .
- 2 Frame the photograph.

- 3 Press the shutter-release button halfway to focus.
- 4 Smoothly press the shutter-release button the rest of the way down to take the photograph.

D Recording Movies

- 1 Rotate the live view switch.
The view through the lens will be displayed in the monitor.
 - 2 Press the shutter-release button halfway to focus.
 - 3 Press the movie-record button to start recording.
-
- Live view switch
- Movie-record button
- Time remaining
- A recording indicator and the time available are displayed in the monitor.
-
- Recording indicator
- 4 Press the movie-record button again to end recording.
 - 5 Rotate the live view switch to exit live view.

E Viewing Photographs

Pressing displays a picture in the monitor.

Movies are indicated by a icon. Press to start playback.

button

F Deleting Unwanted Photographs

Note that photographs cannot be recovered once deleted.

- Press the button. A confirmation dialog will be displayed; press the button again to delete the image and return to playback.
- To exit without deleting the picture, press .

button

G Camera Menus

Most shooting, playback, and setup options can be accessed from the camera menus. To view the menus, press the MENU button.

Tabs

Choose from the following menus:

- Playback
- Shooting
- Setup
- Retouch
- Recent Settings

Slider shows position in current menu.

Current settings are shown by icons.

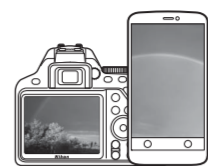
Menu options
Options in current menu.

Help icon

If the help icon is displayed, you can press the (?) button to view help for the currently selected item.

H Connecting to Smart Devices with SnapBridge

Install the SnapBridge app to your smart device to download pictures from the camera or control the camera remotely. For more information, see the online camera manual.



Readying the Smart Device

Before connecting, ready your smart device by installing the SnapBridge app and enabling Bluetooth.

- 1 Search for "snapbridge" on the Apple App Store® (iOS) or Google Play™ (Android™) and install the SnapBridge app.

Information on supported operating systems is available from the download site. This camera is not compatible with the SnapBridge 360/170 app.

- 2 Enable Bluetooth on the smart device. Note that the actual connection to the camera will be made using the SnapBridge app; do not attempt to connect using the Settings app on your device.

Pairing and Connecting

Before pairing, confirm that there is space available on the camera memory card. To prevent unexpected interruptions, you should also check that the camera battery is fully charged.

- 1 Highlight **Connect to smart device** in the setup menu and press .
 - 2 Follow the instructions displayed on the camera and in the SnapBridge app, to complete setup.
- See SnapBridge online help for detailed setup information (additional information is also available in the online camera manual). For information on SnapBridge online help, visit: <https://nikonimglib.com/snbr/onlinehelp/en/index.html>

Caring for the Camera

Storage

When the camera will not be used for an extended period, turn the camera off and remove the battery. Do not store in locations that:

- are poorly ventilated or subject to humidities of over 60%
- are next to equipment that produces strong electromagnetic fields, such as televisions or radios
- are exposed to temperatures above 50 °C (122 °F) or below -10 °C (14 °F)

Cleaning

Camera Body

Use a blower to remove dust and lint, then wipe gently with a soft, dry cloth. After using the camera at the beach or seaside, wipe off sand or salt with a cloth lightly dampened in distilled water and dry thoroughly. Important: Dust or other foreign matter inside the camera may cause damage not covered under warranty.

Lens, Mirror, and Viewfinder

These glass elements are easily damaged. Remove dust and lint with a blower. If using an aerosol blower, keep the can vertical to prevent the discharge of liquid. To remove fingerprints and other stains, apply a small amount of lens cleaner to a soft cloth and clean with care.

Monitor

Remove dust and lint with a blower. When removing fingerprints and other stains, wipe the surface lightly with a soft cloth or chamois leather. Do not apply pressure, as this could result in damage or malfunction.

* Do not use alcohol, thinner, or other volatile chemicals.

Troubleshooting

Battery/Display

The camera is on but does not respond: Wait for recording to end. If the problem persists, turn the camera off. If the camera does not turn off, remove and reinsert the battery.

Viewfinder is out of focus: Focus the viewfinder using the diopter adjustment control.

Shooting (All Modes)

Shutter-release disabled:

- Memory card is locked, full, or not inserted.
- Camera is not in focus.

Photos are out of focus: The camera may be unable to focus on subjects that are low in contrast, dominated by regular geometric patterns, or dwarfed by objects in the background, or that include objects at different distances from the camera, areas of sharply contrasting brightness, or many fine details.

Playback

Cannot view pictures recorded with other cameras: Pictures recorded with other makes of camera may not be display correctly.

Some pictures are not displayed during playback: Select **All** for **Playback** folder.

Cannot delete picture: Memory card is locked.

Specifications	
■ Nikon D3500 Digital Camera	
Type	Single-lens reflex digital camera
Lens mount	Nikon F mount (with AF contacts)
Effective angle of view	Nikon DX format; focal length equivalent to approx. 1.5x that of lenses with FX format angle of view
Effective pixels	
Effective pixels	24.2 million
Image sensor	
Image sensor	23.5 × 15.6 mm CMOS sensor
Total pixels	24.78 million
Dust-reduction System	Image Dust Off reference data (Capture NX-D software required)
Storage	
Image size (pixels)	• 6000 × 4000 (Large; 24.0 M) • 4496 × 3000 (Medium; 13.5 M) • 2992 × 2000 (Small; 6.0 M)
File format	• NEF (RAW): 12 bit, compressed • JPEG: JPEG-Baseline compliant with fine (approx. 1 : 4), normal (approx. 1 : 8), or basic (approx. 1 : 16) compression • NEF (RAW)+JPEG: Single photograph recorded in both NEF (RAW) and JPEG formats
Picture Control System	Standard, Neutral, Vivid, Monochrome, Portrait, Landscape, Flat; selected Picture Control can be modified
Media	SD (Secure Digital) and UHS-I compliant SDHC and SDXC memory cards
File system	DCF 2.0, Exif 2.3, PictBridge
Viewfinder	
Viewfinder	Eye-level pentamirror single-lens reflex viewfinder
Frame coverage	Approx. 95% horizontal and 95% vertical
Magnification	Approx. 0.85x (50 mm f/1.4 lens at infinity, -1.0 m ⁻¹)
Eye point	18 mm (-1.0 m ⁻¹ ; from center surface of viewfinder eyepiece lens)
Diopter adjustment	-1.7--+0.5 m ⁻¹
Focusing screen	Type B BriteView Clear Matte Mark VII screen
Reflex mirror	Quick return
Lens aperture	Instant return, electronically controlled
Lens	
Autofocus support	Autofocus is available with AF-P and type E and G AF-S lenses.
Shutter	
Type	Electronically-controlled vertical-travel focal-plane shutter
Speed	1/4000-30 s in steps of 1/3 EV; Bulb; Time
Flash sync speed	X = 1/200 s; synchronizes with shutter at 1/200 s or slower
Release	
Release mode	(single frame), (continuous), (quiet shutter release), (self-timer)
Frame advance rate	Up to 5 fps Note: Frame rates assume manual focus, manual or shutter-priority auto exposure, a shutter speed of 1/250 s or faster, and other settings at default values.
Self-timer	2 s, 5 s, 10 s, 20 s; 1-9 exposures
Exposure	
Metering mode	TTL exposure metering using 420-pixel RGB sensor
Metering method	• Matrix metering: 3D color matrix metering II • Center-weighted metering: Weight of 75% given to 8-mm circle in center of frame • Spot metering: Meters 3.5-mm circle (about 2.5% of frame) centered on selected focus point
Range (ISO 100, f/1.4 lens, 20 °C/68 °F)	• Matrix or center-weighted metering: 0-20 EV • Spot metering: 2-20 EV
Exposure meter coupling	CPU
Mode	Auto modes (auto; auto, flash off); programmed auto with flexible program (P); shutter-priority auto (S); aperture-priority auto (A); manual (M); scene modes (portrait; sports; close up; night portrait); special effects modes (night vision; vl super vivid; pop; photo illustration; toy camera effect; miniature effect; selective color; silhouette; high key; low key)
Exposure compensation	Can be adjusted by -5--+5 EV in increments of 1/3 EV in P, S, A, M, scene, and modes
Exposure lock	Luminosity locked at detected value with (O-N) button
ISO sensitivity (Recommended Exposure Index)	ISO 100-25600 in steps of 1 EV. Auto ISO sensitivity control available
Active D-Lighting	On, off

Focus	
Autofocus	Nikon Multi-CAM 1000 autofocus sensor module with TTL phase detection, 11 focus points (including one cross-type sensor), and AF-assist illuminator (range approx. 0.5–3 m/1 ft 8 in.–9 ft 10 in.)
Detection range	−1+19 EV (ISO 100, 20°C/68°F)
Lens servo	<div> <ul style="list-style-type: none">Autofocus (AF): Single-servo AF (AF-S); continuous-servo AF (AF-C); auto AF-S/AF-C selection (AF-A); predictive focus tracking activated automatically according to subject status Manual focus (MF): Electronic rangefinder can be used </div>
Focus point	Can be selected from 11 focus points
AF-area mode	Single-point AF; dynamic-area AF; auto-area AF; 3D-tracking (11 points)
Focus lock	Focus can be locked by pressing shutter-release button halfway (single-servo AF) or by pressing ⓘ (○) button
Flash	
Built-in flash	Ⓛ , Ⓜ , Ⓛ , Ⓜ , Ⓛ , Ⓜ , Ⓛ , Ⓜ , Ⓛ , Ⓜ , Ⓛ , Ⓜ , Ⓛ , Ⓜ , Ⓛ , Ⓜ , Ⓛ , Ⓜ , Ⓛ , Ⓜ : Auto flash with auto pop-up Ⓛ , Ⓜ , Ⓛ , Ⓜ , Ⓛ , Ⓜ , Ⓛ , Ⓜ : Manual pop-up with button release
Guide Number	Approx. 7/22, 8/26 with manual flash (m/ft, ISO 100, 20°C/68°F)
Flash control	TTL:i-TTL flash control using 420-pixel RGB sensor is available with built-in flash; i-TTL: balanced fill-flash for digital SLR is used with matrix and center-weighted metering, standard i-TTL flash for digital SLR with spot metering
Flash mode	Auto, auto with red-eye reduction, auto slow sync, auto slow sync with red-eye reduction, fill-flash, red-eye reduction, slow sync, slow sync with red-eye reduction, rear-curtain with slow sync, rear-curtain sync, off
Flash compensation	Can be adjusted by −3+1 EV in increments of 1⁄3 EV in Ⓛ , Ⓜ , Ⓛ , Ⓜ , and scene modes
Flash-ready indicator	Lights when built-in flash or optional flash unit is fully charged; flashes after flash is fired at full output
Accessory shoe	ISO 518 hot-shoe with sync and data contacts and safety lock
Nikon Creative Lighting System (CLS)	i-TTL flash control, optical Advanced Wireless Lighting, Color Information Communication, AF-assist for multi-area AF
Sync terminal	AS-15 sync terminal adapter (available separately)
White balance	
White balance	Auto, incandescent, fluorescent (7 types), direct sunlight, flash, cloudy, shade, preset manual, all except preset manual with fine-tuning
Live view	
Lens servo	<div> <ul style="list-style-type: none">Autofocus (AF): Single-servo AF (AF-S); full-time-servo AF (AF-F) Manual focus (MF) </div>
AF-area mode	Face-priority AF, wide-area AF, normal-area AF, subject-tracking AF
Autofocus	Contrast-detect AF anywhere in frame (camera selects focus point automatically when face-priority AF or subject-tracking AF is selected)
Automatic scene selection	Available in Ⓛ and Ⓞ modes
Movie	
Metering	TTL exposure metering using main image sensor
Metering method	Matrix
Frame size (pixels) and frame rate	<div> <ul style="list-style-type: none">1920 × 1080; 60p (progressive), 50p, 30p, 25p, 24p 1280 × 720; 60p, 50p <p>Actual frame rates for 60p, 50p, 30p, 25p, and 24p are 59.94, 50, 29.97, 25, and 23.976 fps respectively; options support both ★ high and normal image quality</p> </div>
File format	MOV
Video compression	H.264/MPEG-4 Advanced Video Coding
Audio recording format	Linear PCM
Audio recording device	Built-in monaural microphone; sensitivity adjustable
ISO sensitivity	ISO 100–25600
Monitor	
Monitor	7.5-cm (3-in.), approx. 921k-dot (VGA) TFT LCD with 170° viewing angle, approx. 100% frame coverage, and brightness adjustment
Playback	
Playback	Full-frame and thumbnail (4, 9, or 72 images or calendar) playback with playback zoom, playback zoom cropping, playback face zoom, movie playback, photo and/or movie slide shows, histogram display, highlights, photo information, location data display, auto image rotation, picture rating, and image comment (up to 36 characters)
Interface	
USB	Hi-Speed USB with Micro-USB connector; connection to built-in USB port is recommended
HDMI output	Type C HDMI connector
Bluetooth	
Communication protocols	Bluetooth Specification Version 4.1
Operating frequency	<div> <ul style="list-style-type: none">Bluetooth: 2402–2480 MHz Bluetooth Low Energy: 2402–2480 MHz </div>
Maximum output power	<div> <ul style="list-style-type: none">Bluetooth: 1.2 dBm (EIRP) Bluetooth Low Energy: 1.2 dBm (EIRP) </div>
Range (line of sight)	Approximately 10 m (32 ft) without interference; range may vary with signal strength and presence or absence of obstacles
Power source	
Battery	One EN-EL14a rechargeable Li-ion battery
AC adapter	EH-5c/EH-5b AC adapter; requires EP-5A power connector (available separately)
Tripod socket	
Tripod socket	1⁄4 in. (ISO 1222)
Dimensions/weight	
Dimensions (W × H × D)	Approx. 124 × 97 × 69.5 mm (4.9 × 3.9 × 2.8 in.)
Weight	Approx. 415 g (14.7 oz) with battery and memory card but without body cap; approx. 365 g/12.9 oz (camera body only)

Operating environment	
Temperature	0 °C−40 °C (+32 °F−104 °F)
Humidity	85% or less (no condensation)
■ MH-24 Battery Charger	
Rated input	AC 100–240 V, 50/60 Hz, 0.2 A maximum
Rated output	DC 8.4 V/0.9 A
Supported batteries	Nikon EN-EL14a rechargeable Li-ion batteries
Charging time	Approx. 1 hour and 50 minutes at an ambient temperature of 25 °C (77 °F) when no charge remains
Operating temperature	0 °C−40 °C (+32 °F−104 °F)
Dimensions (W × H × D)	Approx. 70 × 26 × 97 mm (2.8 × 1.0 × 3.8 in.), excluding plug adapter
Weight	Approx. 96 g (3.4 oz), excluding plug adapter

The symbols on this product represent the following:

~AC, ==DC, ⊠Class II equipment (The construction of the product is double-insulated.)

■ EN-EL14a Rechargeable Li-ion Battery

Type	Rechargeable lithium-ion battery
Rated capacity	7.2 V/1230 mAh
Operating temperature	0°−40 °C (+32 °F−104 °F)
Dimensions (W × H × D)	Approx. 38 × 5.3 × 14 mm (1.5 × 2.1 × 0.6 in.)
Weight	Approx. 49 g (1.7 oz), excluding terminal cover

Recycle rechargeable batteries in accord with local regulations, being sure to first insulate the terminals with tape.

Ⓛ Battery Life	
<div> <p>The movie footage or number of shots that can be recorded with fully-charged batteries varies with the condition of the battery, temperature, the interval between shots, and the length of time menus are displayed. Sample figures for EN-EL14a (1230 mAh) batteries are given below.</p> <ul style="list-style-type: none">Photographs, single-frame release mode (CIPA standard): Approximately 1550 shots Movies: Approximately 75 minutes at 1080/60p </div>	

■ Lenses

This section provides lens specifications for purchasers of lens kits. Note that some of the lenses below may not be available in all countries or regions.

AF-P DX NIKKOR 18–55mm f/3.5–5.6G VR Lenses

Type	Type G AF-P DX lens with built-in CPU and F mount
Focal length	18–55 mm
Maximum aperture	f/3.5–5.6
Lens construction	12 elements in 9 groups (2 aspherical lens elements)
Angle of view	76°–28° 50′
Focal length scale	Graduated in millimeters (18, 24, 35, 45, 55)
Distance information	Output to camera
Zoom	Manual zoom using independent zoom ring
Focusing	Autofocus controlled by stepping motor; separate focus ring for manual focus
Vibration reduction	Lens shift using voice coil motors (VCMs)
Minimum focus distance	0.25 m (0.9 ft) from focal plane at all zoom positions
Diaphragm blades	7 (rounded diaphragm opening)
Diaphragm	Fully automatic
Aperture range	<div> <ul style="list-style-type: none">18 mm focal length: f/3.5–22 55 mm focal length: f/5.6–38 <p>The minimum aperture displayed may vary depending on the size of the exposure increment selected with the camera.</p> </div>
Metering	Full aperture
Filter-attachment size	55 mm (P = 0.75 mm)
Dimensions	Approx. 64.5 mm maximum diameter × 62.5 mm (distance from camera lens mount flange when lens is retracted)
Weight	Approx. 205 g (7.3 oz)

AF-P DX NIKKOR 70–300mm f/4.5–6.3G ED VR and AF-P DX NIKKOR 70–300mm f/4.5–6.3G ED Lenses

Type	Type G AF-P DX lens with built-in CPU and F mount
Focal length	70–300 mm
Maximum aperture	f/4.5–6.3
Lens construction	14 elements in 10 groups (including 1 ED lens element)
Angle of view	22° 50′–5° 20′
Focal length scale	Graduated in millimeters (70, 100, 135, 200, 300)
Distance information	Output to camera
Zoom	Manual zoom using independent zoom ring
Focusing	Autofocus controlled by stepping motor; separate focus ring for manual focus
Vibration reduction (AF-P DX NIKKOR 70–300mm f/4.5–6.3G ED VR only)	Lens shift using voice coil motors (VCMs)
Minimum focus distance	1.1 m (3.7 ft) from focal plane at all zoom positions
Diaphragm blades	7 (rounded diaphragm opening)
Diaphragm	Fully automatic
Aperture range	<div> <ul style="list-style-type: none">70 mm focal length: f/4.5–22 300 mm focal length: f/6.3–32 <p>The minimum aperture displayed may vary depending on the size of the exposure increment selected with the camera.</p> </div>
Metering	Full aperture
Filter-attachment size	58 mm (P = 0.75 mm)
Dimensions	Approx. 72 mm maximum diameter × 125 mm (distance from camera lens mount flange)
Weight	<div> <ul style="list-style-type: none">AF-P DX NIKKOR 70–300mm f/4.5–6.3G ED VR: Approx. 415 g (14.7 oz) AF-P DX NIKKOR 70–300mm f/4.5–6.3G ED: Approx. 400 g (14.2 oz) </div>

<div> <ul style="list-style-type: none">Unless otherwise stated, all measurements are performed in conformity with Camera and Imaging Products Association (CIPA) standards or guidelines. All figures are for a camera with a fully-charged battery. The sample images displayed on the camera and the images and illustrations in the manual are for expository purposes only. Nikon reserves the right to change the appearance and specifications of the hardware and software described in this manual at any time and without prior notice. Nikon will not be held liable for damages that may result from any mistakes that this manual may contain. </div>	
---	--

■ Trademark Information

iOS is a trademark or registered trademark of Cisco Systems, Inc., in the United States and/or other countries and is used under license. Windows is either a registered trademark or a trademark of Microsoft Corporation in the United States and/or other countries. Mac, macOS, OS X, Apple*, App Store*, the Apple logo, iPhone*, iPad*, and iPod touch* are trademarks of Apple Inc. registered in the U.S. and/or other countries. Android, Google Play and the Google Play logo are trademarks of Google LLC. The Android robot is reproduced or modified from work created and shared by Google and used according to terms described in the Creative Commons 3.0 Attribution License. PictBridge logo is a trademark. The SD, SDHC, and SDXC logos are trademarks of the SD-3C, LLC. HDMI, the HDMI logo and High-Definition Multimedia Interface are trademarks or registered trademarks of HDMI Licensing LLC.

HDMI

The Bluetooth® word mark and logos are registered trademarks owned by Bluetooth SIG, Inc. and any use of such marks by Nikon Corporation is under license.

All other trade names mentioned in this manual or the other documentation provided with your Nikon product are trademarks or registered trademarks of their respective holders.

<div> <p>Use of the Made for Apple badge means that an accessory has been designed to connect specifically to the Apple products identified in the badge, and has been certified by the developer to meet Apple performance standards. Apple is not responsible for the operation of this device or its compliance with safety and regulatory standards. Please note that the use of this accessory with an Apple product may affect wireless performance.</p> </div>	
---	--

■ Conformity Marking

The standards with which the camera complies can be viewed using the **Conformity marking** option in the setup menu.

■ FreeType License (FreeType2)

Portions of this software are copyright © 2012 The FreeType Project (<https://www.freetype.org>). All rights reserved.

■ MIT license (HarfBuzz)

Portions of this software are copyright © 2018 The HarfBuzz Project (<https://www.freedesktop.org/wiki/Software/HarfBuzz>). All rights reserved.

For Your Safety

To prevent damage to property or injury to yourself or to others, read "For Your Safety" in its entirety before using this product.

Keep these safety instructions where all those who use this product will read them.

<div> <div>⚠ DANGER: Failure to observe the precautions marked with this icon carries a high risk of death or severe injury.</div> </div>	
<div> <div>⚠ WARNING: Failure to observe the precautions marked with this icon could result in death or severe injury.</div> </div>	
<div> <div>⚠ CAUTION: Failure to observe the precautions marked with this icon could result in injury or property damage.</div> </div>	

WARNING

- Do not use while walking or operating a vehicle.** Failure to observe this precaution could result in accidents or other injury.
- Do not disassemble or modify this product. Do not touch internal parts that become exposed as the result of a fall or other accident.** Failure to observe these precautions could result in electric shock or other injury.
- Should you notice any abnormalities such as the product producing smoke, heat, or unusual odors, immediately disconnect the battery or power source.** Continued operation could result in fire, burns or other injury.
- Keep dry. Do not handle with wet hands. Do not handle the plug with wet hands.** Failure to observe these precautions could result in fire or electric shock.
- Do not let your skin remain in prolonged contact with this product while it is on or plugged in.** Failure to observe this precaution could result in low-temperature burns.
- Do not use this product in the presence of flammable dust or gas such as propane, gasoline or aerosols.** Failure to observe this precaution could result in explosion or fire.
- Do not directly view the sun or other bright light source through the lens or camera.** Failure to observe this precaution could result in visual impairment.
- Do not aim the flash or AF-assist illuminator at the operator of a motor vehicle.** Failure to observe this precaution could result in accidents.

- Keep this product out of reach of children.** Failure to observe this precaution could result in injury or product malfunction. In addition, note that small parts constitute a choking hazard. *Should a child swallow any part of this product, seek immediate medical attention.*
- Do not entangle, wrap or twist the straps around your neck.** Failure to observe this precaution could result in accidents.
- Do not use batteries, chargers, or AC adapters not specifically designated for use with this product. When using batteries, chargers, and AC adapters designated for use with this product, do not:**
 - Damage, modify, forcibly tug or bend the cords or cables, place them under heavy objects, or expose them to heat or flame.
 - Use travel converters or adapters designed to convert from one voltage to another or with DC-to-AC inverters.

Failure to observe these precautions could result in fire or electric shock.
- Do not handle the plug when charging the product or using the AC adapter during thunderstorms.** Failure to observe this precaution could result in electric shock.
- Do not handle with bare hands in locations exposed to extremely high or low temperatures.** Failure to observe this precaution could result in burns, or frostbite.

CAUTION

- Do not leave the lens pointed at the sun or other strong light sources.** Light focused by the lens could cause fire or damage to product's internal parts. When shooting backlit subjects, keep the sun well out of the frame. Sunlight focused into the camera when the sun is close to the frame could cause fire.
- Turn this product off when its use is prohibited. Disable wireless features when the use of wireless equipment is prohibited.** The radio-frequency emissions produced by this product could interfere with equipment onboard aircraft or in hospitals or other medical facilities.
- Remove the battery and disconnect the AC adapter if this product will not be used for an extended period.** Failure to observe this precaution could result in fire or product malfunction.
- Do not fire the flash in contact with or in close proximity to the skin or objects.** Failure to observe this precaution could result in burns or fire.
- Do not leave the product where it will be exposed to extremely high or low temperatures, for an extended period such as in an enclosed automobile or in direct sunlight.** Failure to observe this precaution could result in fire or product malfunction.
- Do not transport cameras or lenses with tripods or similar accessories attached.** Failure to observe this precaution could result in injury or product malfunction.

⚠ DANGER (Batteries)
<div> <ul style="list-style-type: none">Do not mishandle batteries. Failure to observe the following precautions could result in the batteries leaking, overheating, rupturing, or catching fire: <ul style="list-style-type: none">Use only rechargeable batteries approved for use in this product. Do not expose batteries to flame or excessive heat. Do not disassemble. Do not short-circuit the terminals by touching them to necklaces, hairpins, or other metal objects. Do not expose batteries or the products in which they are inserted to powerful physical shocks. Charge only as indicated. Failure to observe this precaution could result in the batteries leaking, overheating, rupturing, or catching fire. If battery liquid comes into contact with the eyes, rinse with plenty of clean water and seek immediate medical attention. Delaying action could result in eye injuries. </div>

WARNING (Batteries)

- Keep batteries out of reach of children.** *Should a child swallow a battery, seek immediate medical attention.*
- Do not immerse batteries in water or expose to rain.** Failure to observe this precaution could result in fire or product malfunction. Immediately dry the product with a towel or similar object should it become wet.
- Discipline use immediately should you notice any changes in the batteries, such as discoloration or deformation. Cease charging EN-EL14a rechargeable batteries if they do not charge in the specified period of time.** Failure to observe these precautions could result in the batteries leaking, overheating, rupturing, or catching fire.
- When batteries are no longer needed, insulate the terminals with tape.** Overheating, rupture, or fire may result should metal objects come into contact with the terminals.
- If battery liquid comes into contact with a person's skin or clothing, immediately rinse the affected area with plenty of clean water.** Failure to observe this precaution could result in skin irritation.

Notices

- No part of the manuals included with this product may be reproduced, transmitted, transcribed, stored in a retrieval system, or translated into any language in any form, by any means, without Nikon's prior written permission.
- Nikon reserves the right to change the appearance and specifications of the hardware and software described in these manuals at any time and without prior notice.
- Nikon will not be held liable for any damages resulting from the use of this product.
- While every effort has been made to ensure that the information in these manuals is accurate and complete, we would appreciate it were you to bring any errors or omissions to the attention of the Nikon representative in your area (address provided separately).

Notice For Customers in Canada

CAN ICES-3 B / NMB-3 B

Notices for Customers in Europe

CAUTION: RISK OF EXPLOSION IF BATTERY IS REPLACED BY AN INCORRECT TYPE. DISPOSE OF USED BATTERIES ACCORDING TO THE INSTRUCTIONS.

This symbol indicates that electrical and electronic equipment is to be collected separately.

- The following apply only to users in European countries:
 - This product is designated for separate collection at an appropriate collection point. Do not dispose of as household waste.
 - Separate collection and recycling helps conserve natural resources and prevent negative consequences for human health and the environment that might result from incorrect disposal.
 - For more information, contact the retailer or the local authorities in charge of waste management.

This symbol on the battery indicates that the battery is to be collected separately.

- The following apply only to users in European countries:
 - All batteries, whether marked with this symbol or not, are designated for separate collection at an appropriate collection point. Do not dispose of as household waste.
 - For more information, contact the retailer or the local authorities in charge of waste management.

Notices for Customers in the U.S.A.

The Battery Charger
IMPORTANT SAFETY INSTRUCTIONS—SAVE THESE INSTRUCTIONS
DANGER—TO REDUCE THE RISK OF FIRE OR ELECTRIC SHOCK, CAREFULLY FOLLOW THESE INSTRUCTIONS
For connection to a supply not in the U.S.A., use an attachment plug adapter of the proper configuration for the power outlet; if needed, this power unit is intended to be correctly oriented in a vertical or floor mount position.

Federal Communications Commission (FCC) Radio Frequency Interference Statement
<div><div>Ⓡ</div><div>Nikon</div><div>D3500</div></div>

This equipment has been tested and found to comply with the limits for a Class B digital device, pursuant to Part 15 of the FCC rules. These limits are designed to provide reasonable protection against harmful interference in a residential installation. This equipment generates, uses, and can radiate radio frequency energy and, if not installed and used in accordance with the instructions, may cause harmful interference to radio communications. However, there is no guarantee that interference will not occur in a particular installation. If this equipment does cause harmful interference to radio or television reception, which can be determined by turning the equipment off and on, the user is encouraged to try to correct the interference by one or more of the following measures:

- Reorient or relocate the receiving antenna.
- Increase the separation between the equipment and receiver.
- Connect the equipment into an outlet on a circuit different from that to which the receiver is connected.

CONSULT the dealer or an experienced radio/television technician for help.
CAUTIONS
Modifications
The FCC requires the user to be notified that any changes or modifications made to this device that are not expressly approved by Nikon Corporation may void the user's authority to operate the equipment.
Interface cables
Use the interface cables sold or provided by Nikon for your equipment. Using other interface cables may exceed the limits of Class B Part 15 of the FCC rules.
Nikon Inc., 1300 Walt Whitman Road, Melville, New York 11747-3064, U.S.A. Tel.: 631-547-4200

Notice Concerning Prohibition of Copying or Reproduction

Note that simply being in possession of material that has been digitally copied or reproduced by means of a scanner, digital camera, or other device may be punishable by law.

- Items prohibited by law from being copied or reproduced**
 - Do not copy or reproduce paper money, coins, securities, government bonds, or local government bonds, even if such copies or reproductions are stamped "Sample."

The copying or reproduction of paper money, coins, or securities which are circulated in a foreign country is prohibited.

Unless the prior permission of the government has been obtained, the copying or reproduction of unused postage stamps or post cards issued by the government is prohibited.

The copying or reproduction of stamps issued by the government and of certified documents stipulated by law is prohibited.

• Cautions on certain copies and reproductions

The government has issued cautions on copies or reproductions of securities issued by private companies (shares, bills, checks, gift certificates, etc.), commuter passes, or coupon tickets, except when a minimum of necessary copies are to be provided for business use by a company. Also, do not copy or reproduce passports issued by the government, licenses issued by public agencies and private groups, ID cards, and tickets, such as passes and meal coupons.

• Comply with copyright notices

Under copyright law, photographs or recordings of copyrighted works made with the camera cannot be used without the permission of the copyright holder. Exceptions apply to personal use, but note that even personal use may be restricted in the case of photographs or recordings of exhibits or live performances.

Disposing of Data Storage Devices

Please note that deleting images or formatting memory cards or other data storage devices does not completely erase the original image data. Deleted files can sometimes be recovered from discarded storage devices using commercially available software, potentially resulting in the malicious use of personal image data. Ensuring the privacy of such data is the user's responsibility.

Before discarding a data storage device or transferring ownership to another person, erase all data using commercial deletion software, or format the device and then completely refill it with images containing no private information (for example, pictures of empty sky). Care should be taken to avoid injury when physically destroying data storage devices. Be sure to also replace any pictures selected for preset manual white balance.

Before discarding the camera or transferring ownership to another person, you should also use the **Reset all settings** option in the camera setup menu to delete network settings and other personal information.

AVC Patent Portfolio License

THIS PRODUCT IS LICENSED UNDER THE AVC PATENT PORTFOLIO LICENSE FOR THE PERSONAL AND NON-COMMERCIAL USE OF A CONSUMER TO (I) ENCODE VIDEO IN COMPLIANCE WITH THE AVC STANDARD ("AVC VIDEO") AND/OR (II) DECODE AVC VIDEO THAT WAS ENCODED BY A CONSUMER ENGAGED IN A PERSONAL AND NON-COMMERCIAL ACTIVITY AND/OR WAS OBTAINED FROM A VIDEO PROVIDER LICENSED TO PROVIDE AVC VIDEO. NO LICENSE IS GRANTED OR SHALL BE IMPLIED FOR ANY OTHER USE. ADDITIONAL INFORMATION MAY BE OBTAINED FROM MPEG LA, L.L.C. See <http://www.mpegla.com>

Use Only Nikon Brand Electronic Accessories

Nikon cameras are designed to the highest standards and include complex electronic circuitry. Only Nikon brand electronic accessories (including chargers, batteries, AC adapters, and flash accessories) certified by Nikon specifically for use with this Nikon digital camera are engineered and proven to operate within the operational and safety requirements of this electronic circuitry.

The use of non-Nikon electronic accessories could damage the camera and may void your Nikon warranty. The use of third-party rechargeable Li-ion batteries not bearing the Nikon holographic seal shown at right could interfere with normal operation of the camera or result in the batteries overheating, igniting, rupturing, or leaking.

For more information about Nikon brand accessories, contact a local authorized Nikon dealer.

<div> <ul style="list-style-type: none">Use Only Nikon Brand Accessories <p>Only Nikon brand accessories certified by Nikon specifically for use with your Nikon digital camera are engineered and proven to operate within its operational and safety requirements. THE USE OF NON-NIKON ACCESSORIES COULD DAMAGE YOUR CAMERA AND MAY VOID YOUR NIKON WARRANTY.</p> </div>	<div> <div>Ⓡ</div> <div>OMAN-TRA</div> <div>R/5684/18</div> <div>D090024</div> </div>
<div> <ul style="list-style-type: none">Before Taking Important Pictures <p>Before taking pictures on important occasions (such as at weddings or before taking the camera on a trip), take a test shot to ensure that the camera is functioning normally. Nikon will not be held liable for damages or lost profits that may result from product malfunction.</p> </div>	<div> <div>Ⓡ</div> <div>TRA</div> <div>REGISTERED No:</div> <div>ER45170/16</div> <div>DEALER No:</div> <div>DA39487/15</div> </div>
<div> <ul style="list-style-type: none">Life-Long Learning <p>As part of Nikon's "Life-Long Learning" commitment to ongoing product support and education, continually-updated information is available on-line at the following sites: <ul style="list-style-type: none">For users in the U.S.A.: https://www.nikonusa.com/ For users in Europe and Africa: https://www.europe-nikon.com/support/ For users in Asia, Oceania, and the Middle East: https://www.nikon-asia.com/ <p>Visit these sites to keep up-to-date with the latest product information, tips, answers to frequently-asked questions (FAQs), and general advice on digital imaging and photography. Additional information may be available from the Nikon representative in your area. See the following URL for contact information: https://imaging.nikon.com/</p> </p></div>	<div> <div>Ⓡ</div> <div>المغرب</div> <div>AGREE PAR L'ANRT MAROC</div> <div>Numéro d'agrément : MR 16745 ANRT 2018</div> </div>

Bluetooth

This product is controlled by the United States Export Administration Regulations (EAR). The permission of the United States government is not required for export to countries other than the following,