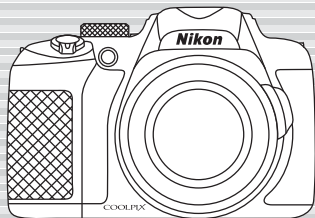


# **Nikon**

## Quick Start Guide

Confirming the Package Contents	3
First Steps	6
Shooting and Playback	15
Using ViewNX 2	21
Other Functions	26
For Your Safety	34



En

### COOLPIX P600

Thank you for purchasing the Nikon COOLPIX P600 digital camera. This guide introduces the procedures necessary for first time use of this camera.

To ensure proper use, please read and thoroughly understand the information in "For Your Safety" (□34) before using the camera.



### **Downloading the "Reference Manual"**

Refer to the *Reference Manual* (PDF format) for more detailed information.

The *Reference Manual* can be downloaded from the Nikon website.

<http://nikonimglib.com/manual/>

The *Reference Manual* can be viewed using Adobe Reader, available for free download from the Adobe website.

## **Nikon User Support**

Visit the site below to register your camera and keep up-to-date with the latest product information. You will find answers to frequently asked questions (FAQs) and can contact us for technical assistance.

**<http://www.europe-nikon.com/support>**

### **An Important Notice about Accessories**

Nikon COOLPIX digital cameras are designed to meet the highest standards and are equipped with complex electronic circuitry. Only Nikon accessories, including chargers, batteries, charging AC adapters, AC adapters, and cables are certified by Nikon specifically for use with your Nikon COOLPIX digital camera. These accessories have been engineered and tested to operate within the requirements of the electronic circuitry of our cameras.

# Confirming the Package Contents

In the event that any items are missing, please contact the store where you purchased the camera.



COOLPIX P600  
Digital Camera



Camera Strap



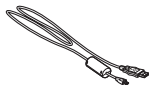
Lens Cap LC-CP29  
(with cord)



Rechargeable Li-ion Battery  
EN-EL23



Charging AC Adapter  
EH-71P\*



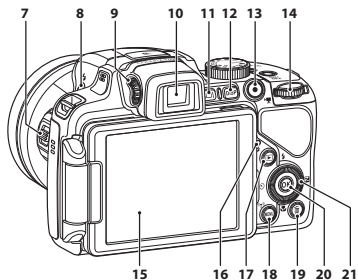
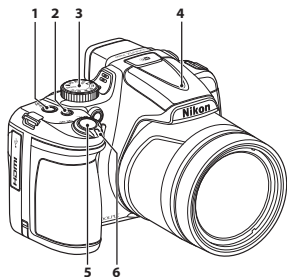
USB Cable UC-E21

- *Quick Start Guide* (this guide)
  - Warranty
- \* A plug adapter is included if the camera was purchased in a country or region that requires a plug adapter. The shape of the plug adapter varies with the country or region of purchase (📖10).

**NOTE:** A Secure Digital (SD) memory card, hereafter referred to as a “memory card”, is not provided.

📖: This icon indicates that more information is available elsewhere in this guide.

# Parts of the Camera



**1** Power switch/power-on lamp

**2** **Fn** (function) button

**3** Mode dial

**4** Flash

**5** Shutter-release button

**6** Zoom control

**W** : wide-angle

**T** : telephoto

 : thumbnail playback

 : playback zoom

 : help

**7** Side zoom control


**8**  (flash pop-up) button

**9** Diopter adjustment control

**10** Electronic viewfinder

**11**  (monitor) button

**12** **DISP** (display) button

**13**  (movie-record) button


**14** Command dial


**15** Monitor

**16** Charge lamp  
Flash lamp

**17**  (playback) button

**18** **MENU** (menu) button

**19**  (delete) button

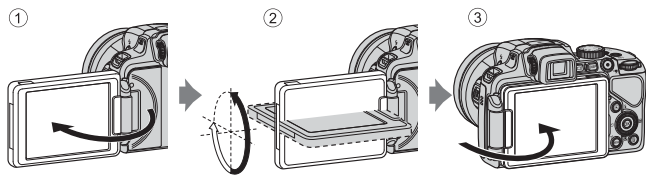
**20**  (apply selection) button

**21** Rotary multi selector  
(multi selector)

## Opening and Adjusting the Angle of the Monitor

The orientation and tilt of the monitor can be changed. This is useful when shooting with the camera in a high or a low position, or when taking self-portraits.

For normal shooting, fold the monitor against the camera body with the screen facing out (③).



When you are not using or carrying the camera, fold the monitor against the camera body with the screen facing inward to prevent scratches or contamination.



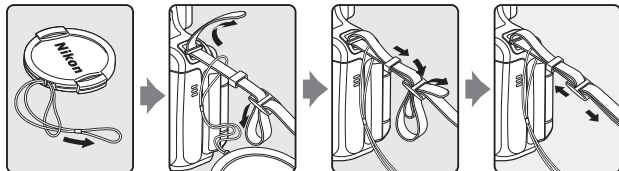
### **✓** Notes About the Monitor

When moving the monitor, do not apply excessive force and turn slowly within the monitor's adjustable range so that the connection will not be damaged.

# First Steps

## Step 1 Attaching the Camera Strap and Lens Cap

Attach the Lens Cap LC-CP29 to the strap, and then attach the strap to the camera.



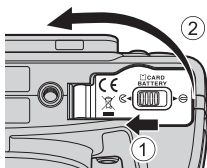
Attach the strap at two places.

### ✓ Lens Cap

- At times when you are not shooting images, attach the lens cap to the lens to protect it.
- Do not attach anything other than the lens cap to the lens.

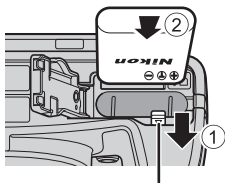
## Step 2 Insert the Battery and the Memory Card

- 2.1** Open the battery-chamber/memory card slot cover.



- 2.2** Insert the battery.

- Push the orange battery latch in the direction indicated by the arrow (1), and fully insert the battery (2).
- The battery locks into place when inserted correctly.



Battery latch



**Be Careful to Insert the Battery in Correct Direction**

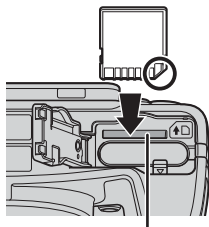
*Inserting the battery upside down or backwards could damage the camera.*



---

## 2.3 Insert the memory card.

- Slide the memory card in until it clicks into place.



Memory card slot

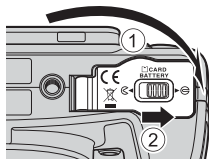
 **Be Careful to Insert the Memory Card in Correct Direction**

*Inserting the memory card upside down or backwards could damage the camera and the memory card.*



---

## 2.4 Close the battery-chamber/memory card slot cover.





## Removing the Battery and the Memory Card

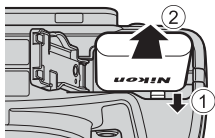
Turn the camera off and make sure that the power-on lamp and the monitor have turned off, and then open the battery-chamber/memory card slot cover.

### High Temperature Caution

The camera, battery, and memory card may be hot immediately after using the camera.

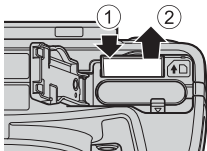
### Removing the Battery

- Move the battery latch in the direction indicated by the arrow (1) to eject the battery (2).



### Removing the Memory Card

- Gently push the memory card into the camera (1) to partially eject the card (2).

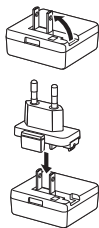


## Step 3 Charge the Battery

### 3.1 Prepare the included charging AC adapter.

If a plug adapter\* is included with your camera, attach the plug adapter to the plug on the charging AC adapter. Push the plug adapter firmly until it is securely held in place. Once the two are connected, attempting to forcibly remove the plug adapter could damage the product.

\* The shape of the plug adapter varies according to the country or region in which the camera was purchased. This step can be omitted if the plug adapter comes permanently bonded to the charging AC adapter.

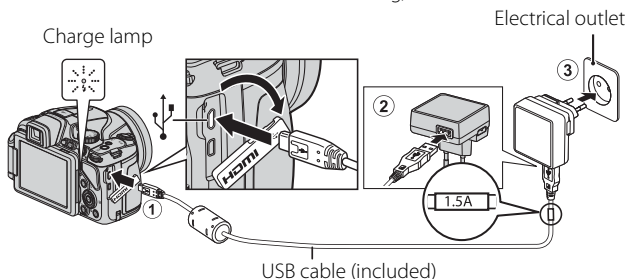


### 3.2 Make sure the battery is inserted in the camera, and then connect the camera to the charging AC adapter in order of ① to ③.

- Keep the camera turned off.
- Make sure that the plugs are properly oriented. Do not insert or remove the plugs at an angle when connecting or disconnecting them.

#### ✓ Notes

Do not use a USB cable other than the UC-E21. Using a USB cable other than the UC-E21 could result in overheating, fire or electric shock.




- The charge lamp slowly flashes green to indicate that the battery is charging.
- When charging is complete, the charge lamp stops flashing green and turns off. About 3 hours are required to charge a fully exhausted battery.

---

**3.3** Disconnect the charging AC adapter from the electrical outlet and then disconnect the USB cable.

 **Turning On the Camera While the Battery is Charging**


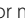
The camera does not turn on while the charging AC adapter is connected to it even when you press the power switch. Press and hold the  (playback) button to turn on the camera in playback mode and play back images. Shooting is not possible.

---

**Step 4 Turn the Camera On**

---

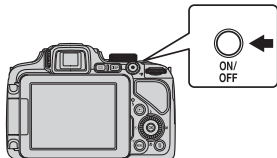
**4.1** Open the monitor and remove the lens cap.

- See “Opening and Adjusting the Angle of the Monitor” (5) for more information.
- See “Attaching the Camera Strap and Lens Cap” (6) for more information.


---

**4.2** Press the power switch.

- The monitor turns on.
- To turn the camera off, press the power switch again.

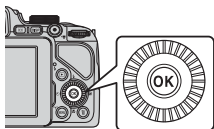



 **The Auto Off Function**

- If no operations are performed for a while, the monitor will turn off, the camera will enter standby mode, and the power-on lamp will flash. If no operations are performed for another 3 minutes, the camera will turn off automatically.
- The time that elapses before the camera enters standby mode is about 1 minute. The time can be changed using the **Auto off** setting in the setup menu (30).

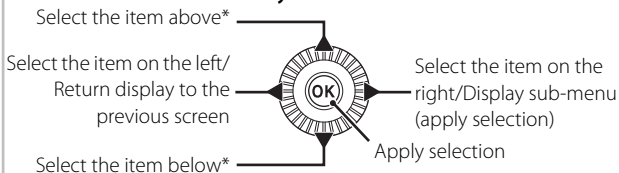
## Step 5 **Setting the Display Language, Date, and Time**

When the camera is turned on for the first time, the language-selection screen and the date and time setting screen for the camera clock are displayed. Use the rotary multi selector to select the settings.




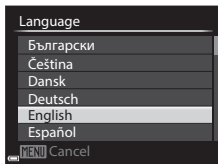
- If you exit without setting the date and time,  will flash when the shooting screen is displayed.

### Rotary Multi Selector

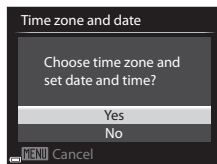


\* Items above or below can also be selected by rotating the rotary multi selector.

- 5.1** Use the multi selector ▲▼ to select the desired language and press the  button.

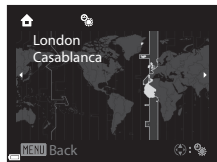


**5.2** Select **Yes** and press the **OK** button.



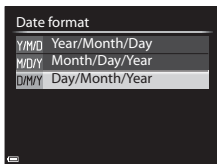
**5.3** Select your home time zone and press the **OK** button.

- To enable daylight saving time, press ▲. When the daylight saving time function is enabled, ☀ is displayed above the map.



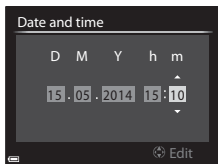
To turn off the daylight saving time function, press ▼.

**5.4** Select the date format and press the **OK** button.



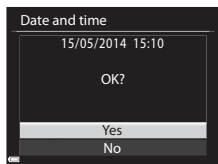
**5.5** Set the date and time, and press the **OK** button.

- Select a field: Press **◀▶** (changes between **D**, **M**, **Y**, **h**, and **m**).
- Edit the date and time: Press **▲▼**.  
Date and time can also be changed by rotating the multi selector or command dial.
- Confirm the setting: Select the **m** field and press the **OK** button.



**5.6** Select **Yes** and press the **OK** button.

- When settings are finished, the lens extends and the camera switches to shooting mode.




### **Imprinting the Date on Images While Taking Images**

After setting the date and time, press the **MENU** button to display the **Y** (setup) menu and set **Print date** setting (📖30).

- Use the rotary multi selector to select and set menu options.
- Press the **MENU** button to exit the menu.

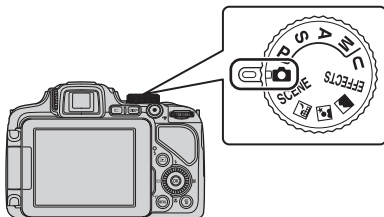
### **Changing the Current Date, Time, or Language**

Press the **MENU** button to display the **Y** (setup) menu and set **Language or Time zone and date** (📖31).

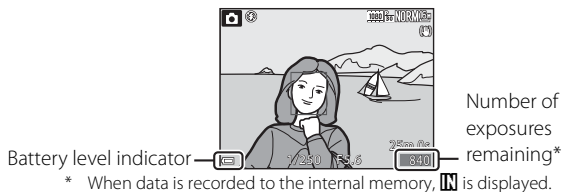
The next step explains basic shooting operations using  (auto) mode.

# Shooting and Playback




## Step 1 Rotate the Mode Dial and Align the (auto) Icon to the Mark



## Step 2 Check the Battery Level and the Number of Exposures Remaining




### Battery level indicator

Display	Description
	The battery level is high.
	The battery level is low.
 <b>Battery exhausted.</b>	The camera cannot capture images. Recharge the battery.

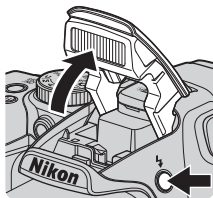
## **Monitor Display**

Press the **DISP** button to switch between showing and hiding the photo information or shooting information that is displayed in the monitor.

## **Built-in Flash**

In situations where a flash is needed, such as in dark locations or when the subject is backlit, press the  (flash pop-up) button to raise the flash.

- When not using the flash, gently push to lower the flash until it clicks shut.

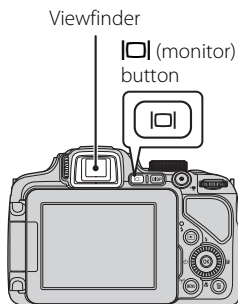


## **Switching Between the Monitor and Viewfinder (|◻| Button)**

You can use the viewfinder when bright light under the open sky makes it difficult to see the monitor.

Each press of the |◻| button switches the display between the monitor and viewfinder.

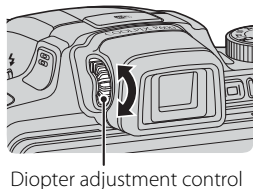
- When you fold the monitor against the camera body with the screen facing inward, the display in the monitor is switched to the viewfinder.



## **Diopter Adjustment of the Viewfinder**

When the image in the viewfinder is difficult to see, adjust by rotating the diopter adjustment control while looking through the viewfinder.

- Take care not to scratch your eye with your fingertips or nails.

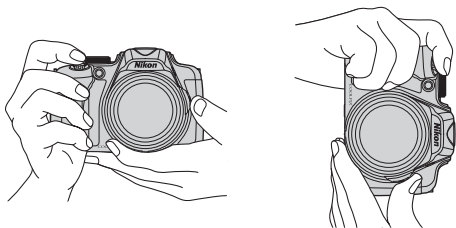




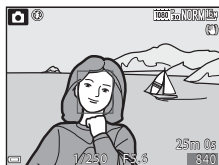
## Step 3 *Frame a Picture*

### 3.1 Hold the camera steady.

- Keep fingers and other objects away from the lens, flash, AF-assist illuminator, microphone, and speaker.



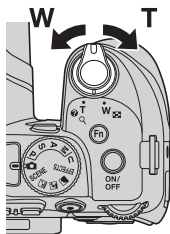
### 3.2 Frame the picture.



### Using the Zoom

- To zoom in closer to the subject: Move toward **T** (telephoto)
- To zoom out and view a larger area: Move toward **W** (wide-angle)
- Rotating the zoom control all the way in either direction adjusts the zoom quickly.
- The zoom can also be operated by moving the side zoom control (📖4) toward **T** or **W**.

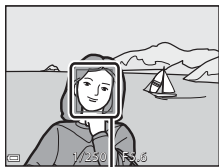
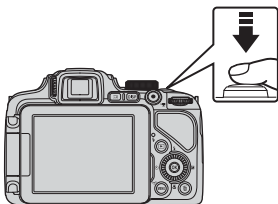
Zoom out      Zoom in



## Step 4 **Focus and shoot**

**4.1** Press the shutter-release button halfway.

- When the subject is in focus, the focus area that includes the subject or focus indicator glows green (multiple focus areas can glow green).
- When you are using digital zoom, the camera focuses on the subject in the center of the frame and the focus area is not displayed. When the camera has focused, the focus indicator glows green.
- If the focus area or focus indicator flashes red, the camera is unable to focus. Modify the composition and try pressing the shutter-release button halfway again.



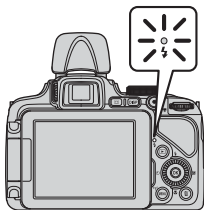
Focus area

**4.2** Without lifting your finger, press the shutter-release button the rest of the way down.

### The Flash Lamp

The status of the flash can be confirmed by pressing the shutter-release button halfway.


- On: The flash fires when you press the shutter-release button all the way down.
- Flashing: The flash is charging. The camera cannot shoot images.
- Off: The flash does not fire when an image is taken.



## **Focusing**

To set focus and exposure (shutter speed and aperture value), press the shutter-release button halfway.


The focus area varies depending on the shooting mode.

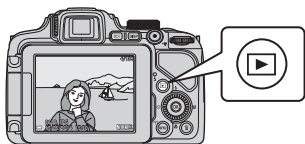
In  (auto) mode, the camera detects the main subject and focuses on it when the shutter-release button is pressed halfway. If a human face is detected, the camera automatically sets focus priority on it.

## **Step 5 Play Back Images**



---

**5.1** Press the  (playback) button.

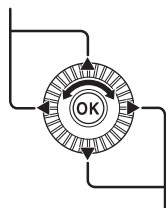
- If you press and hold down the  (playback) button while the camera is turned off, the camera turns on in playback mode.



**5.2** Use the multi selector to select an image to display.

- Press and hold down  to scroll through the images quickly.
- Images can also be selected by rotating the multi selector.
- To return to shooting mode, press the  button or shutter-release button.

Display the previous image




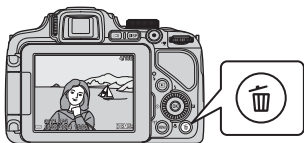
Display the next image




## **Switching the Information in the Monitor**

Press the **DISP** button to switch between showing and hiding the photo information or shooting information that is displayed in the monitor.

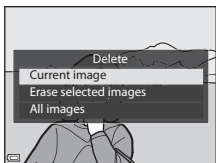
## Step 6 Delete Images

- 6.1** Press the  button to delete the image currently displayed in the monitor.




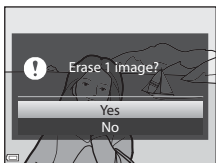
- 6.2** Use the multi selector   to select the desired deletion method and press the  button.

- To exit without deleting, press the **MENU** button.



- 6.3** Select **Yes** and press the  button.

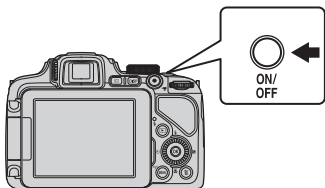
- Deleted images cannot be recovered.
- To cancel, select **No** and press the  button.



## Step 7 Turn Off the Camera

Press the power switch to turn the camera off.

- When the flash is raised, gently press the flash down to lower it.



# Using ViewNX 2

Install ViewNX 2 to upload, view, edit, and share photos and movies.

## Your Imaging Toolbox

ViewNX 2™



### Step 1 Installing ViewNX 2

An Internet connection is required. For system requirements and other information, see the Nikon website for your region.

---

#### 1.1 Download the ViewNX 2 installer.

Start the computer and download the installer from:  
<http://nikonimglib.com/nvnx/>

---

#### 1.2 Double-click the downloaded file.

---

#### 1.3 Follow the on-screen instructions.

---

#### 1.4 Exit the installer.

Click **Yes** (Windows) or **OK** (Mac).

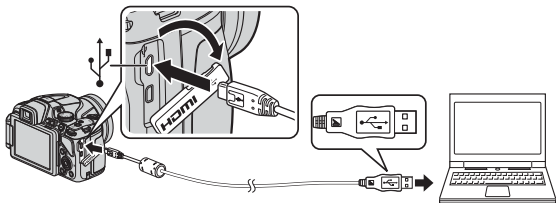
## Step 2 *Transferring Images to the Computer*

---

### 2.1 Choose how images will be copied to the computer.

Choose one of the following methods:

- **Direct USB connection:** Turn the camera off and ensure that the memory card is inserted in the camera. Connect the camera to the computer using the USB cable. The camera automatically turns on. To transfer images that are saved in the camera's internal memory, remove the memory card from the camera before connecting it to the computer.



- **SD card slot:** If your computer is equipped with an SD card slot, the card can be inserted directly in the slot.
- **SD card reader:** Connect a card reader (available separately from third-party suppliers) to the computer and insert the memory card.

If a message is displayed prompting you to choose a program, select Nikon Transfer 2.

- **When using Windows 7**

If the dialog shown at right is displayed, follow the steps below to select Nikon Transfer 2.



- 1 Under **Import pictures and videos**, click

**Change program.** A program selection dialog will be displayed; select **Import File using Nikon Transfer 2** and click **OK**.

- 2 Double-click **Import File**.

If the memory card contains a large number of images, it may take a while for Nikon Transfer 2 to start. Wait until Nikon Transfer 2 starts.

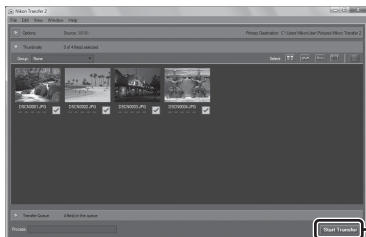
## **Connecting the USB Cable**

The connection may not be recognized if the camera is connected to the computer via a USB hub.

---

## 2.2 Transfer images to the computer.

- Click **Start Transfer**.



- At default settings, all the images on the memory card will be copied to the computer.

---

## 2.3 Terminate the connection.

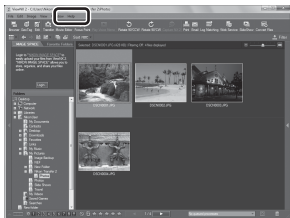
- If the camera is connected to the computer, turn the camera off and disconnect the USB cable.
- If you are using a card reader or card slot, choose the appropriate option in the computer operating system to eject the removable disk corresponding to the memory card and then remove the card from the card reader or card slot.



## Step 3 Viewing Images

Start ViewNX 2.

- Images are displayed in ViewNX 2 when transfer is complete.
- Consult online help for more information on using ViewNX 2.



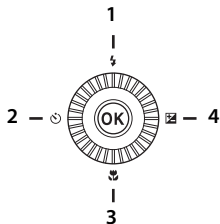
### Starting ViewNX 2 Manually

- **Windows:** Double-click the **ViewNX 2** shortcut on the desktop.
- **Mac:** Click the **ViewNX 2** icon in the Dock.

# Other Functions

## Functions That Can Be Set Using the Multi Selector

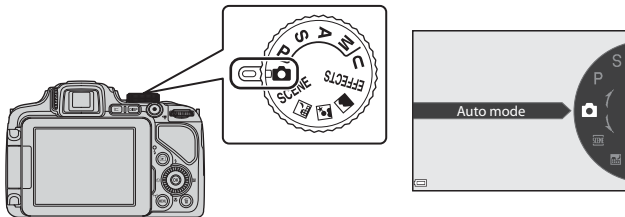
Press the multi selector ▲ (⚡), ◀ (⌚), ▼ (🌸), or ▶ (📷) while shooting to operate the following functions.



Function	Description
1 ⚡ Flash mode	The flash mode can be set when the flash is raised.
2 ⌚ Self-timer Smile timer	The camera is equipped with 10s, 2s timers. The camera detects smiling faces using face priority and releases the shutter automatically.
3 🌸 Focus mode	Choose from <b>AF</b> (autofocus), 🌸 (macro close-up), ▲ (infinity), and <b>MF</b> (manual focus). <ul style="list-style-type: none"><li>• <b>MF</b> can be selected when the shooting mode is <b>P</b>, <b>S</b>, <b>A</b>, <b>M</b> or <b>U</b>, special effects mode, or <b>Sports</b> or <b>Bird-watching</b> scene mode.</li></ul>
4 📷 Exposure compensation	You can adjust overall image brightness.

## Selecting a Shooting Mode

When the mode dial is rotated next to the mark, the camera switches to the corresponding shooting mode shown below.






### Auto mode

Used for general shooting.

### SCENE, , , (Scene) modes

Camera settings are optimized according to the scene that you select.

- **SCENE** : Press the **MENU** button and select a scene. When using **Scene auto selector**, the camera automatically selects the optimum scene mode when you frame an image, making it even easier to take images using settings that suit the scene.
-  (night landscape): Use this mode to shoot night landscapes.
-  (night portrait): Use this mode to shoot evening and night portraits that include background scenery.
-  (landscape): Use this mode to shoot landscapes.

### EFFECTS (Special effects) mode

Effects can be applied to images during shooting.

## P, S, A, M modes

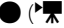
Select these modes for greater control over shutter speed and aperture value.

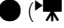
## U (User settings) mode

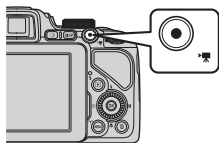
Setting combinations that are frequently used for shooting can be saved. The saved settings can be immediately retrieved for shooting simply by rotating the mode dial to **U**.

## Recording Movies

Movies can be recorded in any shooting mode.

Press the  (movie-record) button to start movie recording.

Press the  (movie-record) button again to stop movie recording.

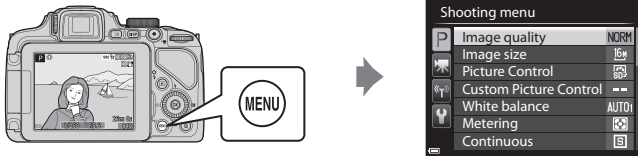


# Using Menus (the MENU Button)

Use the multi selector and **OK** button to navigate the menus.

**1** Press the **MENU** button.

- The menu that matches the status of the camera, such as shooting or playback menu, is displayed.  
Unavailable menu items are displayed in gray and cannot be selected.



**2** Use the multi selector to select a menu item.

- ▲▼ or rotation: Select an item above or below.
- ◀▶: Select an item on the left or right, or move between menu levels.
- **OK**: Apply a selection. Pressing ▶ also applies a selection.



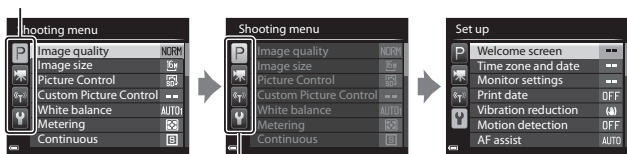
**3** After completing the settings, press the **MENU** button or shutter-release button.

- Press the shutter-release button to display the shooting screen.

## Switching Among Menu Tabs

To display a different menu, such as the setup menu, use the multi-selector to switch to another tab.

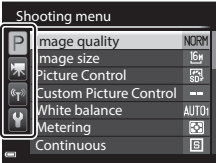
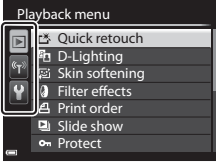


Tabs



Use ◀ to move to the tabs.

Use ▲▼ to select a tab, and press the **OK** button or ▶ to apply the selection.

## Tab Types

For Shooting	For Playback
 A screenshot of the camera's shooting menu. The menu is titled "Shooting menu" and lists several options: "Image quality" (set to NORM), "Image size" (set to 6M), "Picture Control" (set to SD), "Custom Picture Control" (set to --), "White balance" (set to AUTO), "Metering" (set to a center-weighted icon), and "Continuous" (set to a frame icon). A white box highlights the "P" tab icon on the left side of the menu.	 A screenshot of the camera's playback menu. The menu is titled "Playback menu" and lists several options: "Quick retouch", "D-Lighting", "Skin softening", "Filter effects", "Print order", "Slide show", and "Protect". A white box highlights the "▶" tab icon on the left side of the menu.
<p><b>P</b> tab: Displays the settings available for the current shooting mode. Depending on the current shooting mode, the tab icon that is displayed will be different.</p> <p> tab: Displays movie recording settings.</p>	<p><b>▶</b> tab: Displays the settings available for the playback mode.</p>
<p> tab: Displays the settings for Wi-Fi options.</p>	
<p><b>Y</b> tab: Displays the setup menu, where you can change general settings.</p>	




## Using the Wi-Fi (Wireless LAN) Function

The camera can connect via Wi-Fi (wireless LAN) connection to smart devices that have the dedicated software "Wireless Mobile Utility" installed.








You can use your smart device to release the camera's shutter by remote operation or copy images stored on the memory card inserted in the camera to the smart device.

# Playback Mode

The following options can be performed in full-frame playback mode.

Control	Name	Main Functions
	Zoom control	<ul style="list-style-type: none"><li>• Move toward <b>T</b> (Q) to zoom in on the image, and move toward <b>W</b> (⊞) to display images as thumbnails or the calendar.</li><li>• Adjust the volume for voice memo and movie playback.</li></ul>
	Multi selector	<ul style="list-style-type: none"><li>• While the playback screen is displayed: Change the displayed image using up (▲), left (◀), down (▼), right (▶), or by rotating the multi selector.</li><li>• While the setting screen is displayed: Select an item using ▲▼◀▶ or by rotating the multi selector.</li><li>• While an enlarged image is displayed: Move the display area.</li></ul>
	ⓄK (apply selection) button	<ul style="list-style-type: none"><li>• Display individual images of a sequence in full-frame playback mode.</li><li>• Scroll an image shot with Easy panorama.</li><li>• Play back movies.</li><li>• Switch from thumbnail playback or zoomed image display to full-frame playback.</li><li>• While the setting screen is displayed, apply the selection.</li></ul>



Control	Name	Main Functions
	Command dial	Switch the magnification of an enlarged image.
	<b>MENU</b> (menu) button	Display and hide the menu.
	 (delete) button	Delete images.
	 (monitor) button	Switch between the monitor and viewfinder.
	<b>DISP</b> (display) button	Switch the information displayed in the monitor.

# For Your Safety

To prevent damage to your Nikon product or injury to yourself or to others, read the following safety precautions in their entirety before using this equipment. Keep these safety instructions where all those who use the product will read them.

The consequences that could result from failure to observe the precautions listed in this section are indicated by the following symbol:



This icon marks warnings, information that should be read before using this Nikon product, to prevent possible injury.

## WARNINGS

### **Turn off in the event of malfunction**

Should you notice smoke or an unusual smell coming from the camera or charging AC adapter, unplug the charging AC adapter and remove the battery immediately, taking care to avoid burns. Continued operation could result in injury. After removing or disconnecting the power source, take the equipment to a Nikon-authorized service representative for inspection.

### **Do not disassemble**

Touching the internal parts of the camera or charging AC adapter could result in injury. Repairs should be performed only by qualified technicians. Should the camera or charging AC adapter break open as the result of a fall or other accident, take the product to a Nikon-authorized service representative for inspection, after unplugging the product and/or removing the battery.

### **Do not use the camera or charging AC adapter in the presence of flammable gas**

Do not use electronic equipment in the presence of flammable gas, as this could result in explosion or fire.

**⚠ Handle the camera strap with care**

Never place the strap around the neck of an infant or child.

**⚠ Keep out of reach of children**

Particular care should be taken to prevent infants from putting the battery or other small parts into their mouths.

**⚠ Do not remain in contact with the camera, charging AC adapter, or AC adapter for extended periods while the devices are on or in use**

Parts of the devices become hot. Leaving the devices in direct contact with the skin for extended periods may result in low-temperature burns.

**⚠ Do not leave the product where it will be exposed to extremely high temperatures, such as in an enclosed automobile or in direct sunlight**

Failure to observe this precaution could cause damage or fire.

**⚠ Use the appropriate power supply (battery, charging AC adapter, AC adapter, USB cable)**

Using a power supply other than those provided or sold by Nikon could result in damage or malfunction.


**⚠ Observe caution when handling the battery**

The battery may leak, overheat, or explode if improperly handled.

Observe the following precautions when handling the battery for use in this product:

- Before replacing the battery, turn the product off. If you are using the charging AC adapter/AC adapter, be sure it is unplugged.
- Use only a Rechargeable Li-ion Battery EN-EL23 (included). Charge the battery by using a camera that supports battery charging. To perform this operation, use the Charging AC Adapter EH-71P (included) and USB Cable UC-E21 (included). The Battery Charger MH-67P (available separately) is also available to charge the battery without using a camera.

- When inserting the battery, do not attempt to insert it upside down or backwards.
- Do not short or disassemble the battery or attempt to remove or break the battery insulation or casing.
- Do not expose the battery to flame or to excessive heat.
- Do not immerse in or expose to water.
- Put the battery in a plastic bag, etc. to insulate the terminal before transporting it. Do not transport or store with metal objects such as necklaces or hairpins.
- The battery is prone to leakage when fully discharged. To avoid damage to the product, be sure to remove the battery when no charge remains.
- Discontinue use immediately should you notice any change in the battery, such as discoloration or deformation.
- If liquid from the damaged battery comes in contact with clothing or skin, rinse immediately with plenty of water.

** Observe the following precautions when handling the charging AC adapter**

- Keep dry. Failure to observe this precaution could result in fire or electric shock.
- Dust on or near the metal parts of the plug should be removed with a dry cloth. Continued use could result in fire.
- Do not handle the plug or go near the charging AC adapter during lightning storms. Failure to observe this precaution could result in electric shock.
- Do not damage, modify, forcibly tug or bend the USB cable, place it under heavy objects, or expose it to heat or flames. Should the insulation be damaged and the wires become exposed, take it to a Nikon-authorized service representative for inspection. Failure to observe these precautions could result in fire or electric shock.
- Do not handle the plug or charging AC adapter with wet hands. Failure to observe this precaution could result in electric shock.


- Do not use with travel converters or adapters designed to convert from one voltage to another or with DC-to-AC inverters. Failure to observe this precaution could damage the product or cause overheating or fire.

** Use appropriate cables**


When connecting cables to the input and output jacks, use only the cables provided or sold by Nikon for the purpose, to maintain compliance with product regulations.

** Handle moving parts with care**

Be careful that your fingers or other objects are not pinched by the lens cover or other moving parts.

** Using the flash close to your subject's eyes could cause temporary visual impairment**


The flash should be no less than 1 m (3 ft 4 in.) from the subject. Particular care should be observed when photographing infants.

** Do not operate the flash with the flash window touching a person or object**

Failure to observe this precaution could result in burns or fire.

** Avoid contact with liquid crystal**

Should the monitor break, care should be taken to avoid injury caused by broken glass and to prevent liquid crystal from the monitor touching the skin or entering the eyes or mouth.

** Turn the power off when using inside an airplane or the hospital**

Turn the power off while inside the airplane during take off or landing. Do not use wireless network functions while in the air.

Follow the instructions of the hospital when using while in a hospital. The electromagnetic waves emitted by this camera may disrupt the electronic systems of the airplane or the instruments of the hospital. If you are using an Eye-Fi card, remove it from the camera before boarding an aircraft or entering a hospital.

# Notices

## Notices for Customers in Europe

### CAUTIONS

**RISK OF EXPLOSION IF BATTERY IS REPLACED BY AN INCORRECT TYPE.**

**DISPOSE OF USED BATTERIES ACCORDING TO THE INSTRUCTIONS.**

This symbol indicates that electrical and electronic equipment is to be collected separately.

The following apply only to users in European countries:

- This product is designated for separate collection at an appropriate collection point. Do not dispose of as household waste.
- Separate collection and recycling helps conserve natural resources and prevent negative consequences for human health and the environment that might result from incorrect disposal.
- For more information, contact the retailer or the local authorities in charge of waste management.



This symbol on the battery indicates that the battery is to be collected separately.

The following apply only to users in European countries:

- All batteries, whether marked with this symbol or not, are designated for separate collection at an appropriate collection point. Do not dispose of as household waste.
- For more information, contact the retailer or the local authorities in charge of waste management.



## Caring for the Camera

To ensure continued enjoyment of this Nikon product, observe the precautions described below in addition to the warnings in “For Your Safety” (📖34-37) when using or storing the device.

### ✔ **Do Not Drop**

The product may malfunction if subjected to strong shock or vibration.

### ✔ **Handle the Lens and All Moving Parts with Care**

Do not apply force to the lens, lens cover, monitor, memory card slot, or battery chamber. These parts are easily damaged. Applying force to the lens cover could result in camera malfunction or damage to the lens. Should the monitor break, care should be taken to avoid injury caused by broken glass and to prevent the liquid crystal from the display touching the skin or entering the eyes or mouth.

### ✔ **Keep Dry**

The device will be damaged if immersed in water or subjected to high humidity.

### ✔ **Avoid Sudden Changes in Temperature**

Sudden changes in temperature, such as when entering or leaving a heated building on a cold day, can cause condensation to form inside the device. To prevent condensation, place the device in a carrying case or a plastic bag before exposing it to sudden changes in temperature.

### ✔ **Keep away from Strong Magnetic Fields**

Do not use or store this device in the vicinity of equipment that generates strong electromagnetic radiation or magnetic fields. Strong static charge or the magnetic fields produced by equipment such as radio transmitters could interfere with the monitor, damage data saved on the memory card, or affect the product’s internal circuitry.

## **Do Not Point the Lens at Strong Light Sources for Extended Periods**

Avoid pointing the lens at the sun or other strong light sources for extended periods when using or storing the camera. Intense light may cause deterioration of the image sensor, producing a white blur effect in photographs.

## **Turn the Product off Before Removing or Disconnecting the Power Source or the Memory Card**

Do not remove the battery while the product is on, or while images are being saved or deleted. Forcibly cutting power in these circumstances could result in loss of data or in damage to product memory or internal circuitry.

## **Notes About the Monitor**

- Monitors and electronic viewfinders are constructed with extremely high precision; at least 99.99% of pixels are effective, with no more than 0.01% being missing or defective. Hence while these displays may contain pixels that are always lit (white, red, blue, or green) or always off (black), this is not a malfunction and has no effect on images recorded with the device.
- Images in the monitor may be difficult to see under bright lighting.
- The monitor is lit by an LED backlight. Should the monitor begin to dim or flicker, contact your Nikon-authorized service representative.

## **About the Manuals**

Nikon will not be held liable for any damages resulting from the use of this product.

## **Before Taking Important Pictures**

Before taking pictures on important occasions (such as at weddings or before taking the camera on a trip), take a test shot to ensure that the camera is functioning normally. Nikon will not be held liable for damages or lost profits that may result from product malfunction.



## Disposing of Data Storage Devices

Please note that deleting images or formatting data storage devices such as memory cards or built-in camera memory does not completely erase the original image data. Deleted files can sometimes be recovered from discarded storage devices using commercially available software, potentially resulting in the malicious use of personal image data.

Ensuring the privacy of such data is the user's responsibility.

Before discarding a data storage device or transferring ownership to another person, erase all data using commercial deletion software, or format the device and then completely refill it with images containing no private information (for example, pictures of empty sky). Be sure to also replace any pictures selected for the **Select an image** option in the **Welcome screen** setting. Care should be taken to avoid injury or damage to property when physically destroying data storage devices. You can clear the Wi-Fi settings using **Restore default settings** in the Wi-Fi options menu (📖31).

## Wi-Fi (Wireless LAN Network)

This product is controlled by the United States Export Administration Regulations, and you are required to obtain permission from the United States government if you export or re-export this product to any country to which the United States embargoes goods. The following countries were subject to embargo: Cuba, Iran, North Korea, Sudan, and Syria. Since the target countries are subject to change, please contact the United States Department of Commerce for the latest information.

### **Restrictions on Wireless Devices**

The wireless transceiver included in this product conforms to wireless regulations in the country of sale and is not for use in other countries (products purchased in the EU or EFTA can be used anywhere within the EU and EFTA). Nikon does not accept liability for use in other countries. Users who are unsure as to the original country of sale should consult with their local Nikon service center or Nikon-authorized service representative. This restriction applies to wireless operation only and not to any other use of the product.

## Declaration of Conformity (Europe)

Hereby, Nikon Corporation, declares that COOLPIX P600 is in compliance with the essential requirements and other relevant provisions of Directive 1999/5/EC. The declaration of conformity may be consulted at [http://imaging.nikon.com/support/pdf/DoC\\_P600.pdf](http://imaging.nikon.com/support/pdf/DoC_P600.pdf).

## הודעה ללקוחות במדינת ישראל

ההתקן תואם לתקנות תדרי רדיו.

יש לנהוג באמצעי זהירות בעת השימוש באפשרויות התקשורת

א. נקודות הגישה תהיה מיועדת אך ורק לחיבור משתמש תמצוי בחצרים מתוחמים (דוגמת בית, בית עסק, מתחם שדה תעופה, קמפוס אוניברסיטאי וכיו

ב. לצורך גישה לאינטרנט, נקודת הגישה תקושר מחוץ לחצרים אך ורק אל בעל רשיון למתן שירות גישה לאינטרנט (ISP, להלן-ספק אינטרנט). הקישור לספק אינטרנט יהיה אך ורק באמצעות קו תקשורת נתונים המסופק בידי בעל רשיון למתן שירותי תקשורת נתונים ;

ג. קישור נקודת הגישה מחוץ לחצרים לצורך תקשורת נתונים ייעשה באמצעות תשתיות של בעל רשיון מתאים ובלבד שלא ייעשה שימוש בקישור כאמור לצורך העברת קול (VOICE)

ד. לצורך שרות לצד ג' נדרש רשיון נוסף מאגף הנדסה ורישוי (משרד התקשורת).

## **Precautions when Using Radio Transmissions**

Always keep in mind that radio transmission or reception of data is subject to interception by third parties. Note that Nikon is not responsible for data or information leaks that may occur during data transfer.

## **Personal Information Management and Disclaimer**

- User information registered and configured on the product, including wireless LAN connection settings and other personal information, is susceptible to alteration and loss resulting from operational error, static electricity, accident, malfunction, repair or other handling. Always keep separate copies of important information. Nikon is not responsible for any direct or indirect damages or lost profits resulting from alteration or loss of content that is not attributable to Nikon.
- Before discarding this product or transferring it to another owner, perform **Reset all** in the setup menu (📖29) to delete all user information registered and configured with the product, including Wi-Fi options and other personal information.

## **AVC Patent Portfolio License**

This product is licensed under the AVC Patent Portfolio License for the personal and non-commercial use of a consumer to (i) encode video in compliance with the AVC standard (“AVC video”) and/or (ii) decode AVC video that was encoded by a consumer engaged in a personal and non-commercial activity and/or was obtained from a video provider licensed to provide AVC video. No license is granted or shall be implied for any other use. Additional information may be obtained from MPEG LA, L.L.C. See <http://www.mpegla.com>.

## **FreeType License (FreeType2)**

Portions of this software are copyright © 2012 The FreeType Project (<http://www.freetype.org>). All rights reserved.

## **MIT License (HarfBuzz)**

Portions of this software are copyright © 2014 The HarfBuzz Project (<http://www.freedesktop.org/wiki/Software/HarfBuzz>). All rights reserved.

## Trademark Information

- Microsoft, Windows and Windows Vista are either registered trademarks or trademarks of Microsoft Corporation in the United States and/or other countries.
- Mac, OS X, the iFrame logo and the iFrame symbol are trademarks or registered trademarks of Apple Inc., in the U.S. and other countries.
- Adobe and Acrobat are registered trademarks of Adobe Systems Inc.
- SDXC, SDHC and SD Logos are trademarks of SD-3C, LLC.



- PictBridge is a trademark.
- HDMI, HDMI logo and High-Definition Multimedia Interface are trademarks or registered trademarks of HDMI Licensing LLC.

## HDMI

- Wi-Fi and the Wi-Fi logo are trademarks or registered trademarks of the Wi-Fi Alliance.
- Android and Google Play are trademarks or registered trademarks of Google, Inc.
- All other trade names mentioned in this manual or the other documentation provided with your Nikon product are trademarks or registered trademarks of their respective holders.

# **Warranty Terms - Nikon Europe Service Warranty**

Dear Nikon Customer,

We thank you for your purchasing this Nikon product. Should your Nikon product require warranty service, please contact the dealer from whom it was purchased or a member of our authorized service network within the sales territory of Nikon Europe BV (Europe/Africa and Russia).

In order to avoid any unnecessary inconvenience, we advise you to read the user manuals carefully before contacting the dealer or our authorized service network.

Your Nikon equipment is guaranteed against any manufacturing defects for one full year from the date of original purchase. If during this period of guarantee the product proves defective due to improper material or workmanship, our authorized service network within the sales territory of Nikon Europe BV will, without charge for labor and parts, repair the product in the terms and conditions set as below. Nikon reserves the right (at its sole discretion) to replace or repair the product.

1. This warranty is only provided upon presentation of the completed warranty card and original invoice or purchase receipt indicating the date of purchase, product type and dealer's name, together with the product. Nikon reserves the right to refuse free-of-charge warranty service if the above documents cannot be presented or if the information contained in it is incomplete or illegible.
2. This warranty will not cover:
  - necessary maintenance and repair or replacement of parts due to normal wear and tear.
  - modifications to upgrade the product from its normal purpose as described in user manuals, without the prior written consent of Nikon.
  - transport costs and all risks of transport relating directly or indirectly to the warranty of the products.

- any damage resulting from modifications or adjustments which may be made to the product, without the prior written consent of Nikon, in order to comply with local or national technical standards in force in any other country than the ones for which the product was originally designed and/or manufactured.
3. The warranty will not be applicable in the case of:
    - damage caused by misuse including but not limited to failure to use the product for its normal purpose or according to the user instructions on the proper use and maintenance, and to installation or use of the product inconsistent with the safety standards in force in the country where it is used.
    - damage caused by accidents including but not limited to lightning, water, fire, misuse or neglect.
    - defacing, illegibility or removal of the model or serial number on the product.
    - damage resulting from repairs or adjustments which have been conducted by unauthorized service organizations or persons.
    - defects in any system into which the product is incorporated or with which it is used.
  4. This service warranty does not affect the consumer's statutory rights under applicable national laws in force, nor the consumer's right against the dealer arising from their sales/purchase contract.

**Notice:** An overview of all authorized Nikon Service Stations can be found online by following this Link (URL = <http://www.europe-nikon.com/service/>).

**NIKON CORPORATION**

---

© 2014 Nikon Corporation



FX4A01(11)  
6MN35411-01