

Thank you for your purchase of Capture NX 2. The current version offers the following new features, which are not described in the manual.

NRW Support

Capture NX 2 supports the NRW RAW format used in the COOLPIX P6000.

The NRW Format

The COOLPIX P6000 records RAW image data in NRW. As is the case with NEF (*User's Manual*, pg. 19), NRW files store image data separately from ICC profiles, XMP/IPTC tags, and the contents of the edit list. Features available only with digital SLR cameras, such as Image Dust Off, can not however be used with NRW files.

NRW files can be saved in NRW, TIFF, and JPEG formats. Other formats can not be converted to NRW.

Converting NRW Images to NEF

NRW images can not be saved in NEF. Use the NRW format to save the contents of the edit list.



The File-Type Filter (*User's Manual*, pg. 71)



A "pairing" button has been added to the browser file-type filter, which now contains the following options:

All Images	Show all images, including JPEG images recorded at settings of NEF+JPEG or NRW+JPEG.
NEF NRW only	Show only NEF and NRW images.
JPEG only	Show only JPEG images.
TIFF only	Show only TIFF images.

The Pairing Button

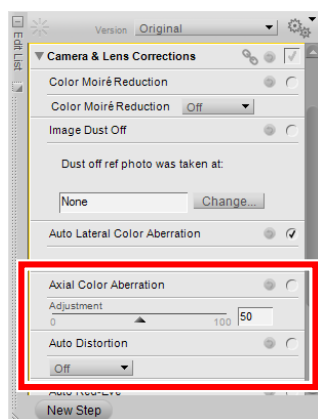
To show each pair of NEF+JPEG images as a single image, select **All Images** and click  to turn pairing on (.

The "Develop" Section

The following tools have been added to the "Develop" section.

Camera & Lens Corrections (*User's Manual*, pg. 139)

Axial Color Aberration and **Auto Distortion** tools have been added to "Camera & Lens Corrections".



Axial Color Aberration RAW TIFF JPEG

This tool reduces axial chromatic aberration (color fringes). Place a check in the Apply checkbox () to turn axial color aberration control on and move the slider to the right for increased aberration control. To turn axial aberration control off, remove the check from the Apply checkbox (.

Auto Distortion RAW TIFF JPEG

This tool can only be applied to images created by digital SLR cameras with type G or D lenses. It uses lens information recorded with the image to correct the barrel distortion characteristic of wide-angle lenses or the pin-cushion distortion associated with telephoto lenses. It can not be applied to photos taken with D100 or D1-series cameras or with PC, fisheye, or certain other lenses, nor is it available with JPEG or TIFF images that were taken with auto distortion control enabled or that have been processed using auto distortion control and saved under a different name.

To turn auto distortion control on, place a check in the Apply checkbox () and select **Auto** from the pull-down menu. Auto distortion control is automatically enabled for RAW photos taken with **On** selected for the auto distortion control option available in the shooting menu of some cameras. In other cases, auto distortion control defaults to off (.

Picture Controls RAW

Available Picture Controls

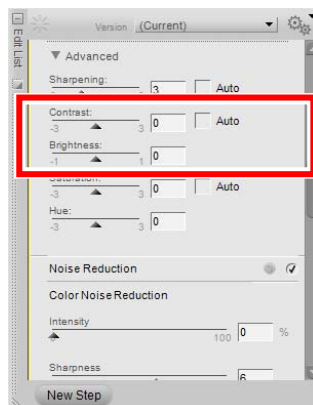
The **D2XMODE1**, **D2XMODE2**, and **D2XMODE3** Picture Controls (*User's Manual*, pg. 131) are not displayed in the menus and can not be selected if:

- The current photograph was taken with the D3100
- **Always use the latest Color Reproduction Process** is selected in the Picture Control Utility preferences dialog
- The current image is in the NRW RAW format

Advanced

Contrast and **Brightness** (*User's Manual*, pg. 132) can be adjusted when Active D-Lighting is in effect if:

- The current photograph was taken with the D3100
- **Always use the latest Color Reproduction Process** is selected in the Picture Control Utility preferences dialog

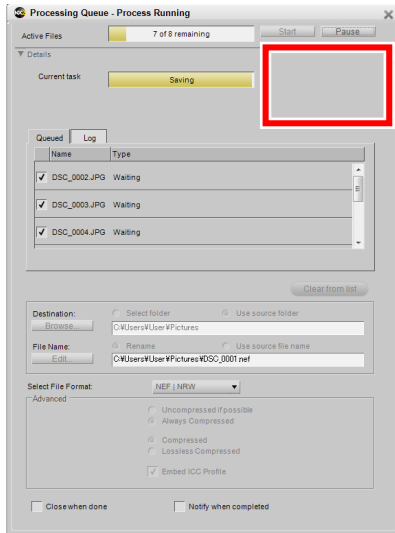


Name Changes

Auto Color Aberration (*User's Manual*, pg. 140) and **Color Aberration Control** (*User's Manual*, pp. 203, 259) have been changed to **Auto Lateral Color Aberration** and **Lateral Color Aberration** respectively.

Batch Processing

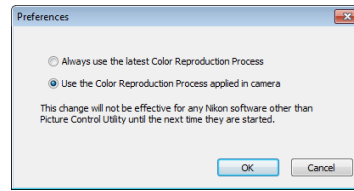
Previews are no longer displayed in the "Processing Queue" dialog.



Preferences

The Picture Control Utility now contains a **Preferences** button. Clicking the **Preferences** button displays the following options:

Always use the latest Color Reproduction Process	Process colors using the Picture Controls for the latest Nikon cameras.
Use the Color Reproduction Process applied in camera	Process colors using the Picture Controls for the Nikon camera that took the photo.



Select **Always use the latest Color Reproduction Process** to use advanced color processing for improved color reproduction with images taken with cameras that use earlier versions of these color processing algorithms. This option does not apply to RAW images in NRW format.

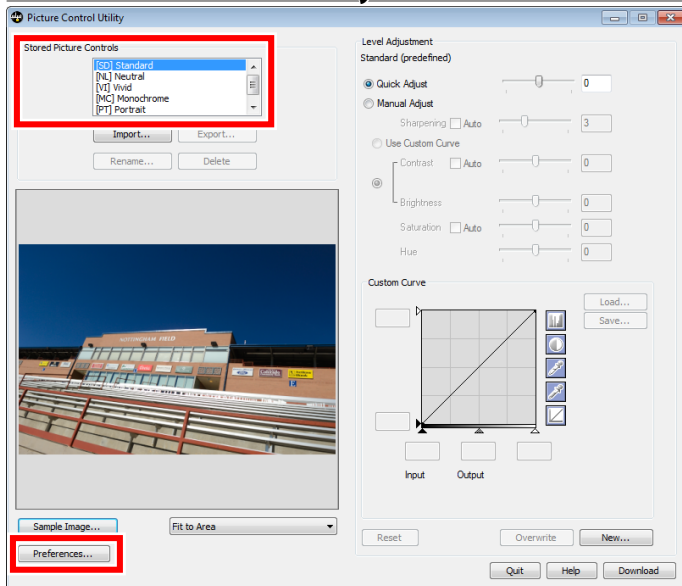
☑ "Always use the Latest Color Reproduction Process"

When **Always use the latest Color Reproduction Process** is selected, the colors in the thumbnails for images taken with cameras that use earlier versions will differ markedly from the colors in the actual image, and Custom Picture Controls based on the **D2XMODE1**, **D2XMODE2**, and **D2XMODE3** Picture Controls will not appear in the Stored Picture Controls.

☑ Color Reproduction Process

"Color reproduction process" refers to the algorithms that Nikon uses to display color.

The Picture Control Utility ^{RAW}



Preset Picture Controls

The **Stored Picture Controls** contains the following six preset Picture Controls:

[SD] Standard	Standard processing for balanced results. Recommended for most situations.
[NL] Neutral	Minimal processing for natural results. Choose for photographs that will later be extensively processed or retouched.
[VI] Vivid	Photographs are enhanced for a vivid, photoprint effect. Choose for photographs that emphasize primary colors.
[MC] Monochrome	Take monochrome photographs.
[PT] Portrait	Process portraits for skin with natural texture and a rounded feel.
[LS] Landscape	Produces vibrant landscapes and cityscapes.