

Preparing for Shooting

Insert the Batteries and Memory Card

- Open the battery-chamber/memory card slot cover.
 - Hold the camera upside down to prevent the batteries from falling out.
- Insert the batteries and memory card.
 - Confirm that the positive (+) and negative (-) battery terminals are oriented correctly and insert the batteries.
 - Confirm the correct orientation and slide the memory card in until it clicks into place.
- Close the battery-chamber/memory card slot cover.

Applicable Batteries

- Two LR6/L40 (AA-size) alkaline batteries (included batteries)
- Two FR6/L91 (AA-size) lithium batteries
- Two EN-MH2 rechargeable Ni-MH (nickel metal hydride) batteries

Removing the Memory Card

Turn the camera off and make sure that the power-on lamp and the monitor have turned off, and then open the battery-chamber/memory card slot cover.

- Gently push the memory card into the camera (1) to partially eject the card (2).
- The camera, batteries, and memory card may be hot immediately after using the camera.

Turn the Camera On and Set the Display Language, Date, and Time

- Press the power switch to turn on the camera.
 - The monitor turns on when the camera is turned on.
 - To turn the camera off, press the power switch again.
- Use the multi selector $\blacktriangle/\blacktriangledown$ to select the desired language and press the OK button.
- Use $\blacktriangle/\blacktriangledown$ to select **Yes** and press the OK button.
- Use $\blacktriangle/\blacktriangledown$ to select your home time zone and press the OK button.
 - Press \blacktriangle to turn on daylight saving time (☀ is displayed above the map). Press \blacktriangledown to turn it off.
- Use $\blacktriangle/\blacktriangledown$ to select the date format and press the OK button.

- Set the date and time, and press the OK button.
 - Use $\blacktriangle/\blacktriangledown$ to select a field and then use $\blacktriangle/\blacktriangledown$ to set the date and time.
 - Select the minute field and press the OK button to confirm the setting.
- When the confirmation screen is displayed, use $\blacktriangle/\blacktriangledown$ to select **Yes** and press the OK button.
- Press the M (shooting mode) button.
- Use $\blacktriangle/\blacktriangledown$ to select **Easy auto mode** and press the OK button.

- The camera enters the shooting mode and you can take images in Easy auto mode.
- While shooting, you can check the battery level indicator and the number of exposures remaining.

Thank you for purchasing the Nikon COOLPIX L30 digital camera. Before using the camera, please thoroughly read "Confirming the Package Contents" and "For Your Safety" on the reverse side for correct use of the camera. After reading, please keep this manual handy and refer to it to enhance your enjoyment of your new camera. The User's Manual introduces the procedures necessary in using this camera for the first time. For more detailed information, please download the "Reference Manual" from the URL listed in the lower right of this page.

About This Manual

- SD, SDHC, and SDXC memory cards are referred to as "memory cards" in this manual.
- In this manual, images are sometimes omitted from monitor display samples so that monitor indicators can be more clearly shown.
- Illustrations and monitor content shown in this manual may differ from the actual product.

Printed in China
CT3J01(11)
6MN32411-01

Using the Camera

Shooting with Easy Auto Mode

- Hold the camera steady.
 - Keep fingers and other objects away from the lens, flash, AF-assist illuminator, microphone, and speaker.
- Frame the picture.
 - Move the zoom control to change the zoom position.
 - When the camera automatically determines the scene mode, the shooting mode icon changes.
- Press the shutter-release button halfway.
 - When the subject is in focus, the focus area glows green.
 - If the focus area or focus indicator flashes, the camera is unable to focus. Modify the composition and try pressing the shutter-release button halfway again.
- Without lifting your finger, press the shutter-release button the rest of the way down.
 - The indicator showing the number of exposures remaining or the indicator showing the maximum movie length flashes while images are being saved or while a movie is being recorded. **Do not open the battery-chamber/memory card slot cover or remove the batteries or memory card** while an indicator is flashing. Doing this could result in loss of data, or in damage to the camera or the memory card.

Play Back Images

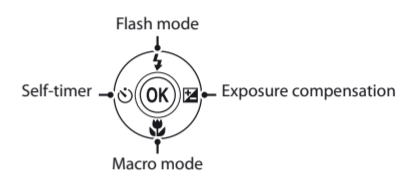
- Press the P (playback) button to enter playback mode.
- Use the multi selector $\blacktriangle/\blacktriangledown/\blacktriangleleft/\blacktriangleright$ to select an image to display.
 - To return to shooting mode, press the M button or shutter-release button.
 - Move the zoom control toward T (Q) in full-frame playback mode to zoom in on the image.
 - Move the zoom control toward W (R) in full-frame playback mode to display a list of images called "thumbnails".

Delete Images

- Press the D (delete) button to delete the image currently displayed in the monitor.
- Use the multi selector $\blacktriangle/\blacktriangledown$ to select **Current image** and press the OK button.
 - To exit without deleting, press the **MENU** button.
- Select **Yes** and press the OK button.
 - Deleted images cannot be recovered.

Using the Flash and Self-timer

You can use the multi selector to set frequently used functions such as the flash and self-timer. You can set the following functions using $\blacktriangle/\blacktriangledown/\blacktriangleleft/\blacktriangleright$ in the shooting screen.



- Flash mode**
You can select the flash mode to match the shooting conditions.
- Self-timer**
If you select **ON**, the camera releases the shutter 10 seconds after you press the shutter-release button.
- Macro mode**
Use macro mode when taking close-up images.
- Exposure compensation**
You can adjust overall image brightness.

The functions that are available vary with the shooting mode.

Shooting Features

Changing the Shooting Mode

The following shooting modes are available.

- Easy auto mode**
The camera automatically selects the optimum scene mode when you frame an image, making it even easier to take images using settings that suit the scene.
- Scene mode**
Camera settings are optimized according to the scene that you select.
- Smart portrait**
When the camera detects a smiling face, you can take an image automatically without pressing the shutter-release button (smile timer). You can also use the skin softening option to smooth the skin tones of human faces.
- Auto mode**
Used for general shooting. Settings can be adjusted to suit the shooting conditions and the type of shot you want to capture.

- Press the M (shooting mode) button in the shooting screen.
- Use the multi selector $\blacktriangle/\blacktriangledown$ to select a shooting mode and press the OK button.

Recording and Playing Back Movies

- Display the shooting screen.
 - Check the remaining amount of movie recording time.
- Press the M (movie-record) button to start movie recording.
- Press the M (movie-record) button again to stop recording.
- Select a movie in full-frame playback mode and press the OK button.
 - Movies are indicated by the movie options icon.

Using the Menus

Use the multi selector and OK button to navigate the menus. The following menus are available.

- Shooting menu**
Available by pressing the **MENU** button in the shooting screen. Allows you to change image size and quality, continuous shooting settings, etc.
- Playback menu**
Available by pressing the **MENU** button when viewing images in full-frame playback mode or thumbnail playback mode. Allows you to edit images, play slide shows, etc.
- Movie menu**
Available by pressing the **MENU** button in the shooting screen. Allows you to change movie recording settings.
- Setup menu**
Allows you to adjust basic camera functions such as date and time, display language, etc.

- Press the **MENU** (menu) button.
 - The menu is displayed.
- Press the multi selector \blacktriangleleft .
 - The current menu icon is displayed in yellow.

- Use $\blacktriangle/\blacktriangledown$ to select the desired menu icon.
 - The menu is changed.

- Press the OK button.
 - The menu options become selectable.

- Use $\blacktriangle/\blacktriangledown$ to select a menu option, and then press the OK button.
 - The settings for the option you selected are displayed.
- Use $\blacktriangle/\blacktriangledown$ to select the setting, and then press the OK button.
 - The setting you selected is applied.
 - When you are finished using the menu, press the **MENU** button.

- Certain menu options cannot be set depending on the current shooting mode or the state of the camera.
- When a menu is displayed, you can switch to shooting mode by pressing the shutter-release button, M (shooting mode) button, or M (movie-record) button.

Using ViewNX 2

Install ViewNX 2 to upload, view, edit, and share photos and movies.

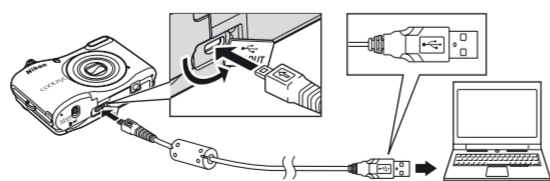
Installing ViewNX 2

An Internet connection is required. For system requirements and other information, see the Nikon website for your region.

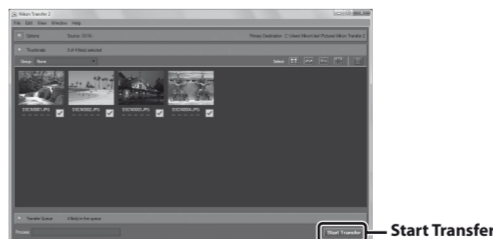
- Download the ViewNX 2 installer.
 - Start the computer and download the installer from: <http://nikonimglib.com/nvnx/>
- Double-click the downloaded file.
- Follow the on-screen instructions.
- Exit the installer.
 - Click **Yes** (Windows) or **OK** (Mac).

Transferring Images to the Computer

- Choose how images will be copied to the computer.
 - Choose one of the following methods:
 - SD card slot:** If your computer is equipped with an SD card slot, the card can be inserted directly in the slot.
 - SD card reader:** Connect a card reader (available separately from third-party suppliers) to the computer and insert the memory card.
 - Direct USB connection:** Turn the camera off and ensure that the memory card is inserted in the camera. Connect the camera to the computer using the USB cable. Turn the camera on.



- Transfer images to the computer.
 - Click **Start Transfer**.



- At default settings, all the images on the memory card will be copied to the computer.
- Terminate the connection.
 - If you are using a card reader or card slot, choose the appropriate option in the computer operating system to eject the removable disk corresponding to the memory card, and then remove the card from the card reader or card slot. If the camera is connected to the computer, turn the camera off and disconnect the USB cable.

Troubleshooting

If the camera fails to function as expected, check the list of common problems below before consulting your retailer or Nikon-authorized service representative.

- The camera is on but does not respond.**
Wait for recording to end. If the problem persists, turn the camera off. If the camera does not turn off, remove and reinsert the battery or batteries or, if you are using an AC adapter, disconnect and reconnect the AC adapter. Note that although any data currently being recorded will be lost, data that have already been recorded will not be affected by removing or disconnecting the power source.
- Camera turns off without warning.**
 - The camera automatically turns off to save power (auto off function).
 - The camera or batteries have become too cold and cannot operate properly.
 - The inside of the camera has become hot. Leave the camera off until the inside of the camera has cooled, and then try turning it on again.
- Monitor is blank.**
 - The camera is off.
 - The batteries are exhausted.
 - The camera has entered standby mode to save power. Press the power switch, shutter-release button, M button, P button, or M (movie-record) button.
- Camera becomes hot.**
The camera may become hot when used for an extended period of time to shoot movies or send images using an Eye-Fi card, or when used in a hot environment; this is not a malfunction.

Downloading the "Reference Manual"

Refer to the Reference Manual (PDF format) for more detailed information. The Reference Manual can be downloaded from the Nikon website. <http://nikonimglib.com/manual/> The Reference Manual can be viewed using Adobe Reader, available for free download from the Adobe website.

