

DIGITAL CAMERA

# COOLPIX L30

## User's Manual

NIKON CORPORATION

Thank you for purchasing the Nikon COOLPIX L30 digital camera. Before using the camera, please thoroughly read "Confirming the Package Contents" and "For Your Safety" on the reverse side for correct use of the camera. After reading, please keep this manual handy and refer to it to enhance your enjoyment of your new camera. The *User's Manual* introduces the procedures necessary in using this camera for the first time. For more detailed information, please download the "Reference Manual" from the following URL: <http://nikonimglib.com/manual/>

The *Reference Manual* can be viewed using Adobe Reader, available for free download from the Adobe website.

### About This Manual

- SD, SDHC, and SDXC memory cards are referred to as "memory cards" in this manual.
- In this manual, images are sometimes omitted from monitor display samples so that monitor indicators can be more clearly shown.
- Illustrations and monitor content shown in this manual may differ from the actual product.

Printed in Europe  
CT3L01(11)  
AMA15594 6MN32511-01

## Preparing for Shooting

### Insert the Batteries and Memory Card

- Open the battery-chamber/memory card slot cover.

- Hold the camera upside down to prevent the batteries from falling out.

- Insert the batteries and memory card.

- Confirm that the positive (+) and negative (-) battery terminals are oriented correctly and insert the batteries.
- Confirm the correct orientation and slide the memory card in until it clicks into place.

- Close the battery-chamber/memory card slot cover.

### Applicable Batteries

- Two LR6/L40 (AA-size) alkaline batteries (included batteries)
- Two FR6/L91 (AA-size) lithium batteries
- Two EN-MH2 rechargeable Ni-MH (nickel metal hydride) batteries

### Removing the Memory Card

- Turn the camera off and make sure that the power-on lamp and the monitor have turned off, and then open the battery-chamber/memory card slot cover.
- Gently push the memory card into the camera (1) to partially eject the card (2).
  - The camera, batteries, and memory card may be hot immediately after using the camera.

### Turn the Camera On and Set the Display Language, Date, and Time

- Press the power switch to turn on the camera.

- The monitor turns on when the camera is turned on.
- To turn the camera off, press the power switch again.

- Use the multi selector **▲▼** to select the desired language and press the **OK** button.

- Use **▲▼** to select **Yes** and press the **OK** button.

- Use **◀▶** to select your home time zone and press the **OK** button.

- Press **▲** to turn on daylight saving time (☀ is displayed above the map). Press **▼** to turn it off.

- Use **▲▼** to select the date format and press the **OK** button.

- Set the date and time, and press the **OK** button.

- Use **◀▶** to select a field and then use **▲▼** to set the date and time.
- Select the minute field and press the **OK** button to confirm the setting.

- When the confirmation screen is displayed, use **▲▼** to select **Yes** and press the **OK** button.

- Press the **Q** (shooting mode) button.

- Use **▲▼** to select **Easy auto mode** and press the **OK** button.

- The camera enters the shooting mode and you can take images in Easy auto mode.
- While shooting, you can check the battery level indicator and the number of exposures remaining.

## Using the Camera

### Shooting with Easy Auto Mode

- Hold the camera steady.

- Keep fingers and other objects away from the lens, flash, AF-assist illuminator, microphone, and speaker.

- Frame the picture.

- Move the zoom control to change the zoom position.
- When the camera automatically determines the scene mode, the shooting mode icon changes.

- Press the shutter-release button halfway.

- When the subject is in focus, the focus area glows green.
- If the focus area or focus indicator flashes, the camera is unable to focus. Modify the composition and try pressing the shutter-release button halfway again.

- Without lifting your finger, press the shutter-release button the rest of the way down.

- The indicator showing the number of exposures remaining or the indicator showing the maximum movie length flashes while images are being saved or while a movie is being recorded. **Do not open the battery-chamber/memory card slot cover or remove the batteries or memory card** while an indicator is flashing. Doing this could result in loss of data, or in damage to the camera or the memory card.

### Play Back Images

- Press the **▶** (playback) button to enter playback mode.

- Use the multi selector **▲▼◀▶** to select an image to display.

- To return to shooting mode, press the **Q** button or shutter-release button.

- Move the zoom control toward **T** (Q) in full-frame playback mode to zoom in on the image.

- Move the zoom control toward **W** (Q) in full-frame playback mode to display a list of images called "thumbnails".

### Delete Images

- Press the **🗑** (delete) button to delete the image currently displayed in the monitor.

- Use the multi selector **▲▼** to select **Current image** and press the **OK** button.

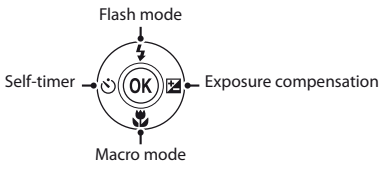
- To exit without deleting, press the **MENU** button.

- Select **Yes** and press the **OK** button.

- Deleted images cannot be recovered.

### Using the Flash and Self-timer

You can use the multi selector to set frequently used functions such as the flash and self-timer. You can set the following functions using **▲▼◀▶** in the shooting screen.



- Flash mode**  
You can select the flash mode to match the shooting conditions.
- Self-timer**  
If you select **ON**, the camera releases the shutter 10 seconds after you press the shutter-release button.
- Macro mode**  
Use macro mode when taking close-up images.
- Exposure compensation**  
You can adjust overall image brightness.

The functions that are available vary with the shooting mode.

## Shooting Features

### Changing the Shooting Mode

The following shooting modes are available.

- Easy auto mode**  
The camera automatically selects the optimum scene mode when you frame an image, making it even easier to take images using settings that suit the scene.
- Scene mode**  
Camera settings are optimized according to the scene that you select.
- Smart portrait**  
When the camera detects a smiling face, you can take an image automatically without pressing the shutter-release button (smile timer). You can also use the skin softening option to smooth the skin tones of human faces.
- Auto mode**  
Used for general shooting. Settings can be adjusted to suit the shooting conditions and the type of shot you want to capture.

- Press the **Q** (shooting mode) button in the shooting screen.

- Use the multi selector **▲▼** to select a shooting mode and press the **OK** button.

### Recording and Playing Back Movies

- Display the shooting screen.

- Check the remaining amount of movie recording time.

- Press the **●** (movie-record) button to start movie recording.

- Press the **●** (movie-record) button again to stop recording.

- Select a movie in full-frame playback mode and press the **OK** button.

- Movies are indicated by the movie options icon.

## Using the Menus

Use the multi selector and **OK** button to navigate the menus. The following menus are available.

- Shooting menu**  
Available by pressing the **MENU** button in the shooting screen. Allows you to change image size and quality, continuous shooting settings, etc.
- Playback menu**  
Available by pressing the **MENU** button when viewing images in full-frame playback mode or thumbnail playback mode. Allows you to edit images, play slide shows, etc.
- Movie menu**  
Available by pressing the **MENU** button in the shooting screen. Allows you to change movie recording settings.
- Setup menu**  
Allows you to adjust basic camera functions such as date and time, display language, etc.

- Press the **MENU** (menu) button.

- The menu is displayed.

- Press the multi selector **◀**.

- The current menu icon is displayed in yellow.

- Use **▲▼** to select the desired menu icon.

- The menu is changed.

- Press the **OK** button.

- The menu options become selectable.

- Use **▲▼** to select a menu option, and then press the **OK** button.

- The settings for the option you selected are displayed.
- The setting you selected is applied.
- When you are finished using the menu, press the **MENU** button.

- Certain menu options cannot be set depending on the current shooting mode or the state of the camera.
- When a menu is displayed, you can switch to shooting mode by pressing the shutter-release button, **Q** (shooting mode) button, or **●** (movie-record) button.

## Using ViewNX 2

Install ViewNX 2 to upload, view, edit, and share photos and movies.

### Installing ViewNX 2

An Internet connection is required. For system requirements and other information, see the Nikon website for your region.

- Download the ViewNX 2 installer.

Start the computer and download the installer from: <http://nikonimglib.com/vnrx/>

- Double-click the downloaded file.

- Follow the on-screen instructions.

- Exit the installer.

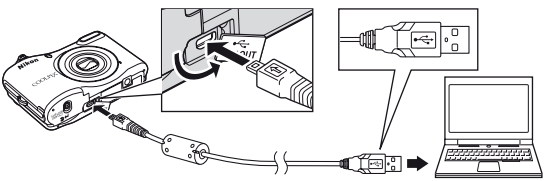
Click **Yes** (Windows) or **OK** (Mac).

### Transferring Images to the Computer

- Choose how images will be copied to the computer.

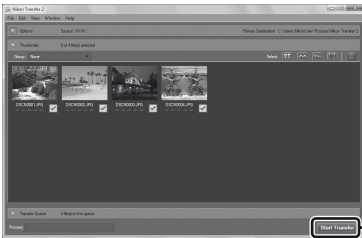
Choose one of the following methods:

- SD card slot:** If your computer is equipped with an SD card slot, the card can be inserted directly in the slot.
- SD card reader:** Connect a card reader (available separately from third-party suppliers) to the computer and insert the memory card.
- Direct USB connection:** Turn the camera off and ensure that the memory card is inserted in the camera. Connect the camera to the computer using the USB cable. Turn the camera on.



- Transfer images to the computer.

- Click **Start Transfer**.



- At default settings, all the images on the memory card will be copied to the computer.

- Terminate the connection.

- If you are using a card reader or card slot, choose the appropriate option in the computer operating system to eject the removable disk corresponding to the memory card, and then remove the card from the card reader or card slot. If the camera is connected to the computer, turn the camera off and disconnect the USB cable.

## Troubleshooting

If the camera fails to function as expected, check the list of common problems below before consulting your retailer or Nikon-authorized service representative.

### The camera is on but does not respond.

Wait for recording to end.

If the problem persists, turn the camera off.

If the camera does not turn off, remove and reinsert the battery or batteries or, if you are using an AC adapter, disconnect and reconnect the AC adapter. Note that although any data currently being recorded will be lost, data that have already been recorded will not be affected by removing or disconnecting the power source.

### Camera turns off without warning.

- The camera automatically turns off to save power (auto off function).
- The camera or batteries have become too cold and cannot operate properly.
- The inside of the camera has become hot. Leave the camera off until the inside of the camera has cooled, and then try turning it on again.

### Monitor is blank.

- The camera is off.
- The batteries are exhausted.
- The camera has entered standby mode to save power. Press the power switch, shutter-release button, **Q** button, **Q** button, or **●** (movie-record) button.

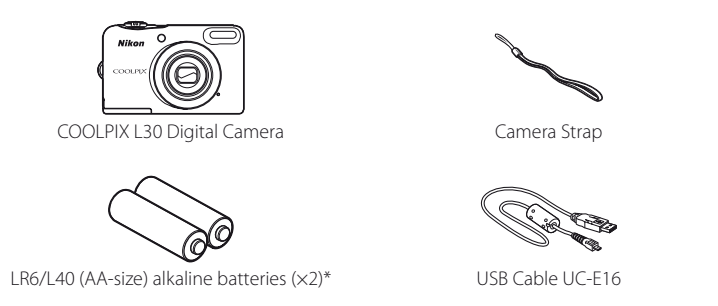
### Camera becomes hot.

The camera may become hot when used for an extended period of time to shoot movies or send images using an Eye-Fi card, or when used in a hot environment; this is not a malfunction.



# Confirming the Package Contents

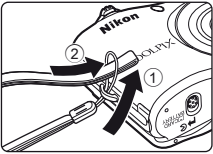
In the event that any items are missing, please contact the store where you purchased the camera.



- User's Manual (this manual)
- Warranty

- The included batteries are for trial use only.
- A memory card is not included with the camera.

## Attaching the Camera Strap



# Information and Precautions

## Nikon User Support

Visit the site below to register your camera and keep up-to-date with the latest product information.  
You will find answers to frequently asked questions (FAQs) and can contact us for technical assistance.

<http://www.europe-nikon.com/support>

## Use Only Nikon Brand Electronic Accessories

Nikon COOLPIX cameras are designed to the highest standards and include complex electronic circuitry. Only Nikon brand electronic accessories (including battery chargers, batteries, AC adapters, and cables) certified by Nikon specifically for use with this Nikon digital camera are engineered and proven to operate within the operational and safety requirements of this electronic circuitry.

THE USE OF NON-NIKON ELECTRONIC ACCESSORIES COULD DAMAGE THE CAMERA AND MAY VOID YOUR NIKON WARRANTY.

For more information about Nikon brand accessories, contact a local authorized Nikon dealer.

## Before Taking Important Pictures

Before taking pictures on important occasions (such as at weddings or before taking the camera on a trip), take a test shot to ensure that the camera is functioning normally. Nikon will not be held liable for damages or lost profits that may result from product malfunction.

## About the Manuals

- No part of the manuals included with this product may be reproduced, transmitted, transcribed, stored in a retrieval system, or translated into any language in any form, by any means, without Nikon's prior written permission.
- Nikon reserves the right to change the specifications of the hardware and software described in these manuals at any time and without prior notice.
- Nikon will not be held liable for any damages resulting from the use of this product.
- While every effort was made to ensure that the information in these manuals is accurate and complete, we would appreciate it were you to bring any errors or omissions to the attention of the Nikon representative in your area (address provided separately).

## Notice Concerning Prohibition of Copying or Reproduction

Note that simply being in possession of material that was digitally copied or reproduced by means of a scanner, digital camera or other device may be punishable by law.

### • Items prohibited by law from being copied or reproduced

Do not copy or reproduce paper money, coins, securities, government bonds or local government bonds, even if such copies or reproductions are stamped "Sample."The copying or reproduction of paper money, coins, or securities which are circulated in a foreign country is prohibited. Unless the prior permission of the government was obtained, the copying or reproduction of unused postage stamps or post cards issued by the government is prohibited.

The copying or reproduction of stamps issued by the government and of certified documents stipulated by law is prohibited.

### • Cautions on certain copies and reproductions

The government has issued cautions on copies or reproductions of securities issued by private companies (shares, bills, checks, gift certificates, etc.), commuter passes, or coupon tickets, except when a minimum of necessary copies are to be provided for business use by a company. Also, do not copy or reproduce passports issued by the government, licenses issued by public agencies and private groups, ID cards and tickets, such as passes and meal coupons.

### • Comply with copyright notices

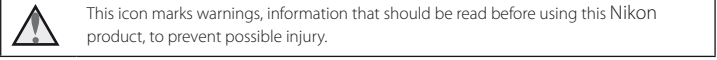
The copying or reproduction of copyrighted creative works such as books, music, paintings, woodcut prints, maps, drawings, movies, and photographs is governed by national and international copyright laws. Do not use this product for the purpose of making illegal copies or to infringe copyright laws.

## Disposing of Data Storage Devices

Please note that deleting images or formatting data storage devices such as memory cards or built-in camera memory does not completely erase the original image data. Deleted files can sometimes be recovered from discarded storage devices using commercially available software, potentially resulting in the malicious use of personal image data. Ensuring the privacy of such data is the user's responsibility.  
Before discarding a data storage device or transferring ownership to another person, erase all data using commercial deletion software, or format the device and then completely refill it with images containing no private information (for example, pictures of empty sky). Be sure to also replace any pictures selected for the **Select an image** option in the **Welcome screen** setting in the setup menu. Care should be taken to avoid injury or damage to property when physically destroying data storage devices.

# For Your Safety

To prevent damage to your Nikon product or injury to yourself or to others, read the following safety precautions in their entirety before using this equipment. Keep these safety instructions where all those who use the product will read them.



This icon marks warnings, information that should be read before using this Nikon product, to prevent possible injury.

## WARNINGS

### ⚠ Turn off in the event of malfunction

Should you notice smoke or an unusual smell coming from the camera or AC adapter, unplug the AC adapter and remove the batteries immediately, taking care to avoid burns. Continued operation could result in injury. After removing or disconnecting the power source, take the equipment to a Nikon-authorized service representative for inspection.

### ⚠ Do not disassemble

Touching the internal parts of the camera or AC adapter could result in injury. Repairs should be performed only by qualified technicians. Should the camera or AC adapter break open as the result of a fall or other accident, take the product to a Nikon-authorized service representative for inspection, after unplugging the product and/or removing the batteries.

⚠ **Do not use the camera or AC adapter in the presence of flammable gas**  
Do not use electronic equipment in the presence of flammable gas, as this could result in explosion or fire.

### ⚠ Handle the camera strap with care

Never place the strap around the neck of an infant or child.

### ⚠ Keep out of reach of children

Particular care should be taken to prevent infants from putting the batteries or other small parts into their mouths.

⚠ **Do not remain in contact with the camera, battery charger, or AC adapter for extended periods while the devices are on or in use**  
Parts of the devices become hot. Leaving the devices in direct contact with the skin for extended periods may result in low-temperature burns.

# For Your Safety

⚠ **Do not leave the product where it will be exposed to extremely high temperatures, such as in an enclosed automobile or in direct sunlight**  
Failure to observe this precaution could cause damage or fire.

## ⚠ Observe caution when handling batteries

Batteries may leak or explode if improperly handled. Observe the following precautions when handling batteries for use in this product:

- Before replacing the batteries, turn the product off. If you are using an AC adapter, be sure it is unplugged.
- Use only the batteries approved for use in this product. Do not combine old and new batteries or batteries of different makes or types.
- If Nikon rechargeable Ni-MH batteries EN-MH2 (EN-MH2-B2 or EN-MH2-B4) are purchased separately, charge and use each of them as a set. Do not combine batteries from different pairs.
- The EN-MH2 rechargeable batteries are for use with Nikon digital cameras only, and are compatible with COOLPIX L30.
- Insert batteries in the correct orientation.
- Do not short or disassemble batteries or attempt to remove or break battery insulation or casing.
- Do not expose batteries to flame or to excessive heat.
- Do not immerse in or expose to water.
- Do not transport or store with metal objects such as necklaces or hairpins.
- Batteries are prone to leakage when fully discharged. To avoid damage to the product, be sure to remove the batteries when no charge remains.
- Discontinue use immediately should you notice any change in the batteries, such as discoloration or deformation.
- If liquid from damaged batteries comes in contact with clothing or skin, rinse immediately with plenty of water.

## ⚠ Observe the following precautions when handling the Battery Chargers (available separately)

- Keep dry. Failure to observe this precaution could result in fire or electric shock.
- Dust on or near the metal parts of the plug should be removed with a dry cloth. Continued use could result in fire.
- Do not handle the power cable or go near the battery charger during lightning storms. Failure to observe this precaution could result in electric shock.
- Do not damage, modify, forcibly tug or bend the power cable, place it under heavy objects, or expose it to heat or flame. Should the insulation be damaged and the wires become exposed, take it to a Nikon-authorized service representative for inspection. Failure to observe these precautions could result in fire or electric shock.
- Do not handle the plug or battery charger with wet hands. Failure to observe this precaution could result in electric shock.
- Do not use with travel converters or adapters designed to convert from one voltage to another or with DC-to-AC inverters. Failure to observe this precaution could damage the product or result in overheating or fire.

## ⚠ Use appropriate cables

When connecting cables to the input and output jacks, use only the cables provided or sold by Nikon for the purpose, to maintain compliance with product regulations.

## ⚠ Handle moving parts with care

Be careful that your fingers or other objects are not pinched by the lens cover or other moving parts.

## ⚠ Observe caution when using the flash

Using the flash close to your subject's eyes could cause temporary visual impairment. The flash should be no less than 1 m (3 ft 4 in.) from the subject. Particular care should be observed when photographing infants.

⚠ **Do not operate the flash with the flash window touching a person or object**  
Failure to observe this precaution could result in burns or fire.

## ⚠ Avoid contact with liquid crystal

Should the monitor break, care should be taken to avoid injury caused by broken glass and to prevent liquid crystal from the monitor touching the skin or entering the eyes or mouth.

## ⚠ Turn the power off when using inside an airplane or the hospital

Turn the power off while inside the airplane during take off or landing.  
Do not use wireless network functions while in the air.  
Follow the instructions of the hospital when using while in a hospital.  
The electromagnetic waves emitted by this camera may disrupt the electronic systems of the airplane or the instruments of the hospital. If you are using an Eye-Fi card, remove it from the camera before boarding an aircraft or entering a hospital.

# Warranty Terms - Nikon Europe Service Warranty

Dear Nikon Customer,  
We thank you for your purchasing this Nikon product. Should your Nikon product require warranty service, please contact the dealer from whom it was purchased or a member of our authorized service network within the sales territory of Nikon Europe BV (Europe/ Africa and Russia).

In order to avoid any unnecessary inconvenience, we advise you to read the user manuals carefully before contacting the dealer or our authorized service network.  
Your Nikon equipment is guaranteed against any manufacturing defects for one full year from the date of original purchase. If during this period of guarantee the product proves defective due to improper material or workmanship, our authorized service network within the sales territory of Nikon Europe BV will, without charge for labor and parts, repair the product in the terms and conditions set as below. Nikon reserves the right (at its sole discretion) to replace or repair the product.

- This warranty is only provided upon presentation of the completed warranty card and original invoice or purchase receipt indicating the date of purchase, product type and dealer's name, together with the product. Nikon reserves the right to refuse free-of-charge warranty service if the above documents cannot be presented or if the information contained in it is incomplete or illegible.
- This warranty will not cover:
  - necessary maintenance and repair or replacement of parts due to normal wear and tear.
  - modifications to upgrade the product from its normal purpose as described in user manuals, without the prior written consent of Nikon.
  - transport costs and all risks of transport relating directly or indirectly to the warranty of the products.
  - any damage resulting from modifications or adjustments which may be made to the product, without the prior written consent of Nikon, in order to comply with local or national technical standards in force in any other country than the ones for which the product was originally designed and/or manufactured.
- The warranty will not be applicable in the case of:
  - damage caused by misuse including but not limited to failure to use the product for its normal purpose or according to the user instructions on the proper use and maintenance, and to installation or use of the product inconsistent with the safety standards in force in the country where it is used.
  - damage caused by accidents including but not limited to lightning, water, fire, misuse or neglect.
  - defacing, illegibility or removal of the model or serial number on the product.
  - damage resulting from repairs or adjustments which have been conducted by unauthorized service organizations or persons.
  - defects in any system into which the product is incorporated or with which it is used.

- This service warranty does not affect the consumer's statutory rights under applicable national laws in force, nor the consumer's right against the dealer arising from their sales/purchase contract.

**Notice:** An overview of all authorized Nikon Service Stations can be found online by following this Link (URL = <http://www.europe-nikon.com/service/> ).

# Trademark Information

- Microsoft, Windows and Windows Vista are either registered trademarks or trademarks of Microsoft Corporation in the United States and/or other countries.
- Mac and OS X are trademarks or registered trademarks of Apple Inc. in the U.S. and other countries.
- Adobe and Acrobat are registered trademarks of Adobe Systems Inc.
- SDXC, SDHC and SD Logos are trademarks of SD-3C, LLC.
- PictBridge is a trademark.
- All other trade names mentioned in this manual or the other documentation provided with your Nikon product are trademarks or registered trademarks of their respective holders.

## FreeType License (FreeType2)

Portions of this software are copyright © 2012 The FreeType Project (<http://www.freetype.org>). All rights reserved.

## MIT License (HarfBuzz)

Portions of this software are copyright © 2014 The HarfBuzz Project (<http://www.freedesktop.org/wiki/Software/HarfBuzz>). All rights reserved.

# Caring for the Product

## The Camera

### ☑ Do Not Drop

The product may malfunction if subjected to strong shock or vibration.

### ☑ Keep away from Strong Magnetic Fields

Do not use or store this device in the vicinity of equipment that generates strong electromagnetic radiation or magnetic fields. Strong static charge or the magnetic fields produced by equipment such as radio transmitters could interfere with the monitor, damage data saved on the memory card, or affect the product's internal circuitry.

### ☑ Notes About the Monitor

- Monitors and electronic viewfinders are constructed with extremely high precision; at least 99.99% of pixels are effective, with no more than 0.01% being missing or defective. Hence while these displays may contain pixels that are always lit (white, red, blue, or green) or always off (black), this is not a malfunction and has no effect on images recorded with the device.
- Images in the monitor may be difficult to see under bright lighting.
- The monitor is lit by an LED backlight. Should the monitor begin to dim or flicker, contact your Nikon-authorized service representative.

## Memory Cards

### ☑ Formatting Memory Cards

The first time you insert a memory card that has been used in another device into this camera, make sure to format it with this camera. Insert the card into the camera, press the **MENU** button, and select **Format card** in the setup menu.

# Specifications


Nikon COOLPIX L30 Digital Camera	
Type	Compact digital camera
Number of effective pixels	20.1 million
Image sensor	1/2.3-in. type CCD; approx. 20.48 million total pixels
Lens	NIKKOR lens with 5 $\times$ optical zoom
Focal length	4.6–23.0 mm (angle of view equivalent to that of 26–130 mm lens in 35mm [135] format)
f/-number	f/3.2–6.5
Construction	6 elements in 5 groups
Digital zoom magnification	Up to 4 $\times$ (angle of view equivalent to that of approx. 520 mm lens in 35mm [135] format)
Motion blur reduction	Electronic VR (still pictures), motion detection (still pictures)
Autofocus (AF)	Contrast-detect AF
Focus range	<ul style="list-style-type: none"><li>[W]: Approx. 50 cm (1 ft 8 in.)–<math>\infty</math>; [T]: Approx. 80 cm (2 ft 8 in.)–<math>\infty</math></li><li>Macro mode: Approx. 10 cm (4 in.) (wide-angle position relative to –<math>\infty</math>)</li></ul> (All distances measured from center of front surface of lens)
Focus-area selection	Center, face detection
Monitor	7.5 cm (3-in.), approx. 230k-dot, TFT LCD with anti-reflection coating and 5-level brightness adjustment
Frame coverage (shooting mode)	Approx. 98% horizontal and 98% vertical (compared to actual picture)
Frame coverage (playback mode)	Approx. 98% horizontal and 98% vertical (compared to actual picture)
Storage	
Media	Internal memory (approx. 25 MB), SD/SDHC/SDXC memory card
File system	DCF, Exif 2.3, and DPOF compliant
File formats	Still pictures: JPEG Movies: AVI (Motion-JPEG compliant)

Image size (pixels)	<ul style="list-style-type: none"><li>20M (High) [5152 <math>\times</math> 3864]★</li><li>20M [5152 <math>\times</math> 3864]</li><li>10M [3648 <math>\times</math> 2736]</li><li>4M [2272 <math>\times</math> 1704]</li><li>2M [1600 <math>\times</math> 1200]</li><li>VGA [640 <math>\times</math> 480]</li><li>16:9 [1520 <math>\times</math> 2880]</li></ul>
ISO sensitivity (Standard output sensitivity)	ISO 80–1600
Exposure	
Metering mode	Matrix, center-weighted (digital zoom less than 2 $\times$ ), spot (digital zoom 2 $\times$ or more)
Exposure control	Programmed auto exposure and exposure compensation (–2.0 ~ +2.0 EV in steps of 1/3 EV)
Shutter	Mechanical and charge-coupled electronic shutter
Speed	<ul style="list-style-type: none"><li>1/2000–1 s</li><li>4 s (<b>Fireworks show</b> scene mode)</li></ul>
Aperture	Electronically-controlled ND filter (–2.6 AV) selection
Range	2 steps (f/3.2 and f/8 [W])
Self-timer	Approx. 10 s
Flash	
Range (approx.) (ISO sensitivity: Auto)	[W]: 0.5–4.3 m (1 ft 8 in.–14 ft) [T]: 0.8–2.1 m (2 ft 8 in.–6 ft 10 in.)
Flash control	TTL auto flash with monitor preflashes
Interface	Hi-Speed USB
Data transfer protocol	MTP, PTP
Video output	Can be selected from <b>NTSC</b> and <b>PAL</b>
I/O terminal	Audio/video (A/V) output; digital I/O (USB)
Supported languages	Arabic, Bengali, Chinese (Simplified and Traditional), Czech, Danish, Dutch, English, Finnish, French, German, Greek, Hindi, Hungarian, Indonesian, Italian, Japanese, Korean, Marathi, Norwegian, Persian, Polish, Portuguese (European and Brazilian), Romanian, Russian, Spanish, Swedish, Tamil, Telugu, Thai, Turkish, Ukrainian, Vietnamese

Power sources	<ul style="list-style-type: none"><li>Two LR6/L40 (AA-size) alkaline batteries</li><li>Two FR6/L91 (AA-size) lithium batteries</li><li>Two EN-MH2 rechargeable Ni-MH batteries (available separately)</li><li>AC Adapter EH-65A (available separately)</li></ul>
Battery life <sup>1</sup>	
Still pictures	<ul style="list-style-type: none"><li>Approx. 320 shots when using alkaline batteries</li><li>Approx. 950 shots when using lithium batteries</li><li>Approx. 570 shots when using EN-MH2 batteries</li></ul>
Movies (actual battery life for recording) <sup>2</sup>	<ul style="list-style-type: none"><li>Approx. 1 h 5 min when using alkaline batteries</li><li>Approx. 2 h 45 min when using lithium batteries</li><li>Approx. 1 h 40 min when using EN-MH2 batteries</li></ul>
Tripod socket	1/4 (ISO 1222)
Dimensions (W $\times$ H $\times$ D)	Approx. 95.4 $\times$ 60.3 $\times$ 29.0 mm (3.8 $\times$ 2.4 $\times$ 1.2 in.) (excluding projections)
Weight	Approx. 164 g (5.8 oz) (including batteries and SD memory card)
Operating environment	
Temperature	0°C–40°C (32°F–104°F)
Humidity	85% or less (no condensation)

- Unless otherwise stated, all figures assume fresh LR6/L40 (AA-size) alkaline batteries and an ambient temperature of 23  $\pm$  3°C (73.4  $\pm$  5.4°F) as specified by the Camera and Imaging Products Association (CIPA).

<sup>1</sup> Battery life may vary depending on conditions of use, such as the interval between shots or the length of time that menus and images are displayed.

The included batteries are for trial use only. Figures listed for lithium batteries are measured using commercially available FR6/L91 (AA-size) Energizer(R) Ultimate Lithium batteries.

<sup>2</sup> Individual movie files cannot exceed 2 GB in size or 29 minutes in length. Recording may end before this limit is reached if camera temperature becomes elevated.

- Nikon will not be held liable for any errors this manual may contain.
- The appearance of this product and its specifications are subject to change without notice.

# Approved Memory Cards

The following Secure Digital (SD) memory cards have been tested and approved for use in this camera.

- Memory cards with an SD Speed Class rating of 6 or faster are recommended for recording movies. When using a memory card with a lower Speed Class rating, movie recording may stop unexpectedly.

	SD memory card	SDHC memory card <sup>2</sup>	SDXC memory card <sup>3</sup>
SanDisk	2 GB <sup>1</sup>	4 GB, 8 GB, 16 GB, 32 GB	64 GB, 128 GB
TOSHIBA	–	4 GB, 8 GB, 16 GB, 32 GB	64 GB
Panasonic	2 GB <sup>1</sup>	4 GB, 8 GB, 16 GB, 32 GB	64 GB
Lexar	–	4 GB, 8 GB, 16 GB, 32 GB	64 GB, 128 GB

<sup>1</sup> If the memory card will be used with a card reader or similar device, make sure that the device supports 2 GB cards.

<sup>2</sup> SDHC compliant.

If the memory card will be used with a card reader or similar device, make sure that the device supports SDHC.

<sup>3</sup> SDXC compliant.

If the memory card will be used with a card reader or similar device, make sure that the device supports SDXC.

- Contact the manufacturer for details on the above cards. We cannot guarantee camera performance when using memory cards made by other manufacturers.

