

Nikon

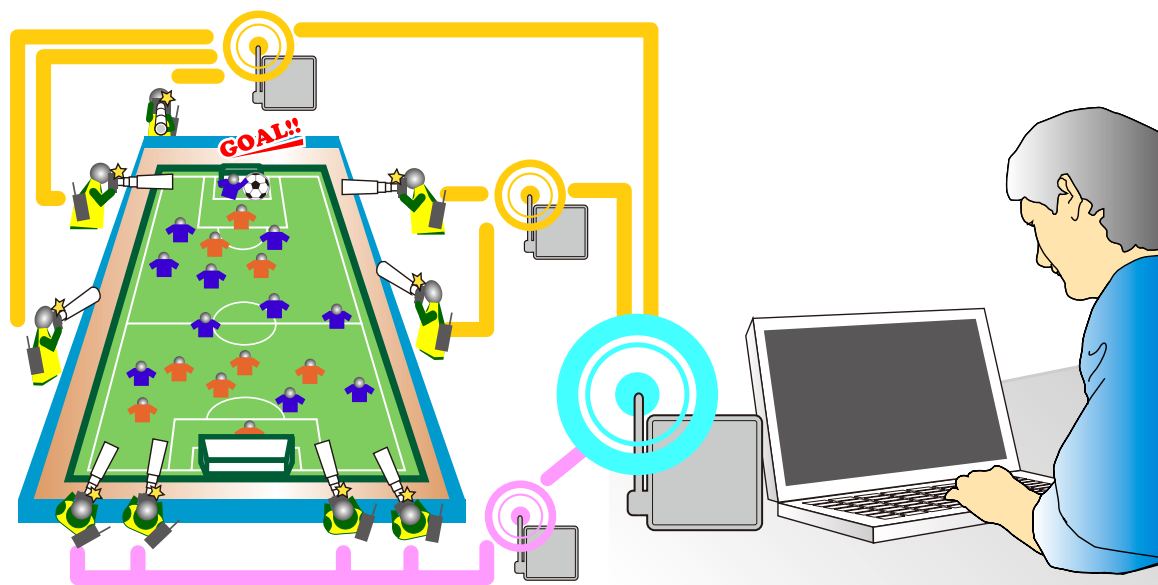
En Thumbnail Select Mode

This document describes how to use the WT-4 wireless transmitter in thumbnail select mode. Photographs taken with **Thumbnail select mode** selected for **Mode** are saved both to the camera memory card and to the WT-4 wireless transmitter's internal memory. Small thumbnail previews of the copies on the WT-4 are transmitted to the computer for display in the supplied Thumbnail Selector software, making it possible to select photographs for transfer to the computer.

This manual is for use with both Windows and Macintosh. While the majority of the illustrations come from Windows Vista Ultimate, save where otherwise noted the operations described are the same in other operating systems. Depending on the operating system used, the dialogs and menus may differ from slightly from those shown here. Some illustrations are composites.

Example

Suppose multiple photographers using cameras equipped with WT-4 wireless transmitters are stationed around the field at a soccer game, recording the action from different angles. Thumbnail previews are transmitted over a wireless network to a computer, where Thumbnail Selector can display photographs from up to five cameras in real time. Workers at the computer can select the thumbnails they prefer and upload only these selected images to the computer.



Thumbnail Selector

Thumbnail Selector displays the images stored in the WT-4 as small thumbnail previews. Photographs from up to five cameras can be previewed instantly and selected for upload as desired. For more information, see the online help for Thumbnail Selector.

Internal Memory

The WT-4 is equipped with 1 GB of internal memory. Only the most recent photographs are stored; if memory is full, the oldest photographs will be deleted as necessary to make room for new pictures. The photographs on the WT-4 are not affected when a new memory card is inserted in the camera, and memory cards can be freely exchanged without concern for whether the images they contain have been uploaded to the computer. Photographs can be deleted from the WT-4 by formatting internal memory. All photographs stored in internal memory will be deleted.

If a large number of photographs are taken in a single burst, some time may be required to copy the pictures to internal memory. The number of photographs remaining to be copied can be viewed by selecting **Wireless transmitter** in the setup menu after shooting.

The camera memory card access lamp will light while photographs are being copied to internal memory. To prevent damage to internal memory, do not remove the battery from the camera or WT-4 or disconnect the AC adapter or USB cable while the access lamp is lit. If the WT-4 is turned off while the access lamp is lit, the WT-4 will remain on until all pictures have been transferred to internal memory.

Upload Pictures to a Host Computer

Connect the WT-4 to the host in thumbnail select mode.

1

Connect the WT-4 as described above and select **Thumbnail select mode** for **Wireless transmitter > Mode**. Thumbnail Selector will start automatically.

Starting Thumbnail Selector

To start Thumbnail Selector manually:

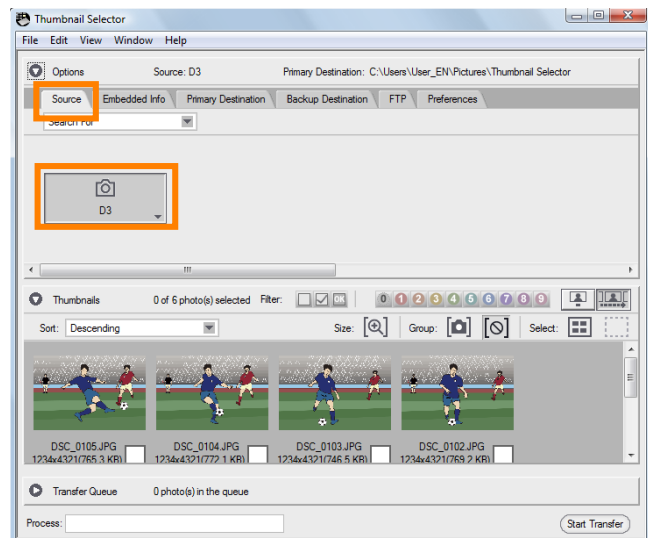
- **Windows:** Double-click the **Thumbnail Selector** shortcut on the desktop or display the Start menu and select **Thumbnail Selector** from the program list.
- **Macintosh:** Click the **Thumbnail Selector** icon in the Dock (if available) or open the "Applications/Nikon Software/Thumbnail Selector" folder and double-click the **Thumbnail Selector** icon.

The Camera Clock

At default settings, the computer and camera clocks will be synchronized then the host computer detects the camera. To prevent the camera clock from being reset, open the **Preferences** panel and remove the check from **Synchronize camera date and time to computer when camera is connected (supported cameras only)**.

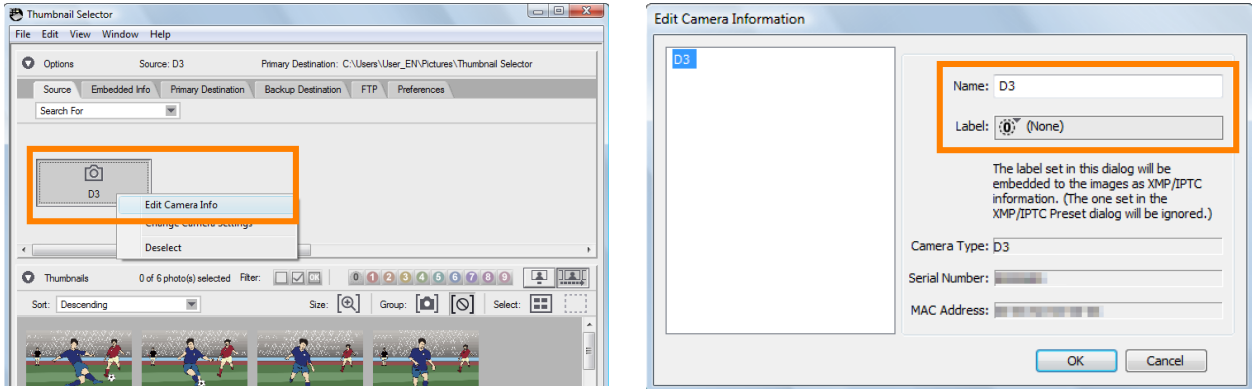
2

Choose a camera in the **Source** panel. Small previews of the pictures on the WT-4 will appear in the thumbnail area.



3

Right click the camera icon in the **Source** panel and select **Edit Camera Info**. Enter a name and choose a label for the camera and then click **OK**. The selected label will be displayed on the images in the thumbnail list.

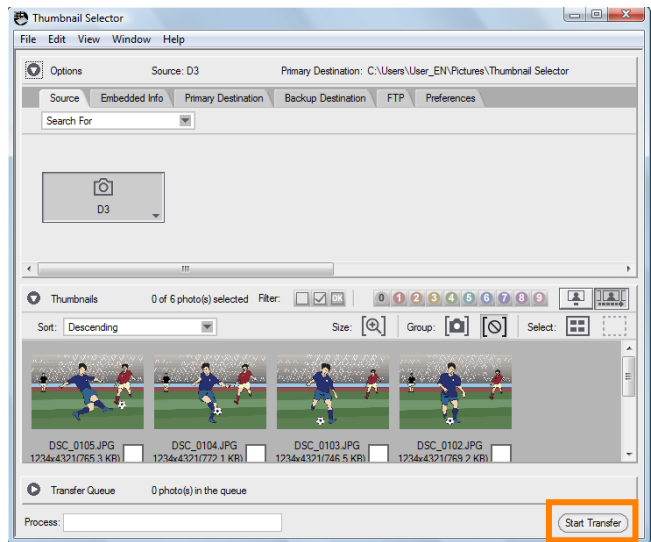


4

Take photographs. The new pictures will be displayed in the thumbnail list.

5

Click **Start Transfer**. The button will change to **Stop Transfer**.



6

Click the thumbnail for a photograph that you wish to transfer to the computer. The selected thumbnail will be highlighted.



7

Click the selected thumbnail again or press the spacebar. A check-mark will appear on the selected photograph and upload will begin immediately.



At default settings, photographs are uploaded to a “WT-4” folder in the “Picture” (Windows Vista/Mac OS X) or “My Pictures” (Windows XP) folder. For more information on using Thumbnail Selector, see online help.

8

Turn the WT-4 off when transfer is complete. Wait for the **POWER** LED to turn from green to yellow and then go out, and then disconnect the USB cable.

Network Status

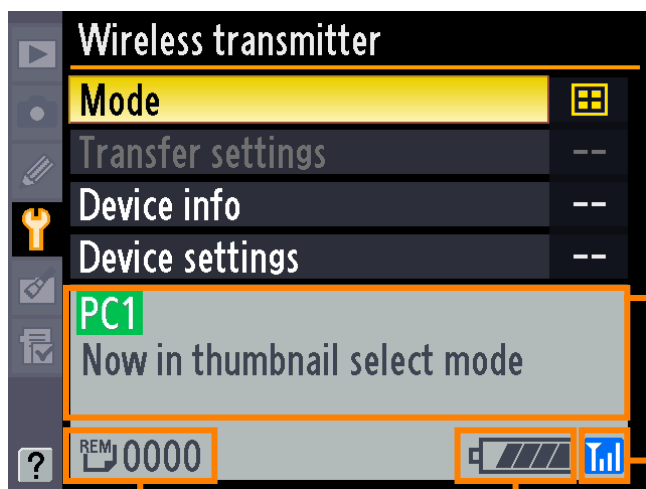
The status of the link between the host and the WT-4 is shown by the status LEDs and by the display in the top level of the wireless transmitter menu.

The Status LEDs

The **POWER** LED lights when the WT-4 is on. Signal quality is shown by the **LINK** LED: the faster the LED blinks, the better the signal and the faster data can be transmitted. The **ERROR** LED blinks to show that an error has occurred.

Status	POWER	LINK	ERROR
WT-4 off	● (off)	● (off)	● (off)
USB cable not connected	○ (on)	● (off)	● (off)
Connecting to host	○ (on)	○ (on)	● (off)
Waiting to send or sending data	○ (on)	⚙️ (blinks)	● (off)
Connection error	○ (on)	● (off)	⚙️ (blinks)
WT-4 hardware or battery malfunction.	⚙️ (blinks)	⚙️ (blinks)	⚙️ (blinks)

Network status can also be viewed in the top level of the wireless transmitter menu.



Status area: The status of the connection to the host. The host name is displayed in green when a connection is established. Any errors that prevent the camera from connecting to the host are also displayed here.

Signal strength: This icon shows wireless signal strength. It is displayed in red when no signal can be detected. For maximum signal strength, ensure a clear line of sight between the WT-4 antenna and the wireless LAN adapter or access point. A 📶 icon is displayed when the WT-4 is connected via Ethernet.

REM 0000: The number of shots that have yet to be copied to the WT-4.

Battery level: A five-level display showing the charge state of the battery in the WT-4.