

# D3500

## User's Manual (with Warranty)

- Read this manual thoroughly before using the camera.
- To ensure proper use of the camera, be sure to read "For Your Safety" (overleaf).
- After reading this manual, keep it in a readily accessible place for future reference.

No reproduction in any form of this manual, in whole or in part (except for brief quotation in critical articles or reviews), may be made without written authorization from NIKON CORPORATION.

NIKON CORPORATION  
© 2018 Nikon Corporation



AMA16867  
Printed in Europe  
SB8H01(11)/GMB44511-01

En

Nikon Europe Service Warranty Card	
Model name <b>Nikon D3500</b>	Serial No. Purchase date
Name and address of customer	
Dealer	
Distributor Nikon Europe B.V. Tripolis 100, Burgenweeshuispad 101, 1076 ER Amsterdam, The Netherlands	Manufacturer NIKON CORPORATION Shinagawa Intercity Tower C, 2-15-3, Konan, Minato-ku, Tokyo 108-6290 Japan

### Warranty Terms - Nikon Europe Service Warranty

Dear Nikon Customer,  
We thank you for your purchasing this Nikon product. Should your Nikon product require warranty service, please contact the dealer from whom it was purchased or a member of our authorized service network within the sales territory of Nikon Europe B.V. (e.g. Europe/Russia/others). See details under:  
<http://www.europe-nikon.com/support>

In order to avoid any unnecessary inconvenience, we advise you to read the user manuals carefully before contacting the dealer or our authorized service network.

Your Nikon equipment is guaranteed against any manufacturing defects for one full year from the date of original purchase. If during this period of guarantee the product proves defective due to improper material or workmanship, our authorized service network within the sales territory of Nikon Europe B.V. will, without charge for labor and parts, repair the product in the terms and conditions set as below. Nikon reserves the right (at its sole discretion) to replace or repair the product.

- This warranty is only provided upon presentation of the completed warranty card and original invoice or purchase receipt indicating the date of purchase, product type and dealer's name, together with the product. Nikon reserves the right to refuse free-of-charge warranty service if the above documents cannot be presented or if the information contained in it is incomplete or illegible.
- This warranty will not cover:
  - necessary maintenance and repair or replacement of parts due to normal wear and tear.
  - modifications to upgrade the product from its normal purpose as described in user manuals, without the prior written consent of Nikon.
  - transport costs and all risks of transport relating directly or indirectly to the warranty of the products.
  - any damage resulting from modifications or adjustments which may be made to the product, without the prior written consent of Nikon, in order to comply with local or national technical standards in force in any other country than the ones for which the product was originally designed and/or manufactured.

- The warranty will not be applicable in the case of:
  - damage caused by misuse including but not limited to failure to use the product for its normal purpose or according to the user instructions on the proper use and maintenance, and to installation or use of the product inconsistent with the safety standards in force in the country where it is used.
  - damage caused by accidents including but not limited to lightning, water, fire, misuse or neglect.
  - defacing, illegibility or removal of the model or serial number on the product.
  - damage resulting from repairs or adjustments which have been conducted by unauthorized service organizations or persons.
  - defects in any system into which the product is incorporated or with which it is used.

- This service warranty does not affect the consumer's statutory rights under applicable national laws in force, nor the consumer's right against the dealer arising from their sales/purchase contract.

**Notice:** An overview of all authorized Nikon Service Stations can be found online by following this Link  
(URL = <http://www.europe-nikon.com/service/>).

### Package Contents

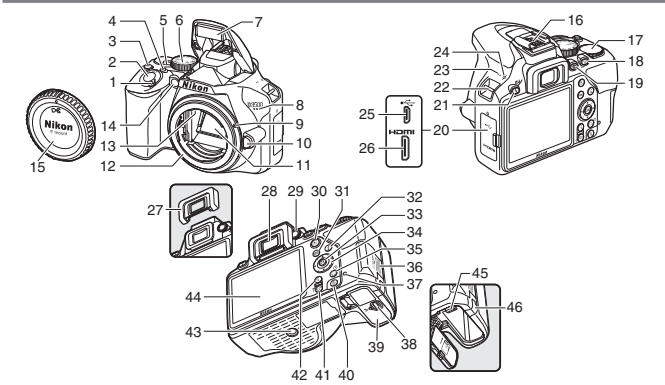
- D3500 camera
- AN-DC3 strap
- DK-25 rubber eyecup (comes attached to camera)
- User's Manual (this sheet)
- BF-1B body cap
- Warranty (see left)
- EN-EL14a rechargeable Li-ion battery (with terminal cover)
- MH-24 battery charger (plug adapter supplied in countries or regions where required; shape depends on country of sale)

Memory cards are sold separately. Purchasers of lens kits should confirm that the package contains a lens (manuals for the lens may also be provided).

with **WARRANTY**

D3500 Model Name: N1718  
Nikon User Support  
Visit the site below to register your camera and keep up-to-date with the latest product information. You will find answers to frequently asked questions (FAQs) and can contact us for technical assistance.  
<http://www.europe-nikon.com/support>

## A The Camera Body



- |  |   |
|--|---|
| 1 Power switch                               | 24 Focal plane mark (⇄)                               |
| 2 Shutter-release button                     | 25 USB connector                                      |
| 3  button                                    | 26 HDMI connector                                     |
| 4 Movie-record button                        | 27 Rubber eyecup (comes attached to camera)           |
| 5 Live view switch                           | 28 Viewfinder eyepiece                                |
| 6 Mode dial                                  | 29 Diopter adjustment control                         |
| 7 Built-in flash                             | 30  button  |
| 8 Microphone (monaural)                      | 31 MENU button  |
| 9 Mounting mark                              | 32  button  |
| 10 Lens release button                       | 33  button  |
| 11 Mirror                                    | 34 Multi selector                                     |
| 12 Lens mount                                | 35  button  |
| 13 CPU contacts                              | 36 Memory card slot cover                             |
| 14 AF-assist illuminator                     | 37 Memory card access lamp                            |
| Self-timer lamp                              | 38 Battery-chamber cover latch                        |
| Red-eye reduction lamp                       | 39 Battery-chamber cover                              |
| 15 Body cap                                  | 40  button  |
| 16 Accessory shoe (for optional flash units) | 41  button  |
| 17 Command dial                              | 42  button  |
| 18  button                                   | 43 Tripod socket                                      |
| 19  (information) button                     | 44 Monitor  |
| 20 Connector cover                           | 45 Battery latch                                      |
| 21  button                                   | 46 Power connector cover for optional power connector |
| 22 Eyelets for camera strap                  |   |
| 23 Speaker                                   |   |

### The Multi Selector

In this manual, operations using the multi selector are represented by icons.

- : Press the multi selector up
- : Press the multi selector down
- : Press the multi selector left
- : Press the multi selector right
- button: select highlighted item

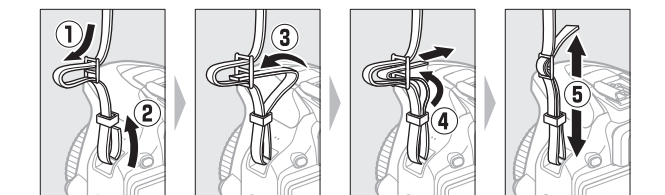
### GUIDE Mode

When the mode dial is rotated to **GUIDE**, you can shoot, view, retouch, and delete photographs and set up the camera using a convenient on-screen guide. See the online camera manual for more information.

## B Quick Start Guide

### Attach the Camera Strap

A strap is supplied with the camera; additional straps are available separately. Attach the strap securely to the two camera eyelets.



## Camera Manuals

The following manuals are available for your Nikon camera:

■ **The User's Manual**  
The *User's Manual* (this manual) describes basic shooting and playback.

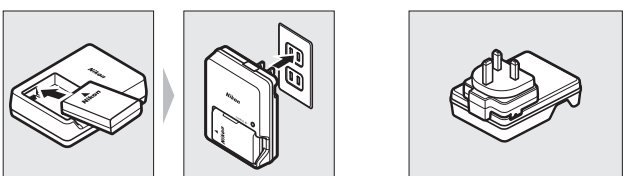
■ **Online Manuals**  
More detailed instructions are available on the Nikon website.

• To download manuals in pdf format, visit the Nikon Download Center.  
<http://downloadcenter.nikonimglib.com/en/products/471/D3500.html>

• To view manuals online in html format, visit:  
<http://onlinemanual.nikonimglib.com/d3500/en/>

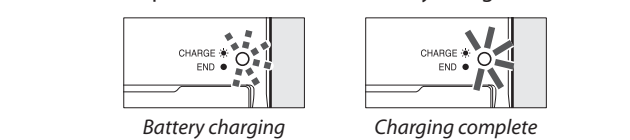


## Charge the Battery

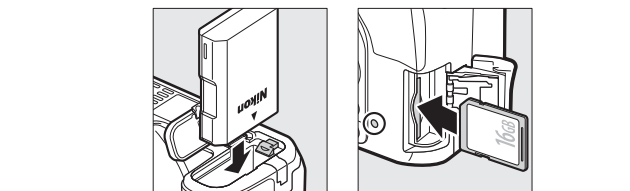


In some countries or regions, charger may be supplied with adapter connected.

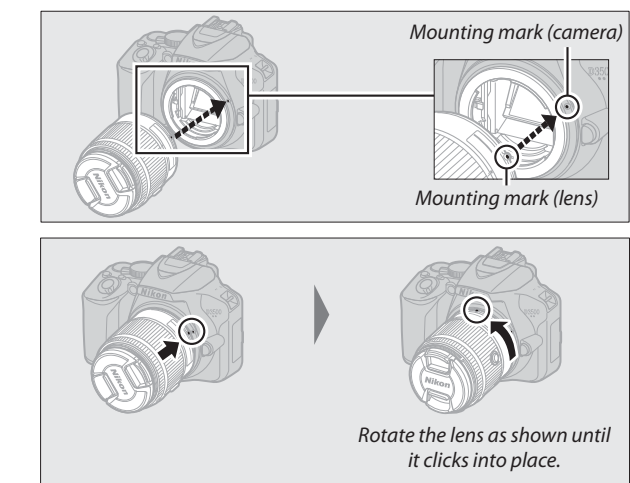
The CHARGE lamp will flash while the battery charges.



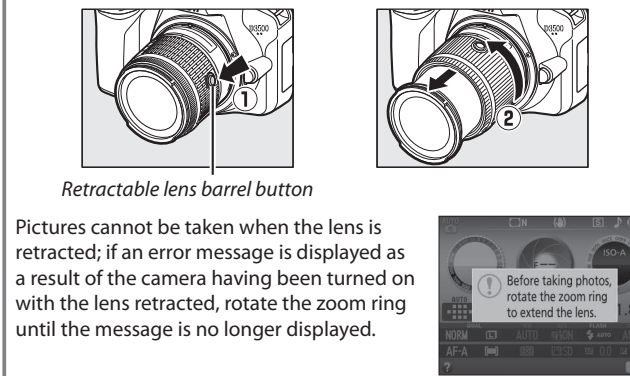
## Insert the Battery and a Memory Card



## Attach a Lens



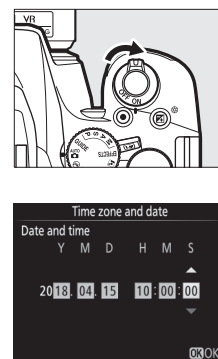
■ **Lenses with Retractable Lens Barrel Buttons**  
Before using the camera, unlock and extend the lens. Keeping the retractable lens barrel button pressed (1), rotate the zoom ring as shown (2).



■ **Removing Lenses**  
To remove the lens, turn the camera off and press and hold the lens-release button on the front of the camera while rotating the lens in the direction opposite that shown above.

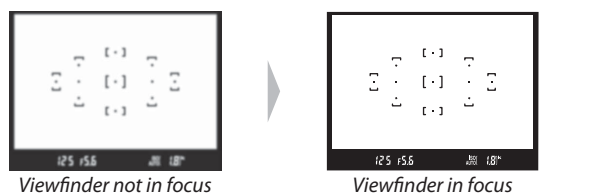
## Camera Setup

- Turn the camera on.**  
A language-selection dialog will be displayed; press and to highlight a language and press to select. The languages available vary with the country or region of sale.
- Set the camera clock.**  
After setting time zone, date format, and daylight saving time options, use the multi selector and button to set the camera clock.



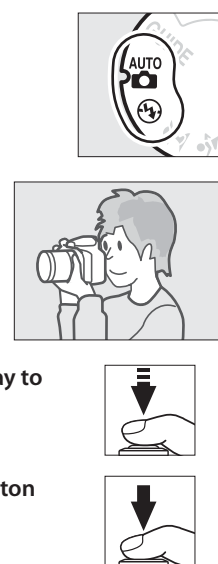
## Focus the Viewfinder

After removing the lens cap, rotate the diopter adjustment control until the focus points are in sharp focus. When operating the control with your eye to the viewfinder, be careful not to put your fingers or fingernails in your eye.



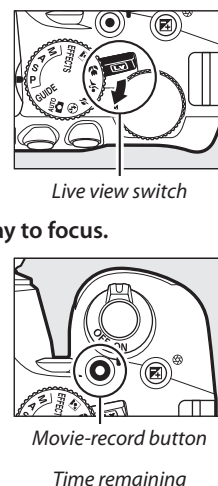
## C "Point-and-Shoot" Modes (AUTO and )

- Rotate the mode dial to or .
- Frame the photograph.
- Press the shutter-release button halfway to focus.
- Smoothly press the shutter-release button the rest of the way down to take the photograph.



## D Recording Movies

- Rotate the live view switch. The view through the lens will be displayed in the monitor.
- Press the shutter-release button halfway to focus.
- Press the movie-record button to start recording.



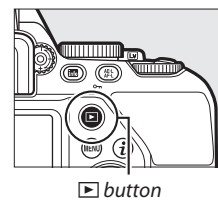
A recording indicator and the time available are displayed in the monitor.

- Press the movie-record button again to end recording.
- Rotate the live view switch to exit live view.

## E Viewing Photographs

Pressing displays a picture in the monitor.

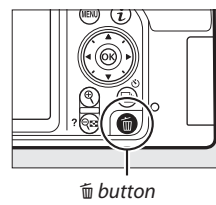
Movies are indicated by a icon. Press to start playback.



## F Deleting Unwanted Photographs

Note that photographs cannot be recovered once deleted.

- Press the button. A confirmation dialog will be displayed; press the button again to delete the image and return to playback.
- Exit without deleting the picture, press .



## G Camera Menus

Most shooting, playback, and setup options can be accessed from the camera menus. To view the menus, press the MENU button.

**Tab**  
Choose from the following menus:

- ▶ Playback
- ▶ Shooting
- ▶ Setup
- ▶ Retouch
- ▶ Recent Settings

**Slider shows position in current menu.**

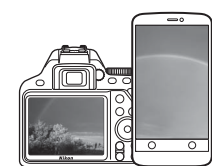
**Current settings are shown by icons.**

**Menu options**  
Options in current menu.

**Help icon**  
If the help icon is displayed, you can press the button to view help for the currently selected item.

## H Connecting to Smart Devices with SnapBridge

Install the SnapBridge app to your smart device to download pictures from the camera or control the camera remotely. For more information, see the online camera manual.



### Readying the Smart Device

Before connecting, ready your smart device by installing the SnapBridge app and enabling Bluetooth.

- Search for "snapbridge" on the Apple App Store® (iOS) or Google Play™ (Android™) and install the SnapBridge app.



Information on supported operating systems is available from the download site. This camera is not compatible with the SnapBridge 360/170 app.

- Enable Bluetooth on the smart device. Note that the actual connection to the camera will be made using the SnapBridge app; do not attempt to connect using the Settings app on your device.

### Pairing and Connecting

Before pairing, confirm that there is space available on the camera memory card. To prevent unexpected interruptions, you should also check that the camera battery is fully charged.

- Highlight **Connect to smart device** in the setup menu and press .
  - Follow the instructions displayed on the camera and in the SnapBridge app, to complete setup.
- See SnapBridge online help for detailed setup information (additional information is also available in the online camera manual). For information on SnapBridge online help, visit:  
<https://nikonimglib.com/snbr/onlinehelp/en/index.html>

## Caring for the Camera

■ **Storage**  
When the camera will not be used for an extended period, turn the camera off and remove the battery. Do not store in locations that:  
• are poorly ventilated or subject to humidities of over 60%  
• are next to equipment that produces strong electromagnetic fields, such as televisions or radios  
• are exposed to temperatures above 50 °C (122 °F) or below -10 °C (14 °F)

## Cleaning

**Camera Body**  
Use a blower to remove dust and lint, then wipe gently with a soft, dry cloth. After using the camera at the beach or seaside, wipe off sand or salt with a cloth lightly dampened in distilled water and dry thoroughly.  
**Important:** Dust or other foreign matter inside the camera may cause damage not covered under warranty.

**Lens, Mirror, and Viewfinder**  
These glass elements are easily damaged. Remove dust and lint with a blower. If using an aerosol blower, keep the can vertical to prevent the discharge of liquid. To remove fingerprints and other stains, apply a small amount of lens cleaner to a soft cloth and clean with care.

**Monitor**  
Remove dust and lint with a blower. When removing fingerprints and other stains, wipe the surface lightly with a soft cloth or chamois leather. Do not apply pressure, as this could result in damage or malfunction.  
\* Do not use alcohol, thinner, or other volatile chemicals.

## Troubleshooting

■ **Battery/Display**  
**The camera is on but does not respond:** Wait for recording to end. If the problem persists, turn the camera off. If the camera does not turn off, remove and reinsert the battery.  
**Viewfinder is out of focus:** Focus the viewfinder using the diopter adjustment control.

■ **Shooting (All Modes)**  
**Shutter-release disabled:**  
• Memory card is locked, full, or not inserted.  
• Camera is not in focus.

**Photos are out of focus:** The camera may be unable to focus on subjects that are low in contrast, dominated by regular geometric patterns, or dwarfed by objects in the background, or that include objects at different distances from the camera, areas of sharply contrasting brightness, or many fine details.

■ **Playback**  
**Cannot view pictures recorded with other cameras:** Pictures recorded with other makes of camera may not be display correctly.  
**Some pictures are not displayed during playback:** Select **All** for **Playback** folder.  
**Cannot delete picture:** Memory card is locked.

## Specifications

Nikon D3500 Digital Camera	
<b>Type</b>	Single-lens reflex digital camera
<b>Lens mount</b>	Nikon F mount (with AF contacts)
<b>Effective angle of view</b>	Nikon DX format; focal length equivalent to approx. 1.5x that of lenses with FX format angle of view
<b>Effective pixels</b>	
<b>Effective pixels</b>	24.2 million
<b>Image sensor</b>	
<b>Image sensor</b>	23.5 × 15.6 mm CMOS sensor
<b>Total pixels</b>	24.78 million
<b>Dust-reduction System</b>	Image Dust Off reference data (Capture NX-D software required)
<b>Storage</b>	
<b>Image size (pixels)</b>	• 6000 × 4000 (Large: 24.0 M) • 4496 × 3000 (Medium: 13.5 M) • 2992 × 2000 (Small: 6.0 M)
<b>File format</b>	• <b>NEF (RAW):</b> 12 bit, compressed • <b>JPEG:</b> JPEG-Baseline compliant with fine (approx. 1 : 4), normal (approx. 1 : 8), or basic (approx. 1 : 16) compression • <b>NEF (RAW)+JPEG:</b> Single photograph recorded in both NEF (RAW) and JPEG formats
<b>Picture Control System</b>	Standard, Neutral, Vivid, Monochrome, Portrait, Landscape, Flat; selected Picture Control can be modified
<b>Media</b>	SD (Secure Digital) and UHS-I compliant SDHC and SDXC memory cards
<b>File system</b>	DCF 2.0, Exif 2.3, PictBridge
<b>Viewfinder</b>	
<b>Viewfinder</b>	Eye-level pentamirror single-lens reflex viewfinder
<b>Frame coverage</b>	Approx. 95% horizontal and 95% vertical
<b>Magnification</b>	Approx. 0.85x (50 mm f/1.4 lens at infinity, -1.0 m <sup>-1</sup> )
<b>Eye point</b>	18 mm (-1.0 m <sup>-1</sup> ); from center surface of viewfinder eyepiece lens
<b>Diopter adjustment</b>	-1.7—+0.5 m <sup>-1</sup>
<b>Focusing screen</b>	Type B BriteView Clear Matte Mark VII screen
<b>Reflex mirror</b>	Quick return
<b>Lens aperture</b>	Instant return, electronically controlled
<b>Lens</b>	
<b>Autofocus support</b>	Autofocus is available with AF-P and type E and G AF-S lenses.
<b>Shutter</b>	
<b>Type</b>	Electronically-controlled vertical-travel focal-plane shutter
<b>Speed</b>	1/4000—30 s in steps of 1/3 EV; Bulb; Time
<b>Flash sync speed</b>	X = 1/200 s; synchronizes with shutter at 1/200 s or slower
<b>Release</b>	
<b>Release mode</b>	(single frame),  (continuous),  (quiet shutter release),  (self-timer)
<b>Frame advance rate</b>	Up to 5 fps <b>Note:</b> Frame rates assume manual focus, manual or shutter-priority auto exposure, a shutter speed of 1/250 s or faster, and other settings at default values.
<b>Self-timer</b>	2 s, 5 s, 10 s, 20 s; 1–9 exposures



