



D5600 Model Name: N1538

Nikon User Support for India and Australia
Contact a Nikon representative for technical assistance with the operation of your Nikon product or products.

About the Reference Manual
For more information on using your Nikon camera, download a pdf copy of the camera Reference Manual from the website listed below.

NIKON CORPORATION
© 2016 Nikon Corporation



Printed in Thailand
GMB36911-03

En

Nikon Manual Viewer 2
Install the Nikon Manual Viewer 2 app on your smartphone or tablet to view Nikon digital camera manuals, anytime, anywhere.

- Read this manual thoroughly before using the camera.
To ensure proper use of the camera, be sure to read "For Your Safety" (overleaf).

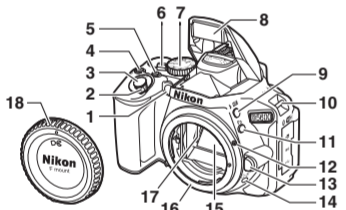
No reproduction in any form of this manual, in whole or in part (except for brief quotation in critical articles or reviews), may be made without written authorization from NIKON CORPORATION.

Package Contents

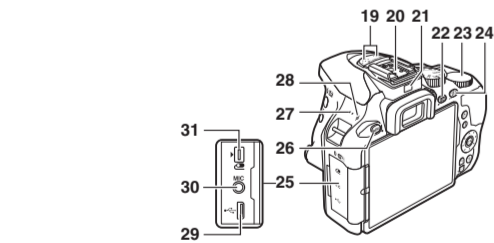
- D5600 camera
DK-25 rubber eyecup (comes attached to camera)
BF-1B body cap
EN-EL14a rechargeable Li-ion battery (with terminal cover)
MH-24 battery charger (plug adapter supplied in countries or regions where required; shape depends on country of sale)

Purchasers of the lens kit option should confirm that the package also includes a lens. Memory cards are sold separately.

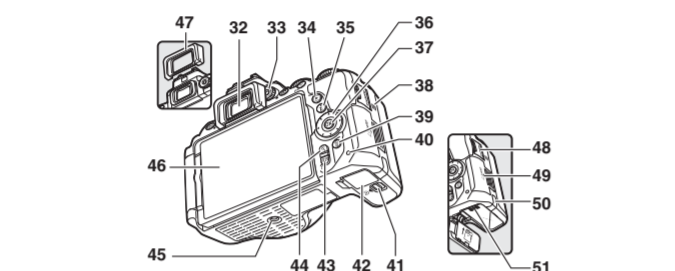
A The Camera Body



- 1 AF-assist illuminator
2 Self-timer lamp
3 Red-eye reduction lamp
4 Power switch
5 Shutter-release button
6 AF button
7 Movie-record button
8 Live view switch
9 Mode dial
10 Built-in flash
11 Fn button
12 Mounting mark
13 Lens release button
14 Lock button
15 Mirror
16 Lens mount
17 CPU contacts
18 Body cap



- 19 Stereo microphone
20 Accessory shoe (for optional flash units)
21 Eye sensor
22 Information button
23 Command dial
24 On/OFF button
25 Connector cover
26 MENU button
27 Speaker
28 Focal plane mark
29 USB connector
30 Connector for external microphone
31 Accessory terminal

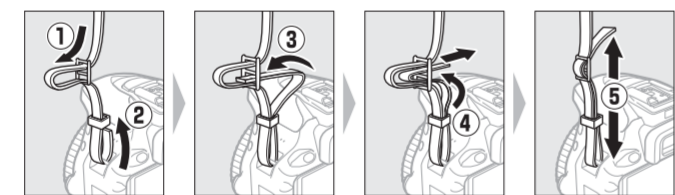


- 32 Viewfinder eyepiece
33 Diopter adjustment control
34 Lock button
35 AF button
36 Multi selector
37 OK button
38 N-Mark (NFC antenna)
39 Lock button
40 Memory card access lamp
41 Battery-chamber cover latch
42 Battery-chamber cover
43 On/OFF button
44 Fn button
45 Tripod socket
46 Touch-sensitive vari-angle monitor
47 Rubber eyecup
48 HDMI connector cover
49 Memory card slot cover
50 Power connector cover for optional power connector
51 Battery latch

Multi Selector
In this manual, operations using the multi selector are represented by icons.
Press the multi selector up, down, left, or right.

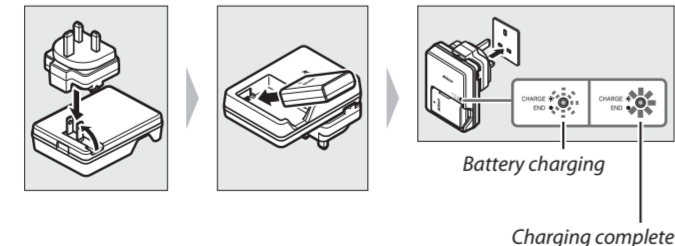
B Quick Start Guide

Attach the Camera Strap

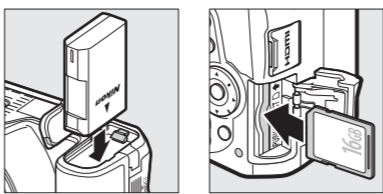


Charge the Battery

If a plug adapter is supplied, raise the wall plug and connect the plug adapter as shown below at left, making sure the plug is fully inserted.

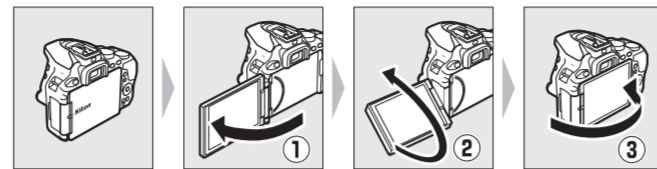


Insert the Battery and a Memory Card

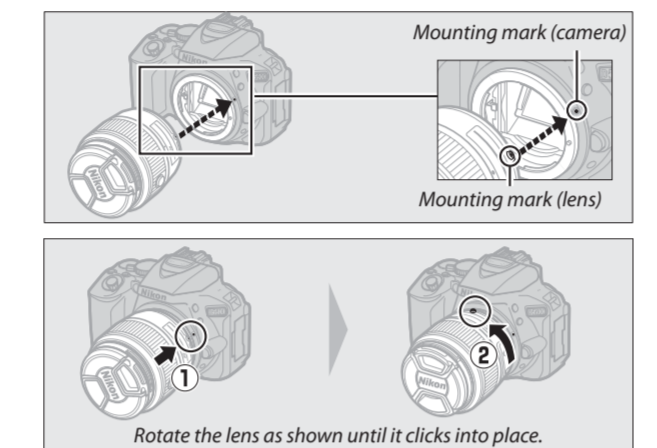


Open the Monitor

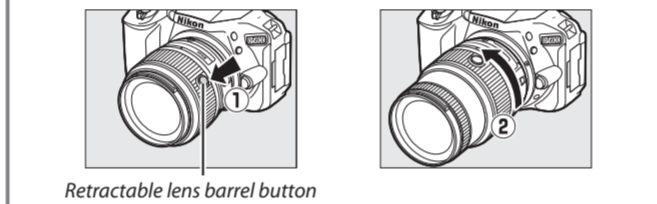
Open the monitor as shown. Do not use force.



Attach a Lens



Lenses with Retractable Lens Barrel Buttons
Before using the camera, unlock and extend the lens.



Pictures cannot be taken when the lens is retracted; if an error message is displayed as a result of the camera having been turned on with the lens retracted, rotate the zoom ring until the message is no longer displayed.

Removing Lenses
To remove the lens, turn the camera off and press and hold the lens-release button on the front of the camera while rotating the lens in the direction opposite that shown above.

Camera Setup

Setup from a Smartphone or Tablet
Smart device: Download and install the SnapBridge app. The app is available free from the Nikon website.

Camera: Turn the camera on. A language-selection dialog will be displayed; press the left and right arrows to highlight a language and press the OK button to select.

Camera: When the dialog at right is displayed, press the OK button. If the dialog at right is not displayed or if you wish to configure the camera again, highlight Connect to smart device in the setup menu and press the OK button.

Camera/smart device: Start pairing.
Android devices with NFC support: After checking that NFC is enabled on the smart device, touch the camera's N-Mark to the NFC antenna on the smart device to launch the SnapBridge app.

Camera: Confirm that the camera displays the message shown at right and ready the smart device.

Smart device: Launch the SnapBridge app and tap Pair with camera. If prompted to choose a camera, tap the camera name.

Smart device: Tap the camera name in the "Pair with camera" dialog. Users who are pairing a camera with an iOS device for the first time will first be presented with pairing instructions; after reading the instructions, scroll to the bottom of the display and tap Understood.

Camera/smart device: Confirm that the camera and smart device display the same six-digit number. Some versions of iOS may not display a number; if no number displayed, proceed to Step 9.

Camera/smart device: Press the OK button on the camera and tap PAIR on the smart device.

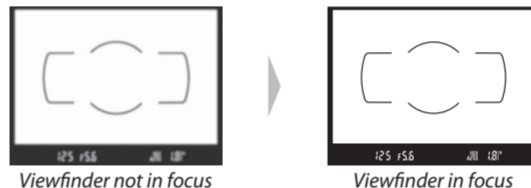
Follow the on-screen instructions. Follow the instructions displayed by the camera and smart device to complete the setup process.

Setup from the Camera Menus
Turn the camera on. A language-selection dialog will be displayed; press the left and right arrows to highlight a language and press the OK button to select.

Press MENU and set the camera clock. After setting time zone, date format, and daylight saving time options, use the multi selector and the OK button to set the camera clock.

Focus the Viewfinder

After removing the lens cap, rotate the diopter adjustment control until the AF area brackets are in sharp focus. When operating the control with your eye to the viewfinder, be careful not to put your fingers or fingernails in your eye.



"Point-and-Shoot" Modes (AUTO and P)

Rotate the mode dial to AUTO or P.

Frame the photograph.

Press the shutter-release button halfway to focus.

Smoothly press the shutter-release button the rest of the way down to take the photograph.

D Viewing Photographs

Pressing the INFO button displays a picture in the monitor.

E Deleting Unwanted Photographs

Note that photographs cannot be recovered once deleted. Press the INFO button. A confirmation dialog will be displayed; press the left and right arrows to delete the image and return to playback.

F Recording Movies

Rotate the live view switch. The view through the lens will be displayed in the monitor.

Press the shutter-release button halfway to focus.

Press the movie-record button to start recording.

A recording indicator and the time available are displayed in the monitor.

Press the movie-record button again to end recording. Rotate the live view switch to exit live view.

G Camera Menus

Most shooting, playback, and setup options can be accessed from the camera menus. To view the menus, press the MENU button.

Menu options
Options in current menu.
Slider shows position in current menu.
Current settings are shown by icons.

Help icon
If the help icon is displayed, you can press the help icon button to view help for the currently selected item.

- Choose from the following menus:
Playback
Shooting
Custom Settings
Setup
Retouch
Recent Settings / My Menu

Caring for the Camera

Storage
When the camera will not be used for an extended period, turn the camera off and remove the battery. Do not store in locations that: are poorly ventilated or subject to humidities of over 60%.

Cleaning
Camera Body
Use a blower to remove dust and lint, then wipe gently with a soft, dry cloth. After using the camera at the beach or seaside, wipe off sand or salt with a cloth lightly dampened in distilled water and dry thoroughly.

Lens, Mirror, and Viewfinder
These glass elements are easily damaged. Remove dust and lint with a blower. If using an aerosol blower, keep the can vertical to prevent the discharge of liquid.

Monitor
Remove dust and lint with a blower. When removing fingerprints and other stains, wipe the surface lightly with a soft cloth or chamois leather. Do not apply pressure, as this could result in damage or malfunction.

Troubleshooting

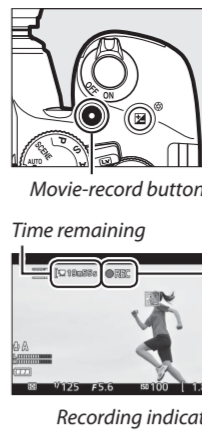
Battery/Display
The camera is on but does not respond: Wait for recording to end. If the problem persists, turn the camera off. If the camera does not turn off, remove and reinsert the battery or, if you are using an AC adapter, disconnect and reconnect the AC adapter.

Viewfinder is dark: Insert a fully-charged battery. Displays turn off without warning: Choose longer delays for Custom Setting c2 (Auto off timers).

Viewfinder display is unresponsive and dim: The response times and brightness of this display vary with temperature.

Fine lines are visible around active focus point or display turns red when focus point is highlighted: These phenomena are normal for this type of viewfinder and do not indicate a malfunction.

Shooting (All Modes)
Camera takes time to turn on: Delete files or folders.



Specifications table for Nikon D5600 Digital Camera, including details on Type, Lens mount, Effective angle of view, Effective pixels, Image sensor, Total pixels, Dust-reduction System, Storage, File format, Picture Control System, Media, File system, Viewfinder, Frame coverage, Magnification, Eyepoint, Diopter adjustment, Focusing screen, Reflex mirror, Lens aperture, Autofocus support, Shutter, Type, Speed, Flash sync speed, Release, Release mode, Frame advance rate, Self-timer, Exposure, Metering mode, Metering method, Range, Exposure meter coupling, Mode, Exposure compensation, Exposure lock, ISO sensitivity, Exposure Index, Active D-Lighting.

