

DIGITAL CAMERA

COOLPIX A10

Quick Start Guide

NIKON CORPORATION

Thank you for purchasing the Nikon COOLPIX A10 digital camera.

Before using the camera, please thoroughly read "Confirming the Package Contents" and "For Your Safety" on the reverse side for correct use of the camera. After reading, please keep this manual handy and refer to it to enhance your enjoyment of your new camera.

The *Quick Start Guide* introduces the procedures necessary in using this camera for the first time. For more detailed information, please download the "Reference Manual" from the following URL: <http://downloadcenter.nikonimglib.com>

The *Reference Manual* can be viewed using Adobe Reader, available for free download from the Adobe website.

About This Manual

- SD, SDHC, and SDXC memory cards are referred to as "memory cards" in this manual.
- In this manual, images are sometimes omitted from monitor display samples so that monitor indicators can be more clearly shown.
- Illustrations and monitor content shown in this manual may differ from the actual product.
- For advanced use of the camera, read the *Reference Manual* (in pdf format) which is available in many languages including Hindi, Bengali, Tamil, Marathi and Telugu. See the reverse side for information to download the file.

Printed in China
CT8E02(11)
6MN64911-02

Preparing for Shooting

Insert the Batteries and Memory Card

- Open the battery-chamber/memory card slot cover.
 - Hold the camera upside down to prevent the batteries from falling out.
- Insert the batteries and memory card.
 - Confirm that the positive (+) and negative (-) battery terminals are oriented correctly and insert the batteries.
 - Confirm the correct orientation and slide the memory card in until it clicks into place.
- Close the battery-chamber/memory card slot cover.

Applicable Batteries

- Two LR6/LR40 (AA-size) alkaline batteries*
- Two FR6/LR1 (AA-size) lithium batteries
- Two EN-MH2 rechargeable Ni-MH (nickel metal hydride) batteries
- * Performance of alkaline batteries may vary greatly depending on the brand.

Removing the Memory Card

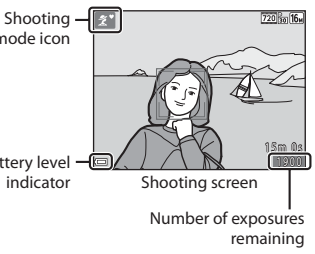
- Turn the camera off and make sure that the power-on lamp and the monitor have turned off, and then open the battery-chamber/memory card slot cover.
- Gently push the memory card into the camera (1) to partially eject the card (2).
 - The camera, batteries, and memory card may be hot immediately after using the camera.

Turn the Camera On and Set the Display Language, Date, and Time

- Press the power switch to turn on the camera.
 - The monitor turns on when the camera is turned on.
 - To turn the camera off, press the power switch again.
- Use the multi selector **▲▼** to select the desired language and press the **OK** button.
- Use **▲▼** to select **Yes** and press the **OK** button.
- Use **◀▶** to select your home time zone and press the **OK** button.
 - Press **▲** to turn on daylight saving time (☀ is displayed above the map).
 - Press **▼** to turn it off.
- Use **▲▼** to select the date format and press the **OK** button.

- Set the date and time, and press the **OK** button.
 - Use **◀▶** to select a field and then use **▲▼** to set the date and time.
 - Select the minute field and press the **OK** button to confirm the setting.
- When the confirmation screen is displayed, use **▲▼** to select **Yes** and press the **OK** button.
- Press the **Q** (shooting mode) button.
- Use **▲▼** to select **Scene auto selector** and press the **OK** button.

- The camera enters the shooting mode and you can take images in Scene auto selector mode.
- While shooting, you can check the battery level indicator and the number of exposures remaining.



Using the Camera

Shooting with Scene Auto Selector Mode

- Hold the camera steady.
 - Keep fingers and other objects away from the lens, flash, microphone, and speaker.
- Frame the picture.
 - Move the zoom control to change the zoom position.
 - When the camera automatically determines the scene mode, the shooting mode icon changes.
- Press the shutter-release button halfway.
 - When the subject is in focus, the focus area glows green.
 - If the focus area or focus indicator flashes, the camera is unable to focus. Modify the composition and try pressing the shutter-release button halfway again.
- Without lifting your finger, press the shutter-release button the rest of the way down.
 - The indicator showing the number of exposures remaining or the indicator showing the maximum movie length flashes while images are being saved or while a movie is being recorded. **Do not open the battery-chamber/memory card slot cover or remove the batteries or memory card** while an indicator is flashing. Doing this could result in loss of data, or in damage to the camera or the memory card.

Play Back Images

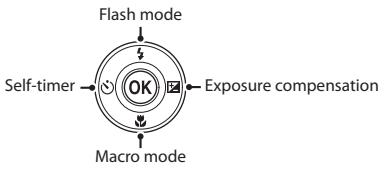
- Press the **▶** (playback) button to enter playback mode.
- Use the multi selector **▲▼◀▶** to select an image to display.
 - To return to shooting mode, press the **Q** button or shutter-release button.
 - When **OK: 1/2** is displayed in full-frame playback mode, you can press the **OK** button to apply an effect to the image.
 - Move the zoom control toward **T** (Q) in full-frame playback mode to zoom in on the image.
 - Move the zoom control toward **W** (X) in full-frame playback mode to display a list of images called "thumbnails."

Delete Images

- Press the **🗑** (delete) button to delete the image currently displayed in the monitor.
- Use the multi selector **▲▼** to select **Current image** and press the **OK** button.
 - To exit without deleting, press the **MENU** button.
- Select **Yes** and press the **OK** button.
 - Deleted images cannot be recovered.

Using the Flash and Self-timer

You can use the multi selector to set frequently used functions such as the flash and self-timer. You can set the following functions using **▲▼◀▶** in the shooting screen.



- Flash mode**
You can select the flash mode to match the shooting conditions.
- Self-timer**
If you select **ON**, the camera releases the shutter 10 seconds after you press the shutter-release button.
- Macro mode**
Use macro mode when taking close-up images.
- Exposure compensation**
You can adjust overall image brightness.

The functions that are available vary with the shooting mode.

Shooting Features

Changing the Shooting Mode

The following shooting modes are available.

- Scene auto selector**
The camera automatically selects the optimum scene mode when you frame an image, making it even easier to take images using settings that suit the scene.
- Scene mode**
Camera settings are optimized according to the scene that you select.
- SE Special effects**
Effects can be applied to images during shooting.
- Smart portrait**
When the camera detects a smiling face, you can take an image automatically without pressing the shutter-release button (smile timer). You can also use the skin softening option to smoothen the skin tones of human faces.
- Auto mode**
Used for general shooting. Settings can be adjusted to suit the shooting conditions and the type of shot you want to capture.

- Press the **Q** (shooting mode) button in the shooting screen.
- Use the multi selector **▲▼** to select a shooting mode and press the **OK** button.

Recording and Playing Back Movies

- Display the shooting screen.
 - Check the remaining amount of movie recording time.
- Press the **●** (movie-record) button to start movie recording.
- Press the **●** (movie-record) button again to stop recording.
- Select a movie in full-frame playback mode and press the **OK** button.
 - Movies are indicated by the movie options icon.

Using the Menus

Use the multi selector and **OK** button to navigate the menus. The following menus are available.

- Shooting menu**
Available by pressing the **MENU** button in the shooting screen. Allows you to change image size and quality, continuous shooting settings, etc.
 - Playback menu**
Available by pressing the **MENU** button when viewing images in full-frame playback mode or thumbnail playback mode. Allows you to edit images, play slide shows, etc.
 - Movie menu**
Available by pressing the **MENU** button in the shooting screen. Allows you to change movie recording settings.
 - Setup menu**
Allows you to adjust basic camera functions such as date and time, display language, etc.
- Press the **MENU** (menu) button.
 - The menu is displayed.
 - Press the multi selector **◀**.
 - The current menu icon is displayed in yellow.

- Use **▲▼** to select the desired menu icon.
 - The menu is changed.
- Press the **OK** button.
 - The menu options become selectable.
- Use **▲▼** to select a menu option, and then press the **OK** button.
 - The settings for the option you selected are displayed.
- Use **▲▼** to select the setting, and then press the **OK** button.
 - The setting you selected is applied.
 - When you are finished using the menu, press the **MENU** button.

- Certain menu options cannot be set depending on the current shooting mode or the state of the camera.
- When a menu is displayed, you can switch to shooting mode by pressing the shutter-release button, **Q** (shooting mode) button, or **●** (movie-record) button.

Transferring Images to a Computer (ViewNX-i)

Installing ViewNX-i

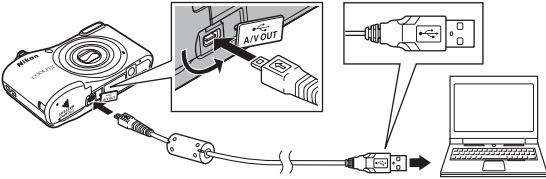
ViewNX-i is free software that enables you to transfer images and movies to your computer for viewing and editing.

To install ViewNX-i, download the latest version of the ViewNX-i installer from the following website and follow the on-screen instructions to complete installation. ViewNX-i: <http://downloadcenter.nikonimglib.com>

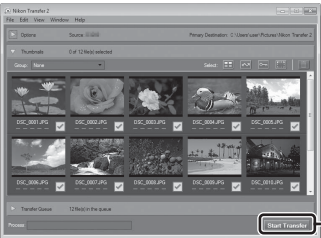
For system requirements and other information, see the Nikon website for your region.

Transferring Images to a Computer

- Prepare a memory card that contains images.
You can use any of the methods below to transfer images from the memory card to a computer.
 - SD memory card slot/card reader:** Insert the memory card into the card slot of your computer or the card reader (commercially available) that is connected to the computer.
 - Direct USB connection:** Turn the camera off and ensure that the memory card is inserted in the camera. Connect the camera to the computer using the USB cable. Turn the camera on.



- After Nikon Transfer 2 starts, click **Start Transfer**.



- Image transfer begins. When image transfer is complete, ViewNX-i starts and the transferred images are displayed.
- Consult online help for more information on using ViewNX-i.

- Terminate the connection.

- If you are using a card reader or card slot, choose the appropriate option in the computer operating system to eject the removable disk corresponding to the memory card and then remove the memory card from the card reader or card slot.
- If the camera is connected to the computer, turn the camera off and disconnect the USB cable.

Troubleshooting

If the camera fails to function as expected, check the list of common problems below before consulting your retailer or Nikon-authorized service representative.

The camera is on but does not respond.

Wait for recording to end.

If the problem persists, turn the camera off.

If the camera does not turn off, remove and reinsert the battery or batteries or, if you are using an AC adapter, disconnect and reconnect the AC adapter. Note that although any data currently being recorded will be lost, data that have already been recorded will not be affected by removing or disconnecting the power source.

Camera turns off without warning.

- The camera automatically turns off to save power (auto off function).
- The camera or batteries have become too cold and cannot operate properly.
- The inside of the camera has become hot. Leave the camera off until the inside of the camera has cooled, and then try turning it on again.

Monitor is blank.


- The camera is off.
- The batteries are exhausted.
- The camera has entered standby mode to save power. Press the power switch, shutter-release button, **Q** button, **▶** button, or **●** (movie-record) button.

Camera becomes hot.


The camera may become hot when used for an extended period of time to shoot movies or when used in a hot environment; this is not a malfunction.

Confirming the Package Contents

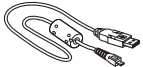
In the event that any items are missing, please contact the store where you purchased the camera.



COOLPIX A10 Digital Camera



Camera Strap

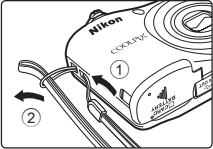


USB Cable UC-E16

- Quick Start Guide (this manual)
- Warranty

- A memory card is not included with the camera.

Attaching the Camera Strap



Reference Manual in Indian Languages

संदर्भ मैनुअल को हिंदी में डाउनलोड करने के लिए नीचे दी गई Nikon वेबसाइट पर जाएँ।

অনুব্রহ্ম করে বাংলায় (সফরেশ গুস্তিকা ডাউনলোড করতে নিচে Nikon ওয়েবসাইটে যান।

தமிழில் சரிபார்ப்புக் கையேட்டைப் பதிவிறக்குவதற்கு, தயவுசெய்து கீழுள்ள Nikon வலைத்தளத்துக்குச் செல்லவும்.

मराठीत संदर्भ सूचना-पुस्तिका डाउनलोड करण्यासाठी कृपया खालील Nikon वेबसाईटला भेट द्या.

తెలుగులో అన్వయ మార్గదర్శక పుస్తకం డౌన్లోడ్ చేసుకునేందుకు దయచేసి Nikon వెబ్సైట్ సందర్శించండి.

<http://downloadcenter.nikonimglib.com>

Information and Precautions

Nikon User Support
If you need any technical assistance with the operation of your Nikon product(s), please contact one of the Nikon representatives. For information on the Nikon representatives in your area, please visit <http://www.nikon-asia.com/support>.

Life-Long Learning
As part of Nikon's "Life-Long Learning" commitment to ongoing product support and education, continually updated information is available online at the following sites:

- For users in the U.S.A.: <http://www.nikonusa.com/>
- For users in Europe: <http://www.europe-nikon.com/support/>
- For users in Asia, Oceania, the Middle East, and Africa: <http://www.nikon-asia.com/>

Visit these sites to keep up-to-date with the latest product information, tips, answers to frequently asked questions (FAQs), and general advice on digital imaging and photography. Additional information may be available from the Nikon representative in your area. Visit the site below for contact information:

<http://imaging.nikon.com/>

Use Only Nikon Brand Electronic Accessories
Nikon COOLPIX cameras are designed to the highest standards and include complex electronic circuitry. Only Nikon brand electronic accessories (including battery chargers, batteries, AC adapters, and cables) certified by Nikon specifically for use with this Nikon digital camera are engineered and proven to operate within the operational and safety requirements of this electronic circuitry.

THE USE OF NON-NIKON ELECTRONIC ACCESSORIES COULD DAMAGE THE CAMERA AND MAY VOID YOUR NIKON WARRANTY.

For more information about Nikon brand accessories, contact a local authorized Nikon dealer.

Before Taking Important Pictures
Before taking pictures on important occasions (such as at weddings or before taking the camera on a trip), take a test shot to ensure that the camera is functioning normally. Nikon will not be held liable for damages or lost profits that may result from product malfunction.


Information and Precautions

Disposing of Data Storage Devices
Please note that deleting images or formatting data storage devices such as memory cards or built-in camera memory does not completely erase the original image data. Deleted files can sometimes be recovered from discarded storage devices using commercially available software, potentially resulting in the malicious use of personal image data. Ensuring the privacy of such data is the user's responsibility.

Before discarding a data storage device or transferring ownership to another person, erase all data using commercial deletion software, or format the device and then completely refill it with images containing no private information (for example, pictures of empty sky). Care should be taken to avoid injury or damage to property when physically destroying data storage devices.

For Your Safety

To prevent damage to your Nikon product or injury to yourself or to others, read the following safety precautions in their entirety before using this equipment. Keep these safety instructions where all those who use the product will read them.



This icon marks warnings, information that should be read before using this Nikon product, to prevent possible injury.

WARNINGS

- Turn off in the event of malfunction**
Should you notice smoke or an unusual smell coming from the camera or AC adapter, unplug the AC adapter and remove the batteries immediately, taking care to avoid burns. Continued operation could result in injury. After removing or disconnecting the power source, take the equipment to a Nikon-authorized service representative for inspection.
- Do not disassemble**
Touching the internal parts of the camera or AC adapter could result in injury. Repairs should be performed only by qualified technicians. Should the camera or AC adapter break open as the result of a fall or other accident, take the product to a Nikon-authorized service representative for inspection, after unplugging the product and/or removing the batteries.
- Do not use the camera or AC adapter in the presence of flammable gas**
Do not use electronic equipment in the presence of flammable gas, as this could result in explosion or fire.
- Handle the camera strap with care**
Never place the strap around the neck of an infant or child.
- Keep out of reach of children**
Particular care should be taken to prevent infants from putting the batteries or other small parts into their mouths.
- Do not remain in contact with the camera, battery charger, or AC adapter for extended periods while the devices are on or in use**
Parts of the devices become hot. Leaving the devices in direct contact with the skin for extended periods may result in low-temperature burns.

- Do not leave the product where it will be exposed to extremely high temperatures, such as in an enclosed automobile or in direct sunlight**
Failure to observe this precaution could cause damage or fire.
- Observe caution when handling batteries**
Batteries may leak or explode if improperly handled. Observe the following precautions when handling batteries for use in this product:
 - Before replacing the batteries, turn the product off. If you are using an AC adapter, be sure it is unplugged.
 - Use only the batteries approved for use in this product. Do not combine old and new batteries or batteries of different makes or types.
 - If Nikon rechargeable Ni-MH batteries EN-MH2 (EN-MH2-B2 or EN-MH2-B4) are purchased separately, charge and use each of them as a set. Do not combine batteries from different pairs.
 - The EN-MH2 rechargeable batteries are for use with Nikon digital cameras only, and are compatible with COOLPIX A10.
 - Insert batteries in the correct orientation.
 - Do not short or disassemble batteries or attempt to remove or break battery insulation or casing.
 - Do not expose batteries to flame or to excessive heat.
 - Do not immerse in or expose to water.
 - Do not transport or store with metal objects such as necklaces or hairpins.
 - Batteries are prone to leakage when fully discharged. To avoid damage to the product, be sure to remove the batteries when no charge remains.
 - Discontinue use immediately should you notice any change in the batteries, such as discoloration or deformation.
 - If liquid from damaged batteries comes in contact with clothing or skin, rinse immediately with plenty of water.

- Observe the following precautions when handling the Battery Chargers (available separately)**
 - Keep dry. Failure to observe this precaution could result in fire or electric shock.
 - Dust on or near the metal parts of the plug should be removed with a dry cloth. Continued use could result in fire.
 - Do not handle the power cable or go near the battery charger during lightning storms. Failure to observe this precaution could result in electric shock.
 - Do not damage, modify, forcibly tug or bend the power cable, place it under heavy objects, or expose it to heat or flame. Should the insulation be damaged and the wires become exposed, take it to a Nikon-authorized service representative for inspection. Failure to observe these precautions could result in fire or electric shock.
 - Do not handle the plug or battery charger with wet hands. Failure to observe this precaution could result in electric shock.
 - Do not use with travel converters or adapters designed to convert from one voltage to another or with DC-to-AC inverters. Failure to observe this precaution could damage the product or result in overheating or fire.
- Use appropriate cables**
When connecting cables to the input and output jacks, use only the cables provided or sold by Nikon for the purpose, to maintain compliance with product regulations.
- Do not touch the moving parts of the lens**
Failure to observe this precaution could result in injury.
- Handle moving parts with care**
Be careful that your fingers or other objects are not pinched by the lens cover or other moving parts.
- Observe caution when using the flash**
Using the flash close to your subject's eyes could cause temporary visual impairment. The flash should be no less than 1 m (3 ft 4 in.) from the subject. Particular care should be observed when photographing infants.
- Do not operate the flash with the flash window touching a person or object**
Failure to observe this precaution could result in burns or fire.
- Avoid contact with liquid crystal**
Should the monitor break, care should be taken to avoid injury caused by broken glass and to prevent liquid crystal from the monitor touching the skin or entering the eyes or mouth.
- Follow the instructions of airline and hospital personnel**

Notices

Notice for Customers in the U.S.A.

Federal Communications Commission (FCC) Radio Frequency Interference Statement
This equipment has been tested and found to comply with the limits for a Class B digital device, pursuant to Part 15 of the FCC rules. These limits are designed to provide reasonable protection against harmful interference in a residential installation. This equipment generates, uses, and can radiate radio frequency energy and, if not installed and used in accordance with the instructions, may cause harmful interference to radio communications. However, there is no guarantee that interference will not occur in a particular installation. If this equipment does cause harmful interference to radio or television reception, which can be determined by turning the equipment off and on, the user is encouraged to try to correct the interference by one or more of the following measures:

- Reorient or relocate the receiving antenna.
- Increase the separation between the equipment and receiver.
- Connect the equipment into an outlet on a circuit different from that to which the receiver is connected.
- Consult the dealer or an experienced radio/television technician for help.



CAUTIONS

Modifications
The FCC requires the user to be notified that any changes or modifications made to this device that are not expressly approved by Nikon Corporation may void the user's authority to operate the equipment.

Interface Cables
Use the interface cables sold or provided by Nikon for your equipment. Using other interface cables may exceed the limits of Class B Part 15 of the FCC rules.

Notice for Customers in the State of California

WARNING
Handling the cord on this product will expose you to lead, a chemical known to the State of California to cause birth defects or other reproductive harm.

Wash hands after handling.

Nikon Inc.,
1300 Walt Whitman Road Melville, New York 11747-3064 USA
Tel: 631-547-4200

Notice for Customers in Canada
CAN ICES-3 B / NMB-3 B

Notice for Customers in Europe
This symbol indicates that electrical and electronic equipment is to be collected separately.

The following apply only to users in European countries:

- This product is designated for separate collection at an appropriate collection point. Do not dispose of as household waste.
- Separate collection and recycling helps conserve natural resources and prevent negative consequences for human health and the environment that might result from incorrect disposal.
- For more information, contact the retailer or the local authorities in charge of waste management.

This symbol on the batteries indicates that the batteries are to be collected separately. The following apply only to users in European countries:

- All batteries, whether marked with this symbol or not, are designated for separate collection at an appropriate collection point. Do not dispose of as household waste.
- For more information, contact the retailer or the local authorities in charge of waste management.

Trademark Information

- Windows is either a registered trademark or trademark of Microsoft Corporation in the United States and/or other countries.
- Mac is a trademark or registered trademark of Apple Inc. in the U.S. and other countries.
- Adobe, the Adobe logo, and Reader are either trademarks or registered trademarks of Adobe Systems Incorporated in the United States and/or other countries.
- SDXC, SDHC and SD Logos are trademarks of SD-3C, LLC.



- PictBridge is a trademark.
- All other trade names mentioned in this manual or the other documentation provided with your Nikon product are trademarks or registered trademarks of their respective holders.

FreeType License (FreeType2)
• Portions of this software are copyright © 2012 The FreeType Project (<http://www.freetype.org>). All rights reserved.

MIT License (HarfBuzz)
• Portions of this software are copyright © 2016 The HarfBuzz Project (<http://www.freedesktop.org/wiki/Software/HarfBuzz>). All rights reserved.

Caring for the Product

The Camera

- Do Not Drop**
The product may malfunction if subjected to strong shock or vibration.
- Keep away from Strong Magnetic Fields**
Do not use or store this device in the vicinity of equipment that generates strong electromagnetic radiation or magnetic fields. Strong static charge or the magnetic fields produced by equipment such as radio transmitters could interfere with the monitor, damage data saved on the memory card, or affect the product's internal circuitry.
- Notes About the Monitor**
 - Monitors and electronic viewfinders are constructed with extremely high precision; at least 99.99% of pixels are effective, with no more than 0.01% being missing or defective. Hence while these displays may contain pixels that are always lit (white, red, blue, or green) or always off (black), this is not a malfunction and has no effect on images recorded with the device.
 - Images in the monitor may be difficult to see under bright lighting.
 - The monitor is lit by an LED backlight. Should the monitor begin to dim or flicker, contact your Nikon-authorized service representative.

Memory Cards

Formatting Memory Cards
The first time you insert a memory card that has been used in another device into this camera, make sure to format it with this camera. Insert the card into the camera, press the **MENU** button, and select **Format card** in the setup menu.

Applicable Memory Cards

The camera supports SD, SDHC, and SDXC memory cards (128 GB or less).

- Memory cards with an SD Speed Class rating of 6 or faster are recommended for recording movies. When using a slower memory card, movie recording may stop unexpectedly.
- If you use a card reader, make sure that it is compatible with your memory card.
- Contact the manufacturer for details on memory card features, operation, and performance guarantees.